

Cognition and Behavior

# Personalized Connectome-Based Modeling in Patients with Semi-Acute Phase TBI: Relationship to Acute Neuroimaging and 6 Month Follow-Up

Tyler Good,<sup>1,2</sup>  Michael Schirner,<sup>3,4,5,6</sup> Kelly Shen,<sup>1</sup> Petra Ritter,<sup>3,4,5,6</sup> Pratik Mukherjee,<sup>7,8,9,10</sup>  Brian Levine,<sup>1,2</sup> and  Anthony Randal McIntosh<sup>1,2</sup>

<https://doi.org/10.1523/ENEURO.0075-21.2022>

<sup>1</sup>Rotman Research Institute, Baycrest Health Sciences, Toronto, Ontario M6A 2E1, Canada, <sup>2</sup>University of Toronto, Toronto, Ontario M5S 1A1, Canada, <sup>3</sup>Department of Neurology, Charité—Universitätsmedizin Berlin, corporate member of Freie Universität Berlin, and Humboldt-Universität zu Berlin, 10117 Berlin, Germany, <sup>4</sup>Berlin Institute of Health, Charité—Universitätsmedizin Berlin, 10178 Berlin, Germany, <sup>5</sup>Bernstein Center for Computational Neuroscience, Bernstein Focus State Dependencies of Learning, 10115 Berlin, Germany, <sup>6</sup>Einstein Center for Neurosciences Berlin, D-10117 Berlin, Germany, <sup>7</sup>Einstein Center Digital Future, 10117 Berlin, Germany, <sup>8</sup>Department of Radiology & Biomedical Imaging, University of California, San Francisco, San Francisco, California 94143-0628, <sup>9</sup>Brain and Spinal Cord Injury Center, Zuckerberg San Francisco General Hospital and Trauma Center, San Francisco, California 94143-0350, and <sup>10</sup>Department of Bioengineering and Therapeutic Sciences, University of California, San Francisco, San Francisco, California 94158

## Abstract

Following traumatic brain injury (TBI), cognitive impairments manifest through interactions between microscopic and macroscopic changes. On the microscale, a neurometabolic cascade alters neurotransmission, while on the macroscale diffuse axonal injury impacts the integrity of long-range connections. Large-scale brain network modeling allows us to make predictions across these spatial scales by integrating neuroimaging data with biophysically based models to investigate how microscale changes invisible to conventional neuroimaging influence large-scale brain dynamics. To this end, we analyzed structural and functional neuroimaging data from a well characterized sample of 44 adult TBI patients recruited from a regional trauma center, scanned at 1–2 weeks postinjury, and with follow-up behavioral outcome assessed 6 months later. Thirty-six age-matched healthy adults served as comparison participants. Using The Virtual Brain, we fit simulations of whole-brain resting-state functional MRI to the empirical static and dynamic functional connectivity of each participant. Multivariate partial least squares (PLS) analysis showed that patients with acute traumatic intracranial lesions had lower cortical regional inhibitory connection strengths than comparison participants, while patients without acute lesions did not differ from the comparison group. Further multivariate PLS analyses found correlations between lower semiacute regional inhibitory connection strengths and more symptoms and lower cognitive performance at a 6 month follow-up. Critically, patients without acute lesions drove this relationship,

## Significance Statement

The variability of clinical outcomes following mild to moderate traumatic brain injury (TBI) is underscored by complex pathophysiological mechanisms that take effect across spatial scales. We used the neuroinformatics platform, The Virtual Brain, to model individualized brain activity and make inferences across these spatial scales. Specifically, this approach allowed us to link macroscopic brain dynamics with mesoscopic biophysical parameters, distinguishing semiacute mild to moderate TBI patients from comparison participants and predicting the long-term recovery of these patients. Our results demonstrate the sensitivity of our large-scale brain model to pathophysiological changes following TBI and illustrates how computational modeling may be used to advance understanding of chronic TBI outcome.

suggesting clinical relevance of regional inhibitory connection strengths even when traumatic intracranial lesions were not present. Our results suggest that large-scale connectome-based models may be sensitive to pathophysiological changes in semi-acute phase TBI patients and predictive of their chronic outcomes.

**Key words:** diffusion-weighted MRI; functional connectivity; functional MRI; network modeling; structural connectivity; traumatic brain injury

## Introduction

Chronic clinical outcomes following traumatic brain injury (TBI) are heterogeneous (Dabek and Caban, 2016; Si et al., 2018). Classifying patients based on the presence of pathoanatomic features on computerized tomography (CT) and/or magnetic resonance imaging (MRI) is a useful way to stratify the variance of TBI patients (Iverson et al., 2012; McMahan et al., 2014; Yuh et al., 2014; Palacios et al., 2017). However, even within these patient subgroups significant variability in clinical outcomes and cognitive performance can be observed (Iverson et al., 2012; Palacios et al., 2017). The sources of this variability are diverse (Kenzie et al., 2018) and may include forms of pathology not visible with conventional neuroimaging.

TBI has been described as a multiscale system deficit, with cognitive impairments manifesting through interactions between microscopic and macroscopic changes (Kenzie et al., 2018). On the macroscale, TBI is associated with decreased integrity of white matter (WM) pathways and an imbalance and inefficiency of functional networks (Hayes et al., 2016). Studies using diffusion-weighted MRI (dwMRI) have consistently detected decreases in fractional anisotropy (FA; Niogi and Mukherjee, 2010; Shenton et al., 2012; Douglas et al., 2015; Filley and Kelly, 2018) that correlate with cognition (Wallace et al., 2018; Palacios et al., 2020) and, if assessed in the semiacute phase, long-term clinical outcomes (Yuh et al., 2014). Functional connections are also sensitive to TBI, with alterations observed in multiple intrinsic connectivity networks (for review, see Sharp et al., 2014; Hayes et al.,

2016). Early-phase functional connectivity (FC) between and within networks may be predictive of long-term symptom severity (Palacios et al., 2017; Madhavan et al., 2019), while changes to FC dynamics (FCD) have been noted in the acute phase (Hou et al., 2019) and semiacute phase (Mayer et al., 2015; Vergara et al., 2018) following TBI.

On the microscale, TBI causes a neurometabolic cascade that alters neurotransmission and can have long-lasting effects (Giza and Hovda, 2015). The initial injury causes a sudden imbalance in glutamatergic and GABAergic neurotransmitter levels, as well as NMDA receptor malfunction (Giza and Hovda, 2015). Magnetic resonance spectroscopy (MRS) is capable of detecting changes to neuromodulatory concentrations *in vivo*. A recent meta-analysis found evidence for elevated glutamate concentrations in adult patients after a single mild TBI (mTBI) in the acute and subacute phases (Eisele et al., 2020). Furthermore, some studies have shown that these elevated glutamate concentrations are predictive of long-term outcomes (Shutter et al., 2004).

Connectome-based brain network modeling provides a novel perspective to TBI by allowing access to local and global parameters related to both micro-level neuromodulatory changes and macro-level connectivity changes. We used the neuroinformatics platform The Virtual Brain (TVB) to simulate whole-brain dynamics composed of interacting neural population models (Fig. 1; Ritter et al., 2013; Sanz Leon et al., 2013). Our model simulated brain areas as excitatory and inhibitory neural populations connected via GABA and NMDA synapses (Deco et al., 2014b; Schirner et al., 2018). Personalized simulations were constrained by each subject's structural connectome and fitted to their static and dynamic functional connectomes, which were computed from dwMRI and resting-state fMRI (rsfMRI; Schirner et al., 2015). The parameter-fitting procedure tuned the parameters global coupling ( $G$ ) and regional inhibitory connection strengths to yield FC predictions for each subject. Global coupling is a scaling factor related to the level of integration/segregation in the system (Deco et al., 2015), while regional inhibitory connection strength indicates the level of inhibitory influence at each brain region. These model parameters have been used to describe healthy neural dynamics (Jirsa et al., 2010; Roy et al., 2014) and those of clinical populations (Falcon et al., 2016; Jirsa et al., 2017; Aerts et al., 2018; Zimmermann et al., 2018).

In the present exploratory study, we considered a well characterized sample of TBI patients and healthy comparison participants. Previous studies of this sample have described group differences and predictive correlations between semi-acute phase neuroimaging data and 6 month behavioral outcome measures using fractional

Received February 22, 2021; accepted January 14, 2022; First published February 1, 2022.

The authors declare no competing financial interests.

Author contributions: T.G., P.M., B.L., and A.R.M. designed research; T.G. performed research; T.G., M.S., K.S., B.L., and A.R.M. analyzed data; T.G., M.S., K.S., P.R., P.M., B.L., and A.R.M. wrote the paper.

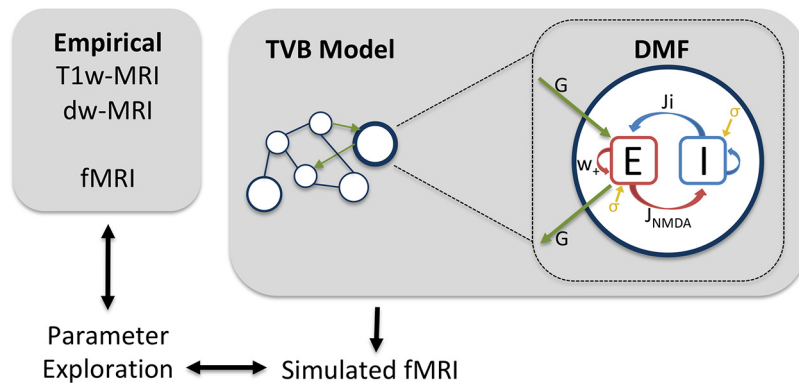
The research herein was supported by the National Science and Engineering Research Council (NSERC) and the James S. McDonnell Foundation. A Postgraduate Scholarship (doctoral) from the NSERC was awarded to T.G. NSERC Grant RGPIN-2017-06793 was awarded to A.R.M. Canadian Institutes of Health Research (CIHR) Catalyst Grant CBT 127060, Ontario Neurotrauma Foundation Grant 2012-ABI-CAT3-973, and CIHR Operating Grant MOP133728 were awarded to B.L. H2020 Research and Innovation Action Grants 826421 (Virtual Brain Cloud) and 785907 (Human Brain Project); European Research Council Grant 683049; German Research Foundation CRC Grants 1315 and 936, and RI 2073/6-1; and Berlin Institute of Health & Foundation Charité, Johanna Quandt Excellence Initiative, were awarded to P.R.

Correspondence should be addressed to Anthony Randal McIntosh at [rmcintosh@research.baycrest.org](mailto:rmcintosh@research.baycrest.org).

<https://doi.org/10.1523/ENEURO.0075-21.2022>

Copyright © 2022 Good et al.

This is an open-access article distributed under the terms of the Creative Commons Attribution 4.0 International license, which permits unrestricted use, distribution and reproduction in any medium provided that the original work is properly attributed.



**Figure 1.** The Virtual Brain workflow. Structural and functional connectomes were created from each subject's dwMRI and fMRI data, respectively. Each subject's unique structural connectome constrained their personal brain simulation, wherein local dynamics were represented by the dynamic mean field (DMF) model (Eqs. 1–6; Deco et al., 2014a,b). The simulated local synaptic gating potentials were then fed through the Balloon–Windkessel hemodynamic model, producing simulated fMRI time series. Each subject's simulated fMRI time series was fitted to their functional connectome through parameter space exploration. The resulting subject-specific parameters were used in later analyses. *E*, Excitatory neural population; *I*, inhibitory neural population;  $w_+$ , recurrent potential;  $J_{NMDA}$ , excitatory connection strength.

anisotropy (Yuh et al., 2014) and functional connectivity (Palacios et al., 2017). In the present work, we integrated these modalities with personalized TVB simulations, which allowed us to consider the role of local neural dynamics in patient outcomes. We examined group differences as well as predictive correlations between semiacute local brain dynamics and clinical outcomes at a 6 month follow-up. Our analyses considered the following two patient subgroups: CT/MRI positive, defined as patients with any signs of traumatic intracranial lesions on day-of-injury CT scan or semiacute MRI; and CT/MRI negative, defined as patients without any such abnormality.

## Materials and Methods

### Participants

Forty-four patients and 36 comparison participants were acquired from the pilot phase of the Transforming Research and Clinical Knowledge in Traumatic Brain Injury project (Track-TBI Pilot; Yue et al., 2013). Patients were collected from convenience sampling at the acute-care, level I trauma center in San Francisco General Hospital. The inclusion criteria included a CT scan to assess for evidence of acute TBI within 24 h of injury, Glasgow Coma Scale score of 13–15 [on emergency department (ED) arrival], loss of consciousness (LOC) <30 min, post-traumatic amnesia duration of <24 h, and age 18–55 years (inclusive). Patients with a previous significant TBI (LOC for >5min) were also excluded. Overlapping patient and comparison participant samples have been described in detail in two previous publications (Yuh et al., 2014; Palacios et al., 2017). Eight patients did not complete the clinical and cognitive assessment at the 6 month follow-up and were therefore removed from analyses using these data ( $n_{\text{patient}} = 36$  for 6 month clinical/cognitive data).

Each patient's head CT on ED presentation and semiacute brain MRI (5–18 d postinjury) was characterized using the TBI common data elements criteria (Yue et al., 2013). Each CT and MRI was anonymized and reviewed

by a board-certified neuroradiologist blinded to the data. The TBI patients were divided into the following two subgroups: (1) CT/MRI positive ( $n = 14$ ; age: mean = 39 years; SD = 13.7), defined as patients with any acute traumatic intracranial lesion (epidural hematoma, subdural hematoma, subarachnoid hemorrhage, contusion, or evidence of traumatic axonal injury) and/or depressed skull fracture on either CT or MRI; and (2) CT/MRI negative ( $n = 30$ ; age: mean = 31 years; SD = 9.0), defined as patients without any such abnormality on either CT or MRI. There were no large lesions expected to adversely affect the dwMRI or fMRI results. Patient characteristics are presented in Table 1. We note that all of the TBI patients meet the definition of mTBI by some standards (Yue et al., 2013), though the patients with positive CT findings would be considered moderate by other criteria (Krainin et al., 2011).

### Outcome measures

The outcome measures included the Extended Glasgow Outcome Scale (GOS-E) at 6 months postinjury performed through structured interviews with each participant by research assistants trained to uniformly assess the GOS-E. A trained neuropsychologist also administered the following behavioral and cognitive tests at 6 months after injury: Trail Making Tests (TMTs) Parts A and B, Wechsler Adult Intelligence Scale (WAIS), fourth edition; Satisfaction with Life Scale (SWLS; Diener et al., 1985); Brief Symptom Inventory (BSI) 18 (Derogatis and Melisaratos, 1983); and California Verbal Learning Test (CVLT), second edition (Delis et al., 2000). Higher scores on the GOS-E, SWLS, WAIS, and CVLT were coded such that higher scores indicate better outcome, while scores on the BSI and TMT are coded such that higher scores indicate poorer outcome.

### Principal component analysis

Principal component analysis (PCA) was used to expose the latent structure within the collection of outcome measures and to reduce the dimensionality of the dataset.

**Table 1: Patient characteristics**

| Scale                                  | Subscale              | CT/MRI-positive (n = 14)  | CT/MRI negative (n = 30)   | Comparison participants (n = 36) | Analysis for group difference  |
|--|-----------------------|---|--|----------------------------------|--------------------------------|
| Age (years)                            |                       | 39.9 (13.8)   | 31.2 (9.0)   | 26.6 (7.7)                       | $F_{(2,79)} = 9.7, p = 0.0001$ |
| Gender                                 |                       | 9 male; 5 female  | 18 male; 12 female   | 25 male; 11 female               | $\chi^2(2)^2 = 0.65, p = 0.72$ |
| Race                                   |                       | 9 white, 2 More than one race; 1 African American or African; 1 Asian; 1 Hawaiian or Pacific Islander | 23 white; 3 Asian; 2 Hawaiian or Pacific Islander; 1 African American or African; 1 more than one race | Unknown                          |                                |
| Education                              |                       | 14.6 (2.1)  | 14.6 (3.1)   | Unknown                          | $t_{(42)} = -0.08, p = 0.93$   |
| Glasgow Coma Scale                     |                       | 14.6 (0.63)   | 14.9 (0.43)  | NA                               | $t_{(42)} = 1.4, p = 0.18$     |
| Loss of consciousness                  |                       | 8 none; 6 < 0.5 h   | 12 none; 18 < 0.5 h  | NA                               | $\chi^2(1)^2 = 0.55, p = 0.46$ |
| Post-traumatic amnesia                 |                       | 5 none; 4 < 0.5 h; 5 0.5–24 h<br>n = 11   | 14 None; 15 < 0.5 h; 1 0.5–24 h<br>n = 27  | NA                               | $\chi^2(1)^2 = 8.6, p = 0.01$  |
| Glasgow Outcome Scale Extended 6 month |                       | 6.8 (0.98)  | 7.0 (0.94)   | NA                               | $t_{(36)} = 0.64, p = 0.52$    |
| Brief Symptom Inventory                | Anxiety               | 54.9 (7.7)  | 53.6 (10.6)  | NA                               | $t_{(36)} = -0.37, p = 0.71$   |
|  | Depression            | 54.2 (10.2)   | 52.6 (10.6)  | NA                               | $t_{(36)} = -0.42, p = 0.67$   |
|  | Somatic               | 55.8 (7.9)  | 53.0 (9.7)   | NA                               | $t_{(36)} = -0.86, p = 0.39$   |
|  | Global Severity Index | 57.0 (7.3)<br>n = 11  | 53.6 (10.8)<br>n = 26  | NA                               | $t_{(36)} = -0.97, p = 0.34$   |
| Satisfaction with Life Score           |                       | 19.1 (7.6)<br>n = 11  | 22.6 (5.9)<br>n = 25   | NA                               | $t_{(35)} = 1.5, p = 0.14$     |
| Trail Making Test                      | Part A                | 30.7 (9.7)  | 28.3 (10.6)  | NA                               | $t_{(35)} = -0.65, p = 0.52$   |
|  | Part B                | 69.8 (25.0)   | 76.4 (65.2)  | NA                               | $t_{(35)} = 0.32, p = 0.75$    |
| Wechsler Adult Intelligence Scale      | Processing Speed      | 109.2 (16.3)  | 106.5 (14.6)   | NA                               | $t_{(35)} = -0.49, p = 0.62$   |
| California Verbal Learning Test        |                       | 55.5 (9.8)  | 55.5 (9.2)   | NA                               | $t_{(35)} = 0.06, p = 0.98$    |

The following statistics are reported: one-way ANOVA (age),  $\chi^2$  test of independence (gender, loss of consciousness, post-traumatic amnesia), independent-samples *t* test [Education, Glasgow Coma Scale, Glasgow Outcome Scale Extended (6 month), Brief Symptom Inventory, Satisfaction with Life Score, Trail Making Test Part A and B, Wechsler Adult Intelligence Scale, and California Verbal Learning Test. NA, Not applicable. Data are mean (SD), unless otherwise indicated.

Data were transformed if significantly skewed ( $p < 0.05$ ) using square root or log10 to improve the correlation structure. The point of inflection on a scree plot was used to identify the number of components to keep. After extracting this number of factors, a promax rotation was performed using the “principal” function in R. The correlation between factors was  $r = 0.33$ , exceeding 0.32 and therefore indicating >10% overlap in variance between factors, warranting an oblique rotation (Tabachnick and Fidell, 2001). As such, we used the two-factor solution with a promax rotation for later analyses. Factors were designated as (1) TBI Symptoms, and (2) Age and Cognition based on the primary symptoms, cognitive functions, and characteristics assessed by the variables that strongly contributed to each (loading, >0.3; see Table 5). Factor scores for each participant represent the degree to which they express the factor. Higher factor scores on the TBI Symptoms factor indicate poorer outcome, while higher factor scores on the Age and Cognition factor imply older age and lower performance (Tables 2-Tables 4).

**Imaging procedure**

MRIs were acquired on a scanner (SIGNA EXCITE 3 T MRI, GE Healthcare) equipped with an eight-channel phased array head radio frequency coil. The following conventional 3 T MRI sequences were performed: (1) axial three-dimensional inversion recovery fast spoiled gradient recalled echo T1-weighted images [echo time (TE)=1.5 ms; response time (TR) = 6.3 ms; inversion time (TI) = 400 ms; flip angle, 15°] with 230 mm field of view (FOV) and 156 contiguous partitions (1.0 mm) at a 256 · 256 matrix; (2) axial T2-weighted fluid-attenuated inversion recovery images (TE=126 ms; TR= 10 s;

TI = 2200 ms) with 220 mm FOV, and 47–48 contiguous slices (3.0 mm) at a 256 · 256 matrix; and (3) axial magnetization-prepared gradient echo T2\*-weighted images (TE = 15 ms; TR = 500 ms; flip angle 20°) with a 220 · 170 mm FOV and 47–48 contiguous slices (3.0 mm) at a 256 · 192 matrix. A 7 min rsfMRI single-shot gradient-echo echoplanar imaging sequence was acquired (TR=2000 ms; TE=28 ms; flip angle=90° gradient; FOV=220 mm; voxel size=3.4 · 3.4 ·

**Table 2: MRI radiologic findings of the CT/MRI-positive TBI group**

|    |   |
|----|---|
| 1  | 4 contusions, 1 shear (MRI)   |
| 2  | 2 shear (MRI)   |
| 3  | 1 shear (MRI)   |
| 5  | 2 shear (MRI)   |
| 5  | 4 contusions (MRI)  |
|    | 1 intracranial lesions, 1 skull fracture, 1 subdural hematoma, 1 contusion, 1 brain swelling (CT) |
| 6  | 4 contusions, 3 shears (MRI)  |
| 7  | 2 shear (MRI)   |
| 8  | 1 skull fracture (CT)   |
| 9  | 1 contusion, 2 shear (MRI)  |
|    | 1 intracranial lesions, 1 sub arachnoid hemorrhage, 1 contusion                                   |
| 10 | 1 subdural hematoma, 2 contusions (MRI)   |
|    | 1 intracranial lesions, 1 subarachnoid hemorrhage, 1 contusion                                    |
| 11 | 1 subdural hematoma, 2 contusions, 2 shear (MRI)  |
|    | 1 intracranial lesions, 1 skull fracture, 1 subdural hematoma, 1 subarachnoid hematoma            |
| 12 | 1 intracranial lesions, 1 subarachnoid hematoma (CT)  |
| 13 | 2 shear (MRI)   |
| 14 | 1 shear, 1 deep shear (MRI)   |

**Table 3: Cortical and subcortical regions from the regional map parcellation from Kötter and Wanke (2005)**

| Index |      | Region   |
|-------|------|--|
| Right | Left |  |
| 1     | 49   | Primary auditory cortex                              |
| 2     | 50   | Secondary auditory cortex                            |
| 3     | 51   | Amygdala   |
| 4     | 52   | Anterior cingulate cortex                            |
| 5     | 53   | Posterior cingulate cortex                           |
| 6     | 54   | Retrosplenial cingulate cortex                       |
| 7     | 55   | Subgenual cingulate cortex                           |
| 8     | 56   | Frontal eye field                                    |
| 9     | 57   | Gustatory cortex                                     |
| 10    | 58   | Hippocampus  |
| 11    | 59   | Anterior insula                                      |
| 12    | 60   | Posterior insula                                     |
| 13    | 61   | Primary motor cortex                                 |
| 14    | 62   | Inferior parietal cortex                             |
| 15    | 63   | Intraparietal cortex                                 |
| 16    | 64   | Medial parietal cortex                               |
| 17    | 65   | Superior parietal cortex                             |
| 18    | 66   | Centrolateral prefrontal cortex                      |
| 19    | 67   | Dorsolateral prefrontal cortex                       |
| 20    | 68   | Dorsomedial prefrontal cortex                        |
| 21    | 69   | Medial prefrontal cortex                             |
| 22    | 70   | Orbitoinferior prefrontal cortex                     |
| 23    | 71   | Orbitolateral prefrontal cortex                      |
| 24    | 72   | Orbitomedial prefrontal cortex                       |
| 25    | 73   | Prefrontal polar cortex                              |
| 26    | 74   | Ventrolateral prefrontal cortex                      |
| 27    | 75   | Parahippocampal cortex                               |
| 28    | 76   | Dorsolateral premotor cortex                         |
| 29    | 77   | Medial premotor cortex                               |
| 30    | 78   | Ventrolateral premotor cortex                        |
| 31    | 79   | Primary somatosensory cortex                         |
| 32    | 80   | Secondary somatosensory cortex                       |
| 33    | 81   | Central temporal cortex                              |
| 34    | 82   | Inferior temporal cortex                             |
| 35    | 83   | Temporal polar cortex                                |
| 36    | 84   | Superior temporal cortex                             |
| 37    | 85   | Ventral temporal cortex                              |
| 38    | 86   | Visual area 1 (primary visual cortex)                |
| 39    | 87   | Visual area 2 (secondary visual cortex)              |
| 40    | 88   | Anterior visual area, dorsal part                    |
| 41    | 89   | Anterior visual area, ventral part                   |
| 42    | 90   | Thalamic ROI with major frontal connections          |
| 43    | 91   | Thalamic ROI with major temporal connections         |
| 44    | 92   | Thalamic ROI with major occipitoparietal connections |
| 45    | 93   | Caudate nucleus                                      |
| 46    | 94   | Putamen  |
| 47    | 95   | Pallidum   |
| 48    | 96   | Accumbens nucleus                                    |

4.0 mm). The subjects were asked to close their eyes, relax, not focus their attention on anything specific, and not fall asleep. Whole-brain diffusion tensor imaging (DTI) was performed with a multislice single-shot, spin-echo echoplanar pulse sequence (TE = 63 ms; TR = 14 s) using 55 diffusion-encoding directions, isotropically distributed over the surface of a sphere with electrostatic repulsion, acquired at  $b = 1000 \text{ s/mm}^2$ , seven acquisitions at  $b = 0 \text{ s/mm}^2$ , 72 interleaved slices of 1.8 mm thickness each with no gap between slices, a  $128 \cdot 128$  matrix, and an FOV of  $230 \cdot 230$  mm. For DTI,

parallel imaging was used using the array spatial sensitivity encoding technique with an acceleration factor of 2. The MRI scanner and the scanning protocol used were the same for the patient and comparison groups.

### Parcellation scheme

The 96-region of interest (ROI) regional map (RM-96) parcellation (Kötter and Wanke, 2005) was used for construction of the structural connectivity (SC) and functional connectivity matrices. The RM-96 parcellation has 82 cortical and 14 subcortical ROIs (Bezgin et al., 2017). It has been used previously in TVB models (Ritter et al., 2013; Shen et al., 2019a) and was developed to harmonize cytoarchitectonic, topographic and functional definitions of brain regions across primate species (Kötter and Wanke, 2005), which is an advantage for network modeling work that integrates structural and functional neuroimaging data.

### dwMRI preprocessing and tractography

Preprocessing of dwMRI data, and subsequent tractography was completed using a Python implementation of a previously reported procedure (Shen et al., 2019b). Eddy current-induced distortions were corrected for using the FSL “eddy\_correct” command, and the diffusion gradient vectors rotated accordingly. The MNI152\_T1\_1mm standard brain included with FSL was then registered to each subject’s T1-weighted image using a nonlinear registration conducted with Advanced Normalization Tools (ANTs). Warps produced in this step were used to map the 96-RM parcellation (ANTs: Avants et al., 2011; RM-96 parcellation: Bezgin et al., 2017) onto each subject’s T1-weighted image using the ANTs “WarpImageMultiTransform” executable and a nearest neighbor interpolation. The FSL FLIRT function was used to register subject T1-weighted images to dwMRI space. Seed and target ROI masks were defined as the WM voxels adjacent to each gray matter (GM) ROI within each region of the RM-96 parcellation scheme. An exclusion mask for each seed mask was also created using the GM voxels adjacent to the seed mask. For intrahemispheric tracking, exclusion masks of the opposite hemisphere were also used. Diffusion tensor models were fitted at each voxel by FSL “dtifit,” and then a probabilistic diffusion model was fit using FSL “bedpostX.” Probabilistic tractography was performed between all ROIs of the RM-96 parcellation scheme using the FSL “probtrackx2” function. The parameters used for tracking were as follows: 5000 seeds per voxel, 2000 steps, 0.5 mm step length, termination of paths that loop back on themselves, and rejection of paths that pass through an exclusion mask. The curvature threshold was set to 0.2.

Two SC matrices were constructed from the tractography results representing weights and lengths of connections, respectively. Weights were generated by taking the number of streamlines detected between each ROI pair and dividing it by the total number of streamlines that were successfully sent from the seed mask. In this way, they were corrected for the number of voxels in each seed ROI. The length of each

**Table 4: TVB Model parameters**

| Parameter                 | Value (no. of steps) | Description  |
|---------------------------|----------------------|--|
| G                         | 1.4–2.8 (50)         | Scaling factor for inter-region (global) excitatory coupling |
| Noise ( $\sigma$ )        | 0.001                | Amplitude of noise kernel                                    |
| Conduction velocity (m/s) | 6                    | Speed of inter-region (global) signal transmission           |
| $w_+$                     | 1.4                  | Excitatory recurrent potential                               |
| $J_{GABA}$ (nA)           | 1.0*                 | Local feedback inhibitory synaptic coupling                  |
| $J_{NMDA}$ (nA)           | 0.15                 | Local excitatory coupling                                    |
| Time steps (ms)           | 600,000              | Simulation duration  |
| fMRI TR (ms)              | 2000                 | Simulation TR  |

\* $J_{GABA}$  values were initialized at 1.0 and adjusted iteratively by the FIC tuning algorithm during each simulation.

connection, defined in millimeters, was obtained by taking the median length of all connecting streamlines for each region pair. To obtain tract lengths using FSL probtrackx2, tractography was run with and without the distance correction, and dividing the results gave an estimate of the lengths of each streamline. As tractography cannot provide information on directionality of connections, matrices were symmetrized such that the weights between areas A to B and B to A were averaged. To account for numerous false positives that are known to result from probabilistic tractography (Shen et al., 2019b), any connections not present in at least 50% of the comparison subjects were set to zero (Roberts et al., 2017).

### Resting-state fMRI

Resting-state fMRI preprocessing was done using the FMRIB FEAT toolbox. The following steps were performed: (1) motion correction with MCFLIRT (Jenkinson et al., 2002), (2) slice timing correction, (3) spatial smoothing (5 mm), and (4) registration to anatomic volume. A nuisance regression removed signals from CSF, white matter, and six motion parameters. Global signal regression was not performed. Last, a high-pass filter (100 s) was applied.

**Table 5: Factor loadings for 6 month outcome variables**

| Scale                             | Subscale              | TBI symptoms | Age and cognition |
|-----------------------------------|-----------------------|--------------|-------------------|
| Glasgow Outcome Scale Extended    | 6 month               | <b>-0.73</b> | -0.033            |
| Brief Symptom Inventory           | Somatic               | <b>0.71</b>  | 0.16              |
|                                   | Depression            | <b>0.86</b>  | -0.075            |
|                                   | Anxiety               | <b>0.87</b>  | -0.032            |
|                                   | Global severity index | <b>0.99</b>  | -0.043            |
| Satisfaction with Life Scale      |                       | <b>-0.83</b> | 0.29              |
| Education                         |                       | <b>-0.33</b> | <b>-0.51</b>      |
| Age                               |                       | -0.036       | <b>0.42</b>       |
| Trail Making Test                 | Part A                | 0.19         | <b>0.62</b>       |
|                                   | Part B                | -0.085       | <b>0.89</b>       |
| Wechsler Adult Intelligence Scale | Processing speed      | 0.25         | <b>-0.92</b>      |
| California Verbal Learning Test   |                       | -0.10        | <b>-0.31</b>      |
| Percentage covariance             |                       | 37%          | 22%               |

Loadings >0.3 are shown in bold to assist interpretation. BSI and TMT scales are reverse coded such that higher scores indicate more symptoms or poorer performance.

A weighted average time series was calculated for every ROI, such that each voxel was weighted according to the probability it was within a given ROI (all voxels summed to one), with voxels more central in the ROI being favored (Shen et al., 2012). This approach aimed to minimize partial volume bias. An FC matrix was calculated for each subject by finding the pairwise Pearson’s correlation coefficient between the weighted average time series of each ROI pair. To characterize the dynamics of the resting fluctuations, we calculated FCD matrices for each subject. The 7 min resting-state scan was split into 92 windows of 30 s overlapping by 4 s. We calculated the FC matrix for each time window centered at time  $t$ , generating a time series of FC matrices,  $FC(t)$ . The FCD matrix is a  $t$  by  $t$  matrix with element  $(t1, t2)$  calculated as the Pearson’s correlation of the upper triangle of the FC matrices  $FC(t1)$  and  $FC(t2)$ . This method of characterizing resting fluctuations with FCD has been used previously (Deco et al., 2017).

No participants were removed because of head motion during the resting-state fMRI scan (absolute head motion at a single time point was not more than 3.5 mm, and relative head motion did not exceed 2.5 mm for any participants. A one-way ANOVA showed the comparison participants (mean = 0.27, SD = 0.28), CT/MRI-positive patients (mean = 0.25, SD = 0.20), and CT/MRI-negative patients (mean = 0.23, SD = 0.17) did not differ in mean absolute head motion ( $F_{(2,77)} = 0.22, p = 0.801$ ). Similarly the comparison participants (mean = 0.06, SD = 0.03), CT/MRI-positive (mean = 0.07, SD = 0.02), and CT/MRI-negative patients (mean = 0.10, SD = 0.09) did not differ in mean relative head motion ( $F_{(2,77)} = 2.00, p = 0.14$ ).

### The Virtual Brain

We simulated fMRI time series for each subject. Simulations were constrained by each subject’s empirical SC and fitted to their FC and FCD matrices. The process for each subject may be summarized as follows: (1) SC matrices (weights and tract lengths) are input to fast\_tvb ([https://github.com/BrainModes/fast\\_tvb](https://github.com/BrainModes/fast_tvb), [https://hub.docker.com/r/thevirtualbrain/fast\\_tvb](https://hub.docker.com/r/thevirtualbrain/fast_tvb)); (2) local and global parameters are chosen for the model; (3) fMRI is simulated based on local and global parameters and is constrained by individual SC; (4) individual fMRI simulations are optimized by rerunning simulations with different local and/or global parameter values that yielded the best fit; and (5) the best-fitting local and global parameters are used for group comparisons and

**Table 6: Model-fitting results**

| Fitting metric  | Descriptive statistic | CT/MRI-positive (n = 14) | CT/MRI negative (n = 30) | Comparison (n = 36) | Significance                  |
|---|-----------------------|--------------------------|--------------------------|---------------------|-------------------------------|
| Functional connectivity, unlefted correlation                 | Mean                  | 0.66                     | 0.66                     | 0.68                | $F_{(2,77)} = 0.32, p = 0.73$ |
|   | SD                    | 0.11                     | 0.09                     | 0.12                |                               |
|   | Minimum               | 0.50                     | 0.33                     | 0.35                |                               |
|   | Maximum               | 0.79                     | 0.84                     | 0.88                |                               |
| Functional connectivity dynamics, Kolmogorov–Smirnov distance | Mean                  | 0.13                     | 0.12                     | 0.12                | $F_{(2,77)} = 0.03, p = 0.97$ |
|   | SD                    | 0.07                     | 0.14                     | 0.13                |                               |
|   | Minimum               | 0.04                     | 0.03                     | 0.03                |                               |
|   | Maximum               | 0.31                     | 0.70                     | 0.74                |                               |
| Iterations optimal solution was chosen for                    | Mean                  | 37.0%                    | 34.5%                    | 34.3%               | $F_{(2,77)} = 0.15, p = 0.86$ |
|   | SD                    | 13.7%                    | 16.2%                    | 14.9%               |                               |
|   | Minimum               | 15.0%                    | 15.0%                    | 15.0%               |                               |
|   | Maximum               | 75.0%                    | 90.0%                    | 90.0%               |                               |

to account for individual variability on our neuropsychological factors. The modeling process in TVB has been described more thoroughly previously (Ritter et al., 2013; Sanz Leon et al., 2013), and the mean field approximations used have been validated independently (Deco and Hugues, 2012). Readers may also refer to an excellent, more general review of dynamic models of large-scale brain activity (Breakspear, 2017).

**Dynamic mean field model**

The dynamic mean field model represents each region of interest as a population of excitatory and inhibitory neurons coupled by excitatory NMDA synapses and inhibitory GABA synapses. The model is defined by a set of six stochastic nonlinear differential equations, modified slightly from those presented by Deco et al. (2014a,b), such that the global, inter-region connections incorporated time delays, as follows:

$$I_i^{(E)}(t) = W_E I_0 + W_+ J_{\text{NMDA}} S_i^{(E)}(t) + G J_{\text{NMDA}} \sum_j C_{ij} S_j^{(E)} \left( t - \frac{D_{ij}}{s} \right) - J_i S_i^{(I)}(t) \tag{1}$$

$$I_i^{(I)}(t) = W_I I_0 + J_{\text{NMDA}} S_i^{(E)}(t) - S_i^{(I)}(t) \tag{2}$$

$$r_i^{(E)}(t) = \frac{a_E I_i^{(E)}(t) - b_E}{1 - \exp(-d_E (a_E I_i^{(E)}(t) - b_E))} \tag{3}$$

$$r_i^{(I)}(t) = \frac{a_I I_i^{(I)}(t) - b_I}{1 - \exp(-d_I (a_I I_i^{(I)}(t) - b_I))} \tag{4}$$

$$\frac{dS_i^{(E)}(t)}{dt} = \frac{-S_i^{(E)}(t)}{\tau_E} + \left( 1 - S_i^{(E)}(t) \right) \gamma r_i^{(E)}(t) + \sigma v_i(t) \tag{5}$$

$$\frac{dS_i^{(I)}(t)}{dt} = \frac{-S_i^{(I)}(t)}{\tau_I} + r_i^{(I)}(t) + \sigma v_i(t). \tag{6}$$

$I_i^{(E)}$  represents the input current to the excitatory population of region  $i$ , while  $I_i^{(I)}$  denotes the input current to the inhibitory population at that region. Equations 3 and 4

convert input current to firing rates,  $r_i^{(E/I)}$ , for the excitatory, and inhibitory populations of region  $i$  respectively. Finally, the firing rate is used to calculate synaptic gating ( $S_i^{(E/I)}$ ) of both the excitatory ( $E$ ) and inhibitory ( $I$ ) populations in Equations 5 and 6.

Input current to the excitatory population is defined by the following four sources: the overall effective external current ( $W_E I_0$ ), recurrent excitatory currents [ $W_+ J_{\text{NMDA}} S_i^{(E)}(t)$ ], recurrent inhibitory currents [ $J_i S_i^{(I)}(t)$ ], and excitatory currents from the excitatory populations of the other region

$$\left[ G J_{\text{NMDA}} \sum_j C_{ij} S_j^{(E)} \left( t - \frac{D_{ij}}{s} \right) \right].$$

Long-range (inter-region)

connections between regions  $i$  and  $j$  are constrained by the connectivity weight  $C_{ij}$ , where  $C_{ij}$  is the  $(i, j)$ -th entry in the SC weights matrix.  $G$  strength scales the long-range connectivity weights ( $C_{ij}$ ). Time delays are incorporated through the division of the distance between regions  $i$  and  $j$  ( $D_{ij}$ ), by conduction velocity ( $s$ ). The input current to the inhibitory population is defined by the following: external currents ( $W_I I_0$ ), recurrent excitatory currents [ $J_{\text{NMDA}} S_i^{(E)}(t)$ ], and recurrent inhibitory currents [ $S_i^{(I)}(t)$ ]. Notably, noise ( $\sigma$ ) is added in Equations 5 and 6, where  $v_i$  is uncorrelated standard Gaussian noise, with amplitude scaled by  $\sigma$ .

To maintain an average firing rate between 2 and 5 Hz feedback inhibition control (FIC) was applied (Deco et al., 2014a; Schirner et al., 2018). The FIC algorithm iteratively adjusts the inhibitory connection weights ( $J_i$ ) at each region so that each local excitatory population maintains an average firing rate of ~3 Hz. By maintaining local excitation–inhibition balance in this way, we produce simulations that fit better with empirical fMRI and show more realistic firing rates (Deco et al., 2014a).

The differential equations were integrated with a step size of 0.1 ms. After starting a simulation, first the  $J_i$  values were fitted using an automatic routine, and then 8 min and 20 s of fMRI were simulated to match the duration of the empirical fMRI time series. Eighty seconds of simulated fMRI data were removed to account for initial transients. Simulated synaptic activity was fed through the Balloon–Windkessel hemodynamic model producing simulated fMRI data (Friston et al., 2000). All simulations were performed using an implementation of the dynamic mean

field model in C (Schirner et al., 2018; code available as follows: [https://github.com/BrainModes/fast\\_tvb](https://github.com/BrainModes/fast_tvb)).

### Parameter space exploration

Subject-specific parameter space explorations found the best-fitting value of global coupling to maximize the fit of their simulation to their empirical FC and FCD. To avoid overfitting, we used two features to define goodness-of-fit. Our first feature was a maximal uncentered Pearson correlation of the upper triangle of each subject's empirical and simulated FC matrices. The second was the minimal Kolmogorov–Smirnov distance between the distributions formed by the upper triangle of the simulated and empirical FCD matrices. The uncentered Pearson correlation takes into account the difference in the mean values of the FC matrices (Deco et al., 2014a), and fitting FCD matrix distributions with Kolmogorov–Smirnov distance has been used previously to effectively fit brain dynamics in network models (Deco et al., 2017). We explored 50 values of  $G$  for each subject, and, to account for the effect of intrasubject variability because of our stochastic model, we ran 20 iterations of the parameter space exploration (PSE) for each subject with randomized initial conditions, resulting in 1000 simulations being run for every subject. Regional inhibitory connection strengths were fitted for each of these simulations via the FIC tuning algorithm described in the previous section. For each iteration of the PSE, we ranked the FC and FCD fits for each value of  $G$  and chose the optimal  $G$  value based on the best combined rank. Then we chose the value of  $G$  that most frequently (mode) produced the best combined FC/FCD fit. We also used the regional  $J_i$  values for the best fitting value of  $G$ , found by the FIC algorithm. We refer to global coupling and regional inhibitory connection weights (97 variables total) as the “TVB parameters” collectively. Note that global coupling was used to maximize fit with empirical fMRI, while the fitting target for regional inhibitory connection strength was the average firing rate of the excitatory population at each region.

### Partial least squares

Partial least squares (PLS) is a multivariate statistical method that relates two sets of variables by identifying linear combinations of variables in both sets that maximally covary together (McIntosh and Lobaugh, 2004; McIntosh and Mišić, 2013). We used PLS to find optimal relationships between a set of brain variables and either a study design (mean-centering PLS) or a set of behavioral variables (behavioral PLS). In PLS, singular value decomposition is used to find orthogonal latent variables that explain the maximal amount of covariance between brain variables and design or behavior variables. For each latent variable, brain saliences are calculated for each brain region that indicate the degree to which each region contributes to the relationship between brain and design/behavior expressed by the latent variable. In mean-centering PLS, design saliences indicate the group, condition, or group  $\times$  condition profiles that best describe the

relationship between the set of brain and design variables. In behavioral PLS, behavior saliences indicate the profile of behavior variables that best characterize the relationship between brain and behavior variables. Brain scores are calculated for each subject and latent variable by multiplying the matrix of brain variables by the brain saliences. The brain score indicates the degree to which each participant contributes to each latent variable. Last, singular values are the covariance between brain and behavior/grouping variables. They can also be evaluated as a percentage of the total covariance between measures that each latent variable accounts for.

In our study, we used mean centering PLS to determine the relationship between several brain measures and group status. The brain measures considered were a vectorized version of the upper triangle of the SC/FC matrices, FA values from all voxels within our white matter mask, and TVB parameters (global coupling and regional inhibitory connection strength values). For each brain measure, an omnibus PLS was performed that found the optimal contrasts in brain measures between group membership. We also used behavioral PLS to determine the relationships between the TVB parameters (global coupling and regional inhibitory connection strength) and factor scores from a set of patient outcome variables.

Permutation testing was used to determine the significance of each latent variable. Rows of the data matrix were randomly reordered, and the singular value was recalculated. This was done 1000 times, creating a distribution of singular values. Then a  $p$ -value for the original singular value was calculated by taking the proportion of singular values from the sampling distribution that were larger than the original singular value. The  $p$ -value can be thought of as the probability of obtaining a singular value of this size under the null hypothesis that there is no association between brain measure and design/behavior.

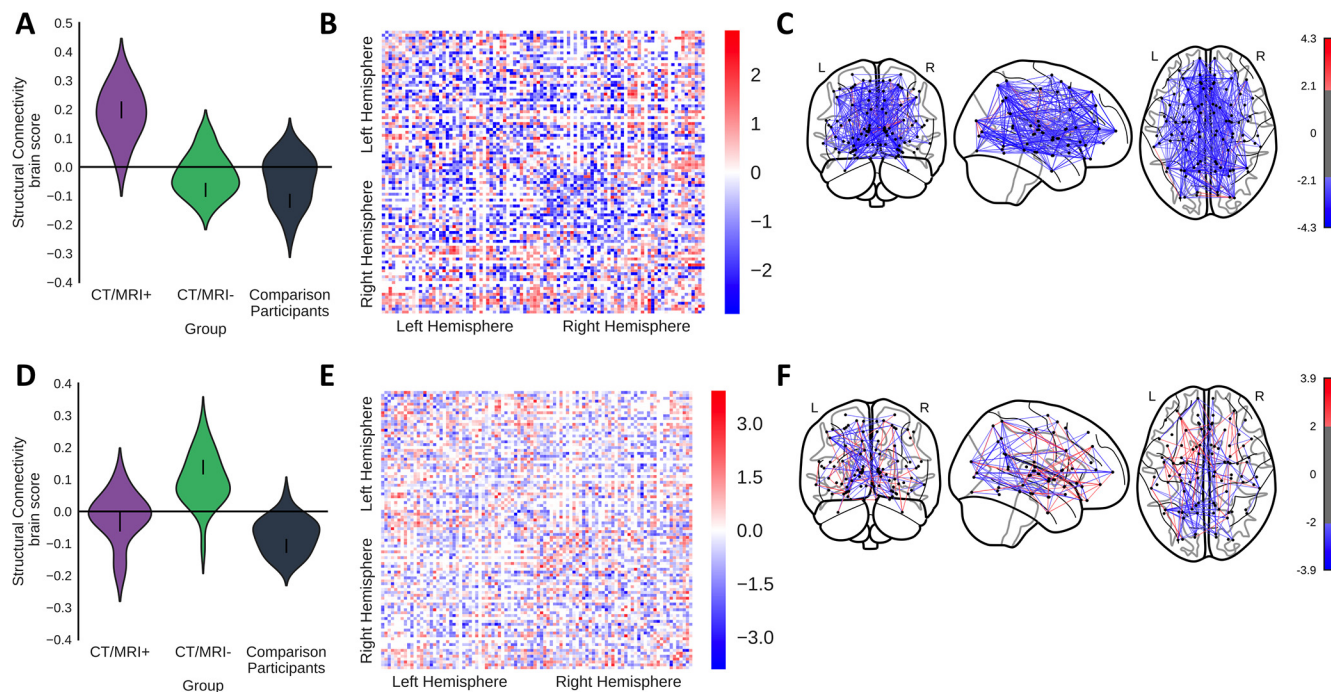
Bootstrapping was used to estimate the reliability of each brain salience. Participants were randomly resampled 1000 times with replacement, while respecting group membership. The resampled matrices were used to recalculate the singular vector decomposition, producing a sampling distribution for the weights in the singular vectors. The SE was calculated from this sampling distribution, reflecting the stability of the weight regardless of which participants are included in the analysis. Then a bootstrap ratio (BSR) was calculated for each brain salience (voxel, brain region, connection) by dividing the brain salience by its bootstrap-estimate SE. BSR is akin to  $z$  score (2.0 corresponds to approximately a 95% confidence interval) but is interpreted in terms of the reliability of the parameter rather than null hypothesis testing. Confidence intervals were calculated around design/behavior salience using the percentiles derived from the sampling distribution.

## Results

### Outcome measures

Our PCA of background and outcome variables identified the following two factors: (1) TBI Symptoms and (2)





**Figure 2.** A group-comparison PLS distinguished the SC of CT/MRI-positive and CT/MRI-negative patients from comparison participants. **A–F**, The first latent variable ( $p < 0.0001$ , 67% covariance, singular value = 0.19) shows differentiation of CT/MRI-positive patients from the comparison participants (**A–C**), while the second latent variable ( $p = 0.016$ , 33% covariance, singular value = 0.13) differentiated CT/MRI-negative patients from the comparison participants (**D–F**). **A, D**, Violin plots show the distribution of brain scores for each group. Brain scores indicate the degree to which participants express the pattern of SC shown in **B** and **E**. Error bars are bootstrap-estimated 95% confidence intervals. **B, E**, Bootstrap ratios, which are a linear combination of SC weighted by how strongly they contribute to the latent variable are shown. Bootstrap ratios may be interpreted similar to z scores ( $>2.0$ , akin to  $p < 0.05$ ), so regions with bars exceeding the dashed line may be considered to reliably contribute to the latent variable. **C, F**, Regional inhibitory connection strength bootstrap ratios that reliably contribute to the latent variable ( $>2$ ) from **B** and **E** projected onto a brain.

Age and Cognition (Table 5), consistent with a previously reported PCA of neuropsychological outcome variables in mTBI patients (Levin et al., 2013). The CT/MRI subgroups did not significantly differ on the TBI Symptoms factor ( $t_{(34)} = 0.73$ ,  $p = 0.47$ ) or the Age and Cognition factor ( $t_{(34)} = 0.30$ ,  $p = 0.76$ ). We also tested for group differences on the individual variables contributing to both factors. We found that the CT/MRI-positive patients were significantly older than the CT/MRI-negative patients ( $t_{(42)} = -2.5$ ,  $p < 0.01$ ) and comparison participants ( $t_{(48)} = 4.3$ ,  $p \leq 0.01$ ). The CT/MRI-negative patients were also significantly older than the comparison participants ( $t_{(64)} = 2.2$ ,  $p = 0.03$ ). A  $\chi^2$  test of independence indicated that the CT/MRI-positive patients experienced a greater loss of consciousness than the CT/MRI-negative patients ( $\chi(1)^2 = 8.6$ ,  $p = 0.01$ ). There were no other significant differences between groups ( $p > 0.05$ ; Table 1).

### Empirical brain differences between patient subgroups and comparison participants

#### Structural connectivity

A group comparison PLS assessed potential differences in SC weights between the CT/MRI patient subgroups and comparison participants. The first latent variable ( $p < 0.0001$ , 67% covariance, singular value = 0.19) distinguished the CT/MRI-positive patients from comparison participants (Fig.

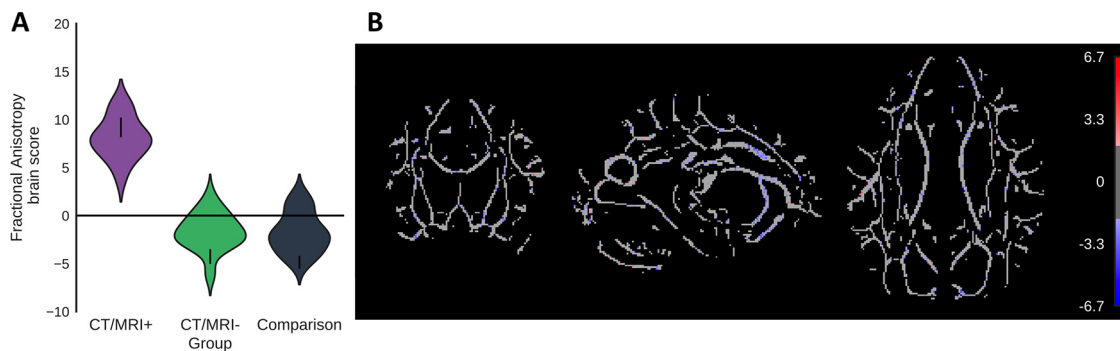
2A–C), indicating that CT/MRI-positive patients had lower SC weights relative to the comparison participants in many voxels, indicating a global effect. The second latent variable ( $p = 0.016$ , 33% covariance, singular value = 0.13) distinguished CT/MRI-negative patients from comparison participants (Fig. 2D–F) showing that the CT/MRI-negative patients also had primarily lower SC than comparison participants especially in connections involving occipital regions. These analyses were repeated with age regressed from the SC values, and the results did not change appreciably.

#### Functional connectivity and functional connectivity dynamics

A group comparison PLS comparing functional connectivity across the CT/MRI patient subgroups and comparison participants did not find any significant differences ( $p = 0.58$ , 61.7% covariance, singular value = 3.1). A one-way ANOVA did not discriminate the patient groups or comparison subjects on the variance of their FCD matrices ( $F_{(2,77)} = 0.1$ ,  $p = 0.91$ ). These analyses were repeated with age regressed from the FC values, and the results did not change appreciably.

#### Fractional anisotropy

A group comparison PLS compared fractional anisotropy across the whole-brain white matter skeleton (Fig. 3). The first latent variable ( $p = 0.01$ , 65.1% covariance,



**Figure 3.** A group-comparison PLS distinguished the CT/MRI-positive and CT/MRI-negative patients from comparison participants via their fractional anisotropy. **A, B.** The first latent variable ( $p = 0.01$ , 65% covariance, singular value = 8.2) that distinguished CT/MRI-positive patients from the comparison participants. **A.** Violin plot shows the distribution of brain scores for each group. Brain scores indicate the degree to which participants express the pattern fractional anisotropy shown in **B.** Error bars are bootstrap-estimated 95% confidence intervals. **B.** Bootstrap ratios, which are a linear combination of voxelwise fractional anisotropy weighted by how strongly they contribute to the latent variable. Bootstrap ratios are superimposed onto a white matter skeleton. Bootstrap ratios may be interpreted similar to z scores ( $>2.0$ , akin to  $p < 0.05$ ), so only voxels with bootstrap ratios  $>2$  are illustrated.

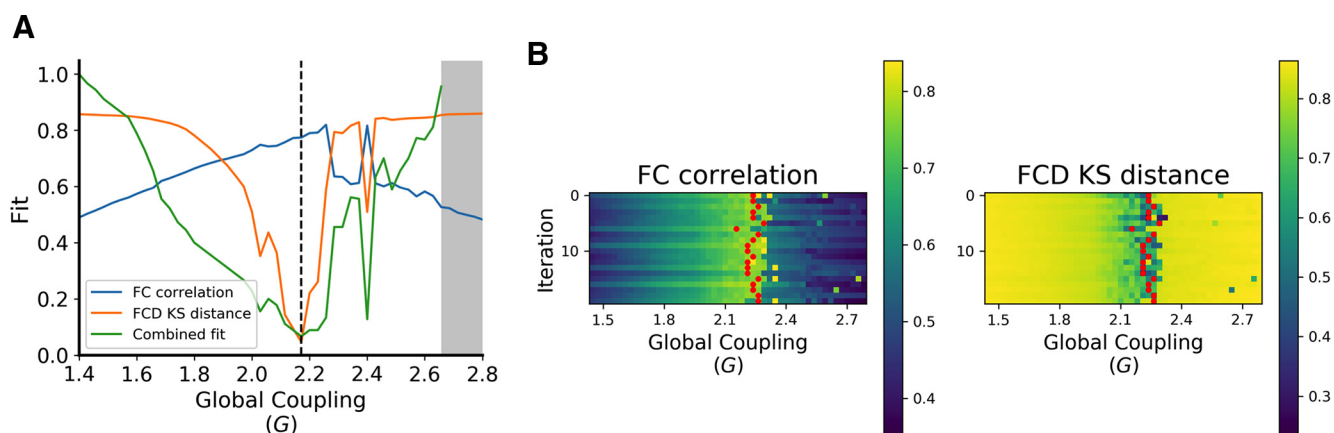
singular value = 8.2) showed that CT/MRI-positive patients had lower FA values than the comparison group, especially in the left cingulum and anterior corona radiata. The second latent variable indicated that CT/MRI-negative patients had primarily lower FA values than comparison participants, though they did not reach significance ( $p = 0.09$ , 34.9% covariance, singular value = 6.0). These analyses were repeated with age regressed from the FA values, and the results did not change meaningfully.

### TVB model fitting

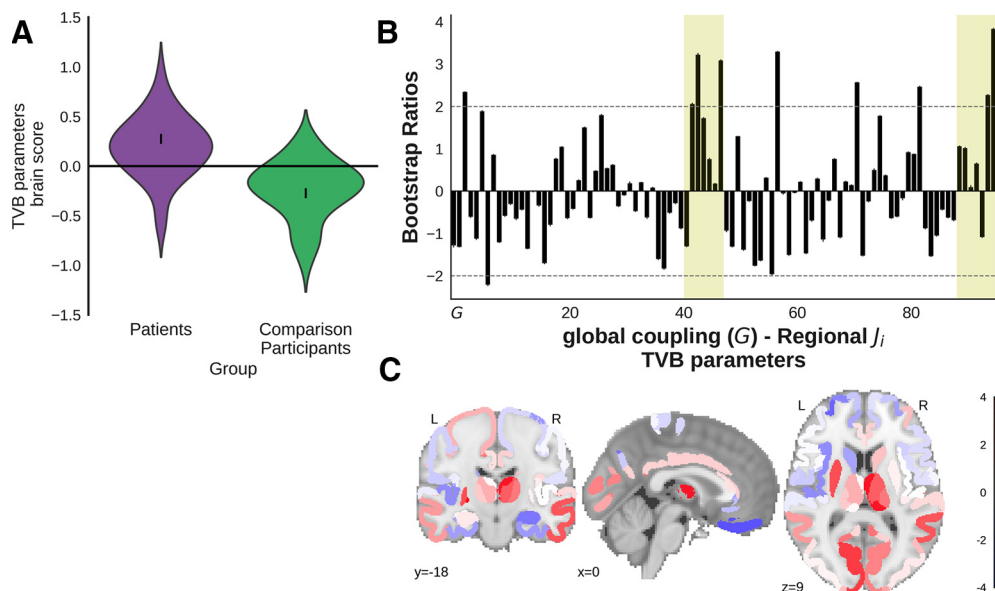
All patients and comparison participants showed good fits between empirical and simulated resting-state fMRI, as assessed by high uncentered Pearson's correlation of FC and low Kolmogorov–Smirnov distance between FCD

matrices. The simulated FC and FCD matrices of all participants were inspected visually to ensure that they appeared as reasonable FC/FCD matrices qualitatively. We also screened for outliers by converting the FC and FCD fits to the z score, finding no participants with a z-scored FC fit lower than  $-3$  (minimum =  $-2.4$ ) and no participants with a z-scored FCD fit  $>3$  (maximum = 2.6). There were no significant differences among the three groups on the fitting metrics (Table 5).

The parameter search space showed steady improvements in fit (increased FC correlation and decreased FCD Kolmogorov–Smirnov distance) as global coupling was increased until a best-fitting global coupling value was reached (Fig. 4). After this point, the model becomes multistable and eventually the FIC tuning algorithm is no longer able to maintain biologically realistic firing rates of



**Figure 4.** Summary of modeling fitting procedure. **A.** The parameter space exploration map for a representative subject given a single iteration. The gray area denotes values of global coupling for which the model fails to converge because it becomes hyperexcited. The black dashed line represents the optimal value of global coupling. Note that combined fit (green) is defined by the sum of the FC and FCD fits ranked across all other values of global coupling at which the model converged. **B.** The full-parameter space results for the same representative subject. Each grid shows model fits across all values of  $G$  on the x-axis, and iterations with randomized initial conditions on the y-axis. On the left, fits are defined by the uncentered correlation of the upper triangle of the empirical and simulated FC matrices. On the right, Kolmogorov–Smirnov (KS) distance between the upper triangles of the empirical and simulated FCD matrices defines fits. The red dots represent the optimal fit for each iteration.



**Figure 5.** Group comparison PLS of TVB parameters ( $G$  and regional inhibitory connection strengths) across patients (combined CT/MRI-positive and CT/MRI-negative subgroups) and comparison participants ( $p = 0.026$ , singular value = 0.30). Patients showed mostly higher inhibitory connection strength relative to comparison participants, particularly in the subcortical regions. **A**, The violin plot shows the distribution of brain scores for each group. Brain scores indicate the degree to which participants express the pattern of global coupling and regional local inhibitory connection strength shown in **B**. Error bars are bootstrap-estimated 95% confidence intervals. **B**, Bootstrap ratios, which are a linear combination of global coupling and regional local inhibitory connection strength weighted by how strongly they contribute to the latent variable. Bootstrap ratios may be interpreted similar to z scores ( $>2.0$ , akin to  $p < 0.05$ ), so regions with bars exceeding the dashed line may be considered to reliably contribute to the latent variable. Error bars are 1 SE. Bars representing subcortical regions are shaded. **C**, Regional inhibitory connection strength bootstrap ratios from **B** projected onto a glass brain.

~3 Hz. Across multiple iterations, our model showed acceptable consistency in choosing the optimal value of global coupling across iterations (Fig. 4, Table 6).

### TVB model group differences

#### Combined TBI patients versus comparison subjects

A group comparison PLS compared the TVB parameters (global coupling and regional inhibitory connection strengths) of the comparison participants ( $n = 36$ ) and the combined CT/MRI-positive and CT/MRI-negative patient groups ( $n = 44$ ). A significant latent variable ( $p = 0.026$ , singular value = 0.30; Fig. 5) distinguished the groups, showing that the TBI patients had primarily higher inhibitory connection strengths, especially in bilateral subcortical regions. Regions that were reliably contributing (bootstrap ratio,  $>2$ ) to the relationship included the bilateral pallidum, a right thalamic ROI with major temporal connections and right thalamic ROI with major frontal connections, right superior temporal cortex, left inferior cortex, and left putamen. The results were not significantly affected when age was regressed from the variables and the analysis repeated.

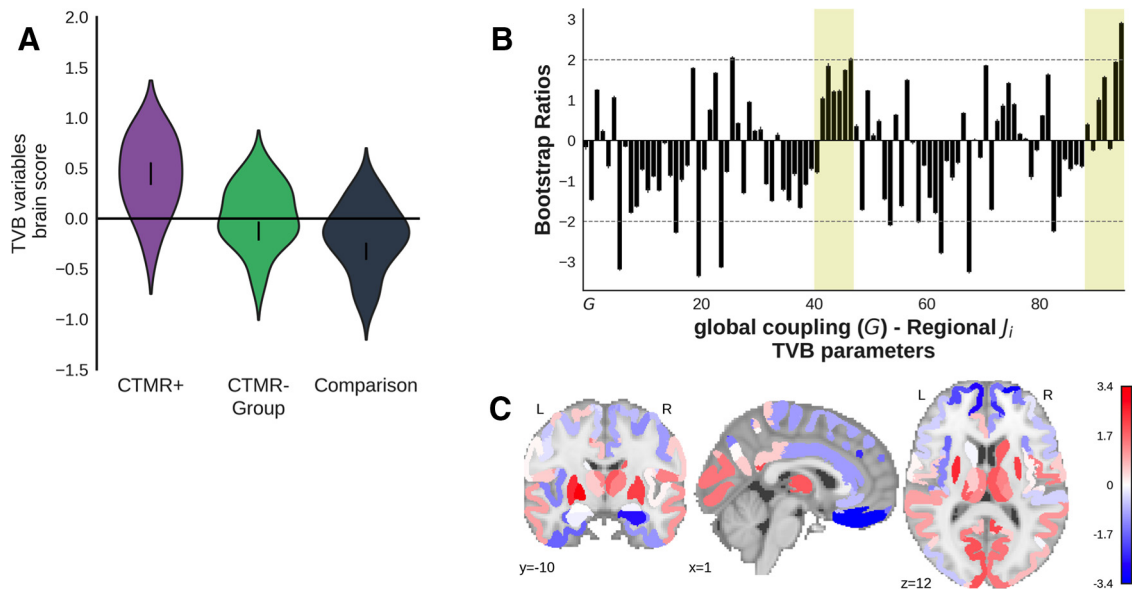
#### CT/MRI-positive and CT/MRI-negative patients versus comparison participants

A group comparison PLS compared the TVB parameters (global coupling and regional inhibitory connection strengths) of the CT/MRI-positive patients ( $n = 14$ ), CT/MRI-negative patients ( $n = 30$ ), and comparison participants

( $n = 36$ ). The first significant latent variable ( $p = 0.03$ , 70.9% covariance, singular value = 0.43; Fig. 6A–C) distinguished the CT/MRI-positive patients from comparison participants, showing that they had primarily lower cortical and higher subcortical inhibitory connection strengths relative to the comparison subjects. Regions reliably lower in CT/MRI-positive patients compared with comparison participants (bootstrap ratio, less than  $-2$ ) included the left dorsomedial prefrontal cortex, left medial prefrontal cortex, left prefrontal polar cortex, left anterior insula, right centrolateral prefrontal cortex, right medial prefrontal cortex, and right orbitoinferior prefrontal cortex. On the other hand, the left/right pallidum were reliably higher in CT/MRI-positive patients relative to comparison participants. The dot product of the brain salience vector from the first latent variable (Fig. 6) and the brain salience vector from the group comparison PLS comparing the combined patients from comparison subjects (Fig. 5) was high ( $r = 0.77$ ), indicating that the CT/MRI-positive patients were likely largely responsible for driving the group difference. These analyses were repeated with age regressed from the TVB parameters, and the results did not change meaningfully.

### TVB-behavior relationships

A behavioral PLS analysis compared the correlations between the TVB parameters and the TBI Symptoms and



**Figure 6.** Group-comparison PLS of TVB parameters ( $G$  and regional inhibitory connection strengths) across CT/MRI-positive patients, CT/MRI-negative patients, and comparison participants. **A–C**, The first latent variable ( $p=0.03$ , 70.9% covariance, singular value=0.43) that differentiated CT/MRI-positive patients from comparison participants. **A**, Violin plot shows the distribution of brain scores for each group. Brain scores indicate the degree to which participants express the pattern of global coupling and regional local inhibitory connection strength shown in **B**. Error bars are bootstrap-estimated 95% confidence intervals. **B**, Bootstrap ratios, which are a linear combination of global coupling and regional local inhibitory connection strength weighted by how strongly they contribute to the latent variable. Bootstrap ratios may be interpreted similar to  $z$  scores ( $>2.0$ , akin to  $p < 0.05$ ), so regions with bars exceeding the dashed line may be considered to reliably contribute to the latent variable. Error bars are 1 SE. Bars representing subcortical regions are shaded. **C**, Regional inhibitory connection strength bootstrap ratios from **B** projected onto a brain.

Age and Cognition factors in all of the patients ( $N=36$ ). The analysis showed higher scores on the TBI Symptoms (indicating more symptoms) and Age and Cognition (indicating older age and poorer cognitive performance) factors were related to primarily lower regional inhibitory connection strength ( $p=0.02$ , 74% covariance, singular value=2.4; Fig. 7). Regions reliably contributing to the latent variable (bootstrap ratios, less than  $-2$ ) included the left/right gustatory cortex, the left caudate nucleus, secondary auditory cortex, primary visual cortex, hippocampus, orbitomedial prefrontal cortex, anterior insula, and temporal polar cortex, as well as the right frontal eye field, ventral temporal cortex, anterior visual area (ventral part), ventrolateral premotor cortex, gustatory cortex, and inferior temporal cortex.

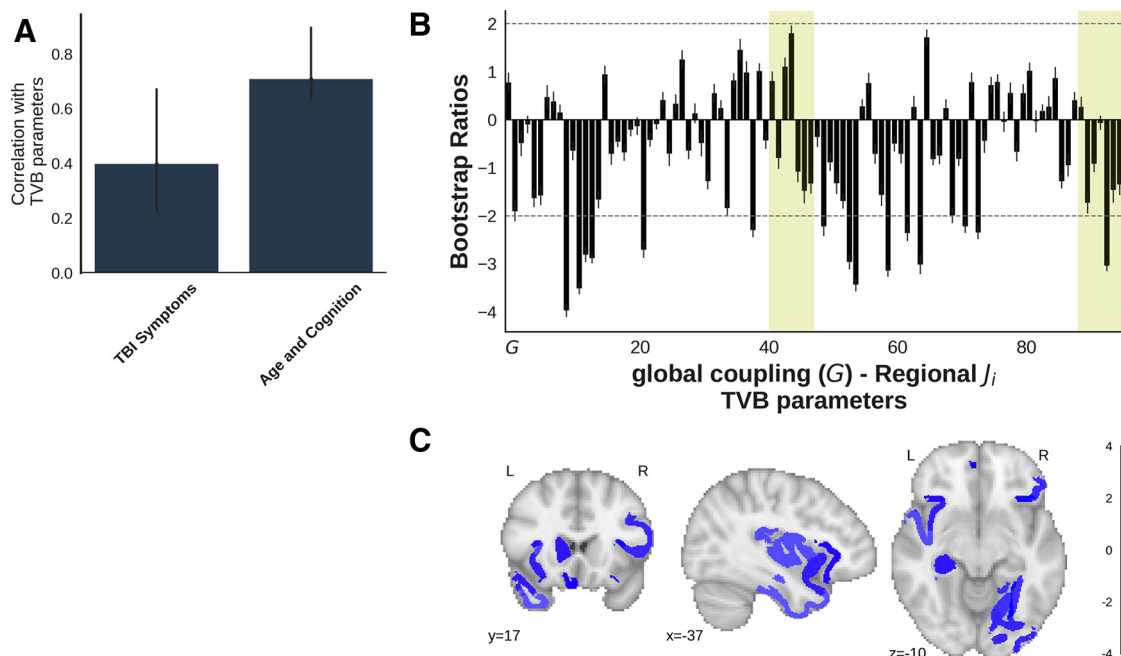
Within-group PLS models were calculated to determine the contributions of the CT/MRI-positive and CT/MRI-negative groups to the omnibus test shown in Figure 8. Both PLS analyses compared TBI Symptoms and Age and Cognition factor scores to the TVB parameters (global coupling and regional inhibitory connection strength) using either the CT/MRI-positive or CT/MRI-negative patients. The within-CT/MRI-negative behavioral PLS produced a single significant latent variable ( $n=25$ ;  $p=0.005$ , 73.1% covariance, singular value=3.0; Fig. 8A–C), indicating that higher TBI Symptoms and Age and Cognition scores were related to lower inhibitory connection strength. Regions reliably contributing to the latent variable (bootstrap ratios, less than  $-2$ ) included the right temporal polar cortex, orbitomedial prefrontal cortex,

parahippocampal cortex, anterior visual area, ventral temporal cortex, and frontal eye field, as well as the left anterior insula, orbitomedial prefrontal cortex, hippocampus, frontal eye field, dorsolateral prefrontal cortex, and caudate nucleus. The left subgenual cingulate gyrus showed the inverse association with the factor scores compared with the other regions (bootstrap ratio,  $>2$ ). The same analysis within the CT/MRI-positive group did not produce a significant latent variable ( $n=11$ ,  $p=0.11$ , 67.6% covariance, singular value=3.7; Fig. 8D–F). We calculated the dot product of the brain salience vectors from the combined group PLS model (Fig. 7) and the two within-group analyses (Fig. 8) to determine which subgroup was responsible for driving the effect observed when groups were combined. The dot product between the combined model and the CT/MRI-negative model was very high ( $r=0.90$ ). The same dot product was significantly lower ( $r=-0.43$ ) between the combined model and the CT/MRI-positive group ( $z=4.68$ ,  $p < 0.0001$ ), suggesting that the CT/MRI-negative group was primarily responsible for the observed associations between TBI Symptoms and Age and Cognition factor scores and regional inhibitory connection strengths.

## Discussion

### Overview

Concussion outcomes are variable and difficult to predict. Few studies have looked longitudinally at patients with well characterized acute-phase and chronic-phase



**Figure 7.** A behavioral PLS analysis assessed the associations between the TBI Symptoms and Age and Cognition factors and TVB parameters (global coupling and regional inhibitory connection strengths) in the patients (combined CT/MRI-positive and CT/MRI-negative subgroups). The first significant variable is illustrated ( $p = 0.02$ , 74% covariance, singular value = 2.4) **A**, The bars represent the correlation between each factor and the pattern of TVB parameters shown in the corresponding bar graph in **B**. The error bars represent 95% confidence intervals, so the error bars of variables significantly contributing to the latent variable do not cross zero. **B**, Bootstrap ratios, which are a linear combination of global coupling and regional local inhibitory connection strength weighted by how strongly they contribute to the latent variable. Bootstrap ratios may be interpreted similar to z scores ( $>2.0$ , akin to  $p < 0.05$ ), so regions with bars exceeding the dashed line may be considered to reliably contribute to the latent variable. Error bars are 1 SE. Bars representing subcortical regions are shaded. **C**, Regional inhibitory connection strength bootstrap ratios from **B** that reliably contribute to the latent variable ( $>2$ ) projected onto a brain.

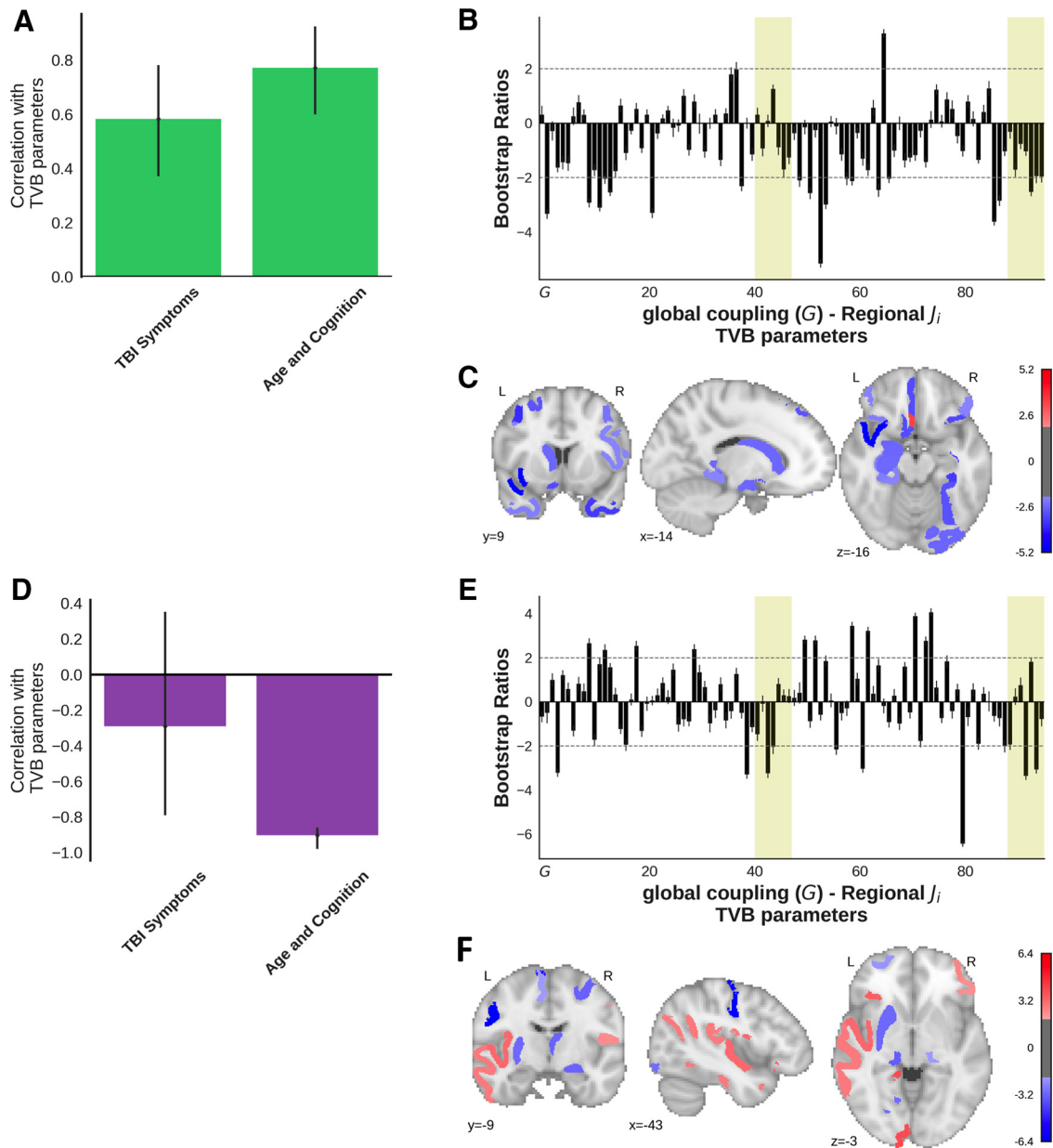
assessments, and fewer still have combined multimodal imaging with a computational approach. Here we combined the strengths of a well characterized sample with multimodal imaging and computational approaches to reveal relationships between local neural dynamics and chronic patient outcomes. We found that the CT/MRI-positive TBI patients showed lower cortical, but higher subcortical, inhibitory connection strengths relative to the comparison participants. We did not distinguish CT/MRI-negative patients from the comparison participants based on their TVB parameters; however, lower regional inhibitory connection strengths were related to higher scores on the TBI Symptoms and Age and Cognition factors assessed 6 months postinjury in these patients. Together, our results show proof of concept that local brain dynamics modeled in TVB are sensitive to semiacute TBI pathology and predictive of chronic outcomes.

### Group comparisons

The CT/MRI-positive patients displayed higher subcortical, but lower cortical, inhibitory connection strengths relative to the comparison participants. We speculate that lower inhibitory connection strength may reflect excitotoxicity or inhibitory dysregulation, which are known to play a role in secondary injury after TBI (Yi and Hazell, 2006; Van Horn et al., 2017). Indeed, a study of tumor

patients (Aerts et al., 2018) that used a model similar to our own demonstrated reduced inhibitory connection strength in tumor regions relative to comparison participants, which they posited to reflect the role of excitotoxicity in the pathogenesis of glaucoma (Casson, 2006). Aerts et al. (2018) also observed increased inhibitory connection strengths in the nontumor regions of their patients compared with controls, paralleling the increased inhibitory connection strengths we observed in the subcortical regions of the CT/MRI-positive patients compared with comparison participants. Higher subcortical inhibitory connection strengths may reflect a distal effect of small cortical lesions or serve a protective function, as CT/MRI-positive patients did not score more highly than CT/MRI-negative patients on the TBI Symptoms factor. Future studies using neuroimaging with finer spatial resolution could quantitatively assess the sensitivity of the regional inhibitory connection strength parameter of our model to the cellular processes underlying changes to excitation/inhibition caused by TBI.

The CT/MRI-negative patients were not significantly differentiated from the comparison participants by their TVB parameters. This was unexpected as a study of mTBI patients experiencing active PCS symptoms (who were screened for focal lesions) found decreased inhibitory connection strengths relative to comparison participants (Good T, McIntosh AR, Levine B, unpublished



**Figure 8. A–F,** Within-group behavioral PLS analyses show the relationships between the TBI Symptoms and Age and Cognition factor scores and the TVB parameters ( $G$  and regional inhibitory connection strengths) for the CT/MRI-negative (**A–C**) and CT/MRI-positive patients (**D–F**). **A–C** show the first latent variable ( $p = 0.005$ , 73.1% covariance, singular value = 3.0) for the within CT/MRI-negative patients, while **D–F** illustrate the first latent variable ( $p = 0.11$ , 67.6% covariance, singular value = 3.7) for the CT/MRI-positive patients. **A, D,** The bars represent the correlation between each factor with the pattern of TVB parameters shown in the corresponding bar graph **B**. The error bars represent 95% confidence intervals, so the error bars of variables significantly contributing to the latent variable do not cross zero. **B** and **E** show bootstrap ratios, which are a linear combination of global coupling and regional local inhibitory connection strength weighted by how strongly they contribute to the latent variable. Bootstrap ratios may be interpreted similar to z scores ( $>2.0$ , akin to  $p < 0.05$ ), so regions with bars exceeding the dashed line may be considered to reliably contribute to the latent variable. Error bars are 1 SE. Bars representing subcortical regions are shaded. **C, F,** Regional inhibitory connection strength bootstrap ratios that reliably contribute to the latent variable ( $>2$ ) from **B** and **E** projected onto a brain.

observations). Notably, the present work investigates TBI patients scanned 1–2 weeks postinjury, while the other study considers patients in the chronic phase postinjury, which may contribute to the discrepant findings. It is also possible that other factors obfuscated a potential group difference between CT/MRI-negative patients and

comparison participants. For example, a history of substance abuse and other neuropsychiatric disorders, such as depression, were not exclusion criteria in the present study despite exerting effects via excitotoxicity (Miller et al., 2009; Walker and Dantzer, 2014), similar to mTBI. While this feature of our data increases the

generalizability of our findings, it may also have limited our sensitivity to pathophysiology caused by TBI.

Our empirical SC and FA findings suggested the CT/MRI-positive and CT/MRI-negative patients were characterized by more disconnected structural connectomes than the comparison participants. These results are in line with a previous study of the white matter integrity of an overlapping patient sample (Yuh et al., 2014). In addition, previous studies of humans (Imms et al., 2019; Kuceyeski et al., 2019) and animals (Meningher et al., 2020) have found that the SCs of TBI patients are more highly segregated than those of control subjects. Modeling studies suggest that structural disconnection in TBI patients produces reduced metastability, which is linked to excitation–inhibition imbalance (Hellyer et al., 2015). Similarly, the CT/MRI-positive patients demonstrated structural disconnection as well as altered local inhibitory dynamics compared with comparison participants.

When interpreting our findings, it should be considered that approximately one-third of our TBI sample (14 of 44 patients) showed signs of acute traumatic intracranial lesions on CT or MRI scans on presentation in the emergency department. This classification of CT/MRI-positive versus CT/MRI-negative may be contrasted with previous work considering “complicated” mTBI solely on the basis of a positive acute-phase CT scan (Iverson et al., 2012; Voormolen et al., 2019). Many of our CT/MRI-positive patients were classified on the basis of very subtle MRI lesions at 3 T, such as one or two subtle isolated foci of hemorrhagic axonal injury. These patients would likely be classified as uncomplicated if we had used CT alone. In fact, this nuance is supported by early work that found dwMRI evidence of white matter damage in patients classified as uncomplicated by CT scan alone (Arfanakis et al., 2002; Bazarian et al., 2007; Chu et al., 2010).

### TVB–behavior relationships

Lower inhibitory connection strengths were associated with higher scores on the TBI Symptoms and Age and Cognition factors in the CT/MRI-negative group. The effect included many regions, including cortical and subcortical structures, and indicated that lower inhibitory connection strengths were related to more severe TBI outcomes, older age, less education, and lower cognitive performance. This effect is aligned with other large-scale modeling work that showed structural disconnection associated with decreased metastability, indicating excitation–inhibition imbalance, to be related to poorer cognitive performance in TBI patients (Hellyer et al., 2015). Empirical studies using MRS have also found that elevated concentrations of the neuromodulatory factor glutamate during the semiacute phase were predictive of poorer chronic outcomes (Shutter et al., 2004; Eisele et al., 2020).

In the CT/MRI-positive patients we did not observe a correlation between inhibitory connection strengths and the TBI Symptoms factor as expected. We suspect that this was because of a lack of statistical power ( $n = 11$ ) in the within-group behavioral PLS (Fig. 8D–F). Forthcoming large-scale longitudinal and multisite data

acquisitions [e.g., full Track-TBI LONG (<https://tracktbi.ucsf.edu/>) sample] will be better equipped to establish robust correlations between parameters from brain network models and chronic TBI outcome.

### Limitations and conclusions

We note that our study is limited by its modest sample size and the lack of longitudinal imaging data to track recovery. Our exploratory findings will need to be confirmed in larger independent samples. Specifically, future studies should test whether a lower inhibitory connection strength is indeed predictive of the development of persistent postconcussion symptoms. Additionally, we acknowledge the lack of racial diversity (79% white) and the gender imbalance (65% male) of our patients. Our sample, obtained by an emergency department convenience sample, will limit the generalizability of our findings to more mild concussions that do not require hospitalization. Our choice of a relatively coarse (96 ROIs) parcellation scheme may have also limited sensitivity. Future work should explore the effect of multiple parcellation schemes on modeling results. Similarly, future work with larger sample sizes may allow for subtyping moderate to severe TBI patients by lesion type and location, which would allow for greater power in detecting changes to local network dynamics. Regarding our network model, we acknowledge that a mechanistic interpretation may not be possible as multiple processes at the micro level may contribute to similar observations at the macro level. For example, local excitatory connection strengths may produce dynamics similar as those observed through variations to recurrent inhibitory connection strengths. We did not vary local excitatory connection strengths in our parameter space exploration to ensure that the model remained identifiable.

In conclusion, we used large-scale brain modeling to detect differences in local inhibitory connection strengths among CT/MRI-positive TBI patients in the semiacute phase and comparison participants. We did not distinguish semiacute CT/MRI-negative patients from the comparison participants based on their inhibitory connection strengths; however, lower inhibitory connection strengths were associated with more severe clinical outcomes, older age, and poorer cognitive performance at a 6 month follow-up in these patients. The result suggests large-scale connectome-based models may be sensitive to pathophysiological changes in semi-acute phase TBI patients and predictive of their chronic outcomes.

### References

- Aerts H, Schirner M, Jeurissen B, Van Roost D, Achten E, Ritter P, Marinazzo D (2018) Modeling brain dynamics in brain tumor patients using The Virtual Brain. *Eneuro* 5:ENEURO.0083-18.2018.
- Arfanakis K, Haughton VM, Carew JD, Rogers BP, Dempsey RJ, Meyerand ME (2002) Diffusion tensor MR imaging in diffuse axonal injury. *AJNR Am J Neuroradiol* 23:794–802.
- Avants BB, Tustison NJ, Song G, Cook PA, Klein A, Gee C (2011) A Reproducible evaluation of ANTs similarity metric performance in brain image registration. *Neuroimage* 54:2033–2044.

- Bazarian JJ, Zhong J, Blyth B, Zhu T, Kavcic V, Peterson D (2007) Diffusion tensor imaging detects clinically important axonal damage after mild traumatic brain injury: a pilot study. *J Neurotrauma* 24:1447–1459.
- Bezgin G, Solodkin A, Bakker R, Ritter P, McIntosh AR (2017) Mapping complementary features of cross-species structural connectivity to construct realistic “virtual brains”. *Hum Brain Mapp* 38:2080–2093.
- Breakspear M (2017) Dynamic models of large-scale brain activity. *Nat Neurosci* 20:340–352.
- Casson RJ (2006) Possible role of excitotoxicity in the pathogenesis of glaucoma. *Clin Exp Ophthalmol* 34:54–63.
- Chu Z, Wilde EA, Hunter JV, McCauley SR, Bigler ED, Troyanskaya M, Yallampalli R, Chia JM, Levin HS (2010) Voxel-based analysis of diffusion tensor imaging in mild traumatic brain injury in adolescents. *AJNR Am J Neuroradiol* 31:340–346.
- Dabek FJ, Caban JJ (2016) A K-reversible approach to model clinical trajectories. In: American Medical Informatics 2016 annual symposium: nurses lead, discover, educate, and collaborate, pp 460–469. Bethesda, MD: American Medical Informatics Association.
- Deco G, Hugues E (2012) Neural network mechanisms underlying stimulus driven variability reduction. *PLoS Comput Biol* 8: e1002395.
- Deco G, Ponce-Alvarez A, Hagmann P, Romani G, Mantini D, Corbetta M (2014a) How local excitation-inhibition ratio impacts the whole brain dynamics. *J Neurosci* 34:7886–7898.
- Deco G, McIntosh AR, Shen K, Hutchison RM, Menon RS, Everling S, Hagmann P, Jirsa VK (2014b) Identification of optimal structural connectivity using functional connectivity and neural modeling. *J Neurosci* 34:7910–7916.
- Deco G, Tononi G, Boly M, Kringelbach ML (2015) Rethinking segregation and integration: contributions of whole-brain modelling. *Nat Rev Neurosci* 16:430–439.
- Deco G, Kringelbach ML, Jirsa VK, Ritter P (2017) The dynamics of resting fluctuations in the brain: metastability and its dynamical cortical core. *Sci Rep* 7:3095.
- Delis DC, Kramer JH, Kaplan E, Ober BA (2000) California Verbal Learning Test - second edition. Adult version. San Antonio, TX: Manual Psychological Corporation.
- Derogatis LR, Melisaratos N (1983) The brief symptom inventory: an introductory report. *Psychol Med* 13:595–605.
- Diener E, Emmons RA, Larsen RJ, Griffin S (1985) The satisfaction with life scale. *J Pers Assess* 49:71–75.
- Douglas DB, Iv M, Douglas PK, Anderson A, Vos SB, Bammer R, Zeineh M, Wintermark M (2015) Diffusion tensor imaging of TBI: potentials and challenges. *Top Magn Reson Imaging* 24:241–251.
- Eisele A, Hill-Strathy MJ, Michels L, Rauhen K (2020) Magnetic resonance spectroscopy following mild traumatic brain injury: a systematic review and meta-analysis on the potential to detect posttraumatic neurodegeneration. *Neurodegener Dis* 20:2–11.
- Falcon MI, Riley JD, Jirsa V, McIntosh AR, Elinor Chen E, Solodkin A (2016) Functional mechanisms of recovery after chronic stroke: modeling with The Virtual Brain. *Eneuro* 3:ENEURO.0158-15.2016.
- Filley CM, Kelly JP (2018) White matter and cognition in traumatic brain injury. *J Alzheimers Dis* 65:345–362.
- Friston KJ, Mechelli A, Turner R, Price CJ (2000) Nonlinear responses in fMRI: the balloon model, volterra kernels, and other hemodynamics. *NeuroImage* 12:466–477.
- Giza CC, Hovda DA (2015) The new neurometabolic cascade of concussion. *Neurosurgery* 75:S24–S33.
- Hayes JP, Bigler ED, Verfaellie M (2016) Traumatic brain injury as a disorder of brain connectivity. *J Int Neuropsychol Soc* 22:120–137.
- Hellyer PJ, Scott G, Shanahan M, Sharp DJ, Leech R (2015) Cognitive flexibility through metastable neural dynamics is disrupted by damage to the structural connectome. *J Neurosci* 35:9050–9063.
- Hou W, Sours Rhodes C, Jiang L, Roys S, Zhuo J, Jaja J, Gullapalli RP (2019) Dynamic functional network analysis in mild traumatic brain injury. *Brain Connect* 9:475–487.
- Imms P, Clemente A, Cook M, D’Souza W, Wilson PH, Jones DK, Caeyenberghs K (2019) The structural connectome in traumatic brain injury: a meta-analysis of graph metrics. *Neurosci Biobehav Rev* 99:128–137.
- Iverson GL, Lange RT, Wäljas M, Liimatainen S, Dastidar P, Hartikainen KM, Soimakallio S, Öhman J (2012) Outcome from complicated versus uncomplicated mild traumatic brain injury. *Rehabil Res Pract* 2012:415740.
- Jenkinson M, Bannister P, Brady M, Smith S (2002) Improved optimization for the robust and accurate linear registration and motion correction of brain images. *Neuroimage* 17:825–841.
- Jirsa VK, Sporns O, Breakspear M, Deco G, McIntosh AR (2010) Towards The Virtual Brain: network modeling of the intact and the damaged brain. *Arch Ital Biol* 148:189–205.
- Jirsa VK, Proix T, Perdakis D, Woodman MM, Wang H, Gonzalez-Martinez J, Bernard C, Bénar C, Guye M, Chauvel P, Bartolomei F (2017) The Virtual Epileptic Patient: individualized whole-brain models of epilepsy spread. *Neuroimage* 145:377–388.
- Kenzie ES, Parks EL, Bigler ED, Wright DW, Lim MM, Chesnutt JC, Hawryluk GWJ, Gordon W, Wakeland W (2018) The dynamics of concussion: mapping pathophysiology, persistence, and recovery with causal-loop diagramming. *Front Neurol* 9:203.
- Kötter R, Wanke E (2005) Mapping brains without coordinates. *Philos Trans R Soc Lond B Biol Sci* 360:751–766.
- Krainin BM, Forsten RD, Kotwal RS, Lutz RH, Guskiewicz KM (2011) Mild traumatic brain injury literature review and proposed changes to classification. *J Spec Oper Med* 11:38–47.
- Kuceyeski AF, Jamison KW, Owen JP, Raj A, Mukherjee P (2019) Longitudinal increases in structural connectome segregation and functional connectome integration are associated with better recovery after mild TBI. *Hum Brain Mapp* 40:4441–4456.
- Levin HS, Li X, McCauley SR, Hanten G, Wilde EA, Swank P (2013) Neuropsychological outcome of mTBI: a principal component analysis approach. *J Neurotrauma* 30:625–632.
- Madhavan R, Joel SE, Mullick R, Cogsil T, Niogi SN, Tsiouris AJ, Mukherjee P, Masdeu JC, Marinelli L, Shetty T (2019) Longitudinal resting state functional connectivity predicts clinical outcome in mild traumatic brain injury. *J Neurotrauma* 36:650–660.
- Mayer AR, Ling JM, Allen EA, Klimaj SD, Yeo RA, Hanlon FM (2015) Static and dynamic intrinsic connectivity following mild traumatic brain injury. *J Neurotrauma* 32:1046–1055.
- McIntosh AR, Lobaugh NJ (2004) Partial least squares analysis of neuroimaging data: applications and advances. *NeuroImage* 23: S250–S263.
- McIntosh AR, Mišić B (2013) Multivariate statistical analyses for neuroimaging data. *Annu Rev Psychol* 64:499–525.
- McMahon P, Hricik A, Yue JK, Puccio AM, Inoue T, Lingsma HF, Beers SR, Gordon WA, Valadka AB, Manley GT, Okonkwo DO (2014) Symptomatology and functional outcome in mild traumatic brain injury: results from the prospective TRACK-TBI study. *J Neurotrauma* 31:26–33.
- Meningher I, Bernstein-Eliav M, Rubovitch V, Pick CG, Tavor I (2020) Alterations in network connectivity after traumatic brain injury in mice. *J Neurotrauma* 37:2169–2179.
- Miller AH, Maletic V, Raison CL (2009) Inflammation and its discontents: the role of cytokines in the pathophysiology of major depression. *Biol Psychiatry* 65:732–741.
- Niogi SN, Mukherjee P (2010) Diffusion tensor imaging of mild traumatic brain injury. *J Head Trauma Rehabil* 25:241–255.
- Palacios EM, Yuh EL, Chang Y-S, Yue JK, Schnyer DM, Okonkwo DO, Valadka AB, Gordon WA, Maas AIR, Vassar M, Manley GT, Mukherjee P (2017) Resting-state functional connectivity alterations associated with six-month outcomes in mild traumatic brain injury. *J Neurotrauma* 34:1546–1557.
- Palacios EM, Owen JP, Yuh EL, Wang MB, Vassar MJ, Ferguson AR, Diaz-Arrastia R, Giacino JT, Okonkwo DO, Robertson CS, Stein MB, Temkin N, Jain S, McCrea M, MacDonald CL, Levin HS, Manley GT, Mukherjee P (2020) The evolution of white matter microstructural changes after mild traumatic brain injury: a longitudinal DTI and NODDI study. *Sci Adv* 6:eaz6892.



- Ritter P, Schirner M, McIntosh AR, Jirsa VK (2013) The Virtual Brain integrates computational modeling and multimodal neuroimaging. *Brain Connect* 3:121–145.
- Roberts JA, Perry A, Roberts G, Mitchell PB, Breakspear M (2017) Consistency-based thresholding of the human connectome. *Neuroimage* 145:118–129.
- Roy D, Sigala R, Breakspear M, McIntosh AR, Jirsa VK, Deco G, Ritter P (2014) Using The Virtual Brain to reveal the role of oscillations and plasticity in shaping brain's dynamical landscape. *Brain Connect* 4:791–811.
- Sanz Leon P, Knock S. a, Woodman MM, Domide L, Mersmann J, McIntosh AR, Jirsa V (2013) The Virtual Brain: a simulator of primate brain network dynamics. *Front Neuroinform* 7:1–23.
- Schirner M, Rothmeier S, Jirsa VK, McIntosh AR, Ritter P (2015) An automated pipeline for constructing personalised virtual brains from multimodal neuroimaging data. *Neuroimage* 117:343–357.
- Schirner M, McIntosh AR, Jirsa V, Deco G (2018) Inferring multi-scale neural mechanisms with brain network modelling. *Elife* 7:e28927.
- Sharp DJ, Scott G, Leech R (2014) Network dysfunction after traumatic brain injury. *Nat Rev Neurol* 10:156–166.
- Shen K, Bezgin G, Hutchison RM, Gati JS, Menon RS, Everling S, McIntosh AR (2012) Information processing architecture of functionally defined clusters in the macaque cortex. *J Neurosci* 32:17465–17476.
- Shen K, Bezgin G, Schirner M, Ritter P, Everling S, McIntosh AR (2019a) A macaque connectome for large-scale network simulations in The Virtual Brain. *Sci Data* 6:123.
- Shen K, Goulas A, Grayson D, Eusebio J, Gati JS, Ravi S (2019b) Exploring the limits of network topology estimation using diffusion-based tractography and tracer studies in the macaque cortex. *Neuroimage* 191:81–92.
- Shenton ME, Hamoda HM, Schneiderman JS, Bouix S, Pasternak O, Rathi Y, Vu M-A, Purohit MP, Helmer K, Koerte I, Lin AP, Westin C-F, Kikinis R, Kubicki M, Stern RA, Zafonte R (2012) A review of magnetic resonance imaging and diffusion tensor imaging findings in mild traumatic brain injury. *Brain Imaging Behav* 6:137–192.
- Shutter L, Tong KA, Holshouser BA (2004) Proton MRS in acute traumatic brain injury: role for glutamate/glutamine and choline for outcome prediction. *J Neurotrauma* 21:1693–1705.
- Si B, Dumkrieger G, Wu T, Zafonte R, Valadka AB, Okonkwo DO, Manley GT, Wang L, Dodick DW, Schwedt TJ, Li J (2018) Subclassifying patients with mild traumatic brain injury: a clustering approach based on baseline clinical characteristics and 90-day and 180-day outcomes. *PLoS One* 13:e0198741.
- Tabachnick BG, Fidell LS (2001) *Using Multivariate Statistics*, Fourth Edition. Needham Heights, MA: Allyn & Bacon.
- Van Horn JD, Bhattarai A, Irimia A (2017) Multimodal imaging of neuro-metabolic pathology due to traumatic brain injury. *Trends Neurosci* 40:39–59.
- Vergara VM, Mayer AR, Kiehl KA, Calhoun VD (2018) Dynamic functional network connectivity discriminates mild traumatic brain injury through machine learning. *Neuroimage Clin* 19:30–37.
- Voormolen DC, Haagsma JA, Polinder S, Maas AIR, Steyerberg EW, Vuleković P, Sewalt CA, Gravesteyn BY, Covic A, Andelic N, Plass AM, von Steinbuechel N (2019) Post-concussion symptoms in complicated vs. uncomplicated mild traumatic brain injury patients at three and six months post-injury: results from the CENTER-TBI study. *J Clin Med* 8:1921.
- Walker AK, Dantzer R (2014) Is there a role for glutamate-mediated excitotoxicity in inflammation-induced depression? *J Neural Transm (Vienna)* 121:925–932.
- Wallace EJ, Mathias JL, Ward L (2018) The relationship between diffusion tensor imaging findings and cognitive outcomes following adult traumatic brain injury: a meta-analysis. *Neurosci Biobehav Rev* 92:93–103.
- Yi JH, Hazell AS (2006) Excitotoxic mechanisms and the role of astrocytic glutamate transporters in traumatic brain injury. *Neurochem Int* 48:394–403.
- Yue JK, Vassar MJ, Lingsma HF, Cooper SR, Okonkwo DO, Valadka AB, Gordon WA, Maas AIR, Mukherjee P, Yuh EL, Puccio AM, Schnyer DM, Manley GT (2013) Transforming research and clinical knowledge in traumatic brain injury pilot: multicenter implementation of the common data elements for traumatic brain injury. *J Neurotrauma* 30:1831–1844.
- Yuh EL, Cooper SR, Mukherjee P, Yue JK, Lingsma HF, Gordon WA, Valadka AB, Okonkwo DO, Schnyer DM, Vassar MJ, Maas AIR, Manley GT (2014) Diffusion tensor imaging for outcome prediction in mild traumatic brain injury: a TRACK-TBI study. *J Neurotrauma* 31:1457–1477.
- Zimmermann J, Perry A, Breakspear M, Schirner M, Sachdev P, Wen W, Kochan NA, Mapstone M, Ritter P, McIntosh AR, Solodkin A (2018) Differentiation of Alzheimer's disease based on local and global parameters in personalized Virtual Brain models. *Neuroimage Clin* 19:240–251.