

Cognition and Behavior

Toward Standardized Guidelines for Investigating Neural Circuit Control of Behavior in Animal Research

Alan S. Lewis,^{1,2} Erin S. Calipari,^{2,3,4} and Cody A. Siciliano^{2,3,4}<https://doi.org/10.1523/ENEURO.0498-20.2021>

¹Department of Psychiatry and Behavioral Sciences, Vanderbilt University Medical Center, Nashville, TN 37212, ²Vanderbilt Brain Institute, Vanderbilt University, Nashville, TN 37232, ³Department of Pharmacology, Vanderbilt University, Nashville, TN 37232, and ⁴Vanderbilt Center for Addiction Research, Vanderbilt University, Nashville, TN 37232

Abstract

With the advent of tools for recording and manipulating activity with high spatiotemporal resolution in defined neural circuits in behaving animals, behavioral neuroscience is now tasked with establishing field-wide standards for implementing and interpreting these powerful approaches. Theoretical frameworks for what constitute proof of fundamental neurobiological principles is an ongoing and frequently debated topic. On the other hand, standardizing interpretation of individual experimental findings to avoid spurious conclusions in practice has received less attention. Even within subfields, similar assays are often used to support widely disparate conclusions which in part has contributed to a slew of studies claiming highly specified functions for cell types and circuits which are often in direct disagreement with one another. In this opinion piece, we discuss common pitfalls in design and interpretation of approaches for recording or manipulating neural activity in animal models of motivated behavior. We emphasize the importance of integrating findings across multiple behavioral assays concomitant with tempered inference regarding specialized neuronal functions as a standardized starting point for parsing circuit control of behavior. Our aim is to stimulate an open and accessible discourse in the literature to address issues of continuity across behavioral neurosciences.

Key words: behavior; behavioral neuroscience; chemogenetics; circuits; *in vivo* imaging; optogenetics

Significance Statement

New technologies in neuroscience allow for increasingly precise recording and stimulation of neural circuits in animal research. The goal is to understand the function of the brain, as well as to develop new ways to treat brain diseases. Yet despite seemingly boundless technical potential, a key limitation for meaningful advances stems from spurious interpretation of experiments. Here, we provide specific examples from our own studies and discuss why appropriate interpretation of results can be challenging. We emphasize that standardizing interpretation of behavioral assays, as well as transferring incentives for identifying “specific” circuits to more objectively understanding a circuit’s role across varied behavioral domains, will facilitate assimilation across literatures and ultimately move behavioral neuroscience closer to its goals.

Introduction

Neuroscientists have never before enjoyed a more powerful repertoire of techniques to manipulate the *in vivo*

activity of cells and circuits in the experimental animal brain. These methods, which seem to advance in complexity and utility almost daily, enable precise observation or control of activity in identified cells using developmental, genetic, functional, and/or connectivity classifications.

Received November 17, 2021; accepted March 17, 2021; First published March 26, 2021.

The authors declare no competing financial interests.

Author contributions: A.S.L., E.S.C., and C.A.S. wrote the paper.

These techniques have overwhelmingly been used to relate the activity of a particular region, circuit, or cell-type to animal behavior. With these data, broad conclusions are often made claiming a highly specified role for circuits controlling certain aspects of behavior or encoding specific features of experience. While this is tempting and, on its surface, logical, a multitude of factors contribute to observed behavior, which means that manipulating any number of latent variables may alter a behavioral output in the same way. In this opinion piece, our goal is to reconcile the increasingly widespread use of *in vivo* manipulation techniques with the need for the field of behavioral neuroscience to establish greater standardization for labeling a manipulation as truly “specific.”

A Cautionary Anecdote

One of the authors recently conducted a series of studies to test the effects of mossy cells in the mouse ventral dentate gyrus on social isolation-induced aggression using the resident-intruder test, a commonly used assay for territorial aggression (Koolhaas et al., 2013). Ventral mossy cells were activated by expression of the designer receptor exclusively activated by designer drugs (DREADD) hM3DGq and systemic administration of 10 mg/kg of the DREADD ligand clozapine N-oxide (CNO; Armbruster et al., 2007; Roth, 2016). When compared with control mice expressing only the fluorophore mCherry, reduction in aggression was observed in hM3DGq-expressing mice, suggesting that ventral mossy cell activation causally inhibited aggression. However, examination of protein expression of the immediate early gene cFos following CNO administration showed not only the expected dense cFos expression in hM3DGq-expressing mossy cells, but also in non-hM3DGq-expressing granule cells and pyramidal neurons of CA3 and CA1 throughout the hippocampal formation, not seen in control conditions. This pattern of dense cFos expression is commonly observed in rodents following seizure induction (Chawla et al., 2005; Peng and Houser, 2005), and even subtle behavioral seizure induction from overactivation of the ventral dentate gyrus might explain reduced aggression. Indeed, careful review of videotaped behavioral assays confirmed mild behavioral seizures in a subset of mice during resident-intruder interactions. Thus, while our initial conclusion that ventral mossy cell activation was sufficient to reduce aggression in mice was logical based on our behavioral findings, our subsequent cFos and behavioral analysis suggested that (at least using 10 mg/kg

CNO) an intervening behavior, in this case myoclonus, likely was causal for aggression reduction.

This anecdote highlights a particularly important caveat of neural manipulation studies: a manipulation reducing or increasing a behavior in a single task is not sufficient to claim that circuit encodes a specific experience or is specific in controlling a behavior. For any of the individual tasks that we use in behavioral neuroscience there are many variables that can change task performance. Thus, it is critical that we describe data based on the effects that manipulations have on a given behavioral measure, rather than as generalizations focused on the information encoded within circuits without ruling out hidden variables and alternative explanations.

When Does Causality Matter?

The need to go beyond describing the effect of circuit manipulations as a function of how they alter a behavioral output depends on the ultimate goals of the researcher. Translational researchers whose motivation is to target and regulate behaviors of clinical importance might focus more on demonstrating “whether” a circuit manipulation influences a behavior and less on “why” and “how” it works. For instance, consider a hypothetical neural manipulation that reduces lever pressing for cocaine in rodents. The manipulation may influence attention, salience, pharmacodynamic, or motivational processes among many others, any one of which could reduce cocaine taking in preclinical behavioral assays (Fig. 1). If the equivalent neural manipulation in humans (for example, via pharmacological or brain stimulation methods) also reduces cocaine use in patients with cocaine use disorder, then the important question is not whether the manipulation is highly specific for cocaine taking, but rather whether any negative consequence of the manipulation outweigh the clinical benefit.

For experiments with the goal of using contemporary tools to precisely define the information encoded within a defined circuit, it is critical to consider how many variables might influence a given behavior. In the example above, there was no question that the manipulation reduced aggression, but it did so presumably because the behavior was interrupted by mild motor seizures rather than an isolated effect on aggression. During any behavioral task, salience, novelty, value, predictions, action initiation/motor responses, sensory information, and many other processes are simultaneously contributing to temporally-specific neuronal activity signatures around discrete behavioral events. Manipulating circuit activity to change how information is processed could alter behavior because of effects on any one or many of these factors. In fact, learning-theory models that provide a formalized framework for how organisms use information to make decisions show that the computations are flexible such that any given change in learning rate/performance could be achieved through many different distinct combinations of alterations in underlying variables (Rescorla et al., 1972; Sutton and Barto, 1987). Thus, assuming an experimental manipulation altered a given latent variable (perceived stimulus value or valence, for example) based on an observed change in learning rate is tenuous given that manipulation of other variables (e.g., perceived stimulus salience) could result in an identical change

This work was supported by National Institutes of Health Grants MH116339 (to A.S.L.), DA042111 and DA048931 (to E.S.C.), and DA045103 (to C.A.S.); the Brain and Behavior Research Foundation (E.S.C, C.A.S.); the Brain Research Foundation (C.A.S.); Alkermes Pharmaceuticals (C.A.S.); the Whitehall Foundation (E.S.C.); and the Edward Mallinckrodt Jr. Foundation (E.S.C.)

Correspondence should be addressed to Alan S. Lewis at alan.s.lewis@vumc.org.

<https://doi.org/10.1523/ENEURO.0498-20.2021>

Copyright © 2021 Lewis et al.

This is an open-access article distributed under the terms of the [Creative Commons Attribution 4.0 International license](https://creativecommons.org/licenses/by/4.0/), which permits unrestricted use, distribution and reproduction in any medium provided that the original work is properly attributed.

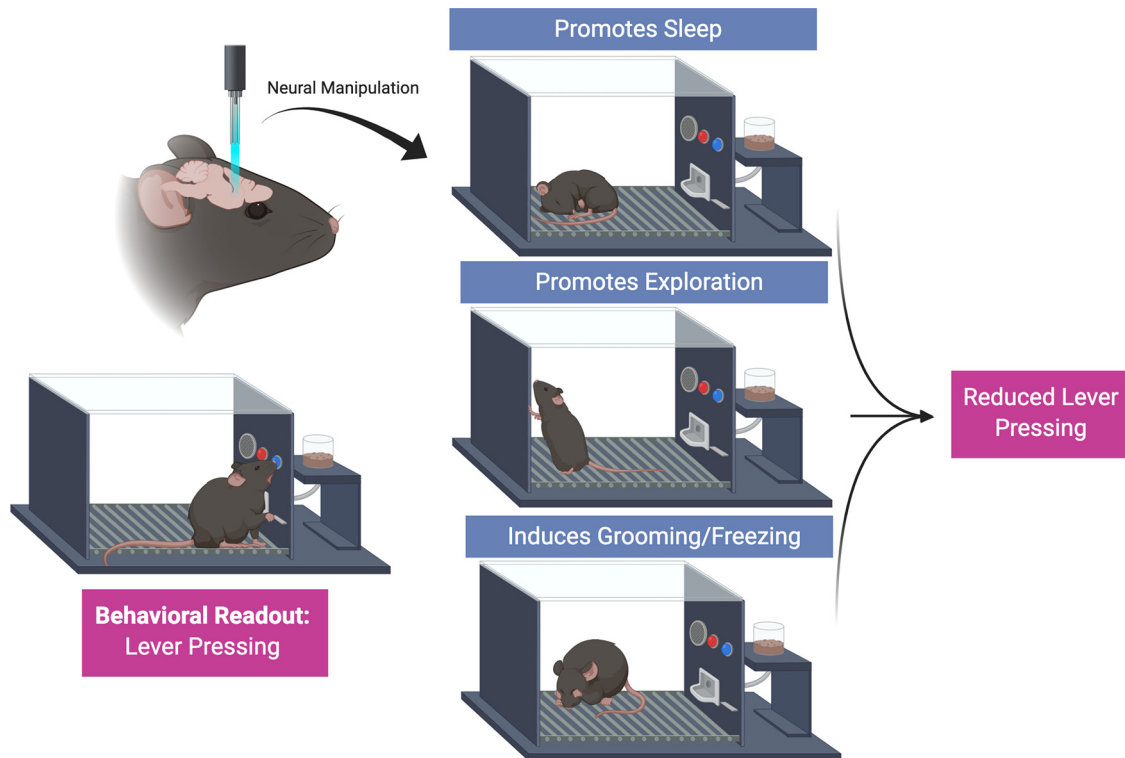


Figure 1. The pitfalls of making conclusions implicating latent variables from individual behavioral measures. Behavior is driven by a range of competing factors that act in unison to drive specific behavioral outputs at specific times. In this example, the dependent measure is lever pressing. In each case, it would be accurate to say that the manipulation of the neural circuit reduced lever pressing. However, this occurs for different reasons in each case. Thus, making the conclusion that the neural circuit encodes appetitive responding or motivation would be inaccurate. For experiments like these, it is important for the field that we have continuity in design and interpretation (i.e., “lever pressing is reduced”) than the semantics of what a circuit encodes. This will allow for accurate data to accumulate across behavioral tasks and conditions to facilitate precise conclusions about how circuit manipulation controls behavior across contexts.

in performance. If one is testing the hypothesis that a circuit encodes the valence of a reward-paired cue and Pavlovian conditioned approach behavior is reduced when the circuit is inhibited, one might conclude that the circuit does encode valence and that reduction in approach reflects decreased attractiveness of the cue. However, considering this effect in isolation, it is equally likely that the circuit encodes salience given that inhibition would also reduce approach behavior, even if valence is unaffected, simply because the animal is less likely to notice the cue presentation.

Many of the behavioral tasks used in circuit manipulation studies were designed to answer questions about pharmacology, translational value, or general behavior, not to parse the underlying co-occurring variables that could contribute to the effects of a circuit manipulation on behavior. It is therefore paramount to consider how to disentangle these many factors to develop durable, reproducible conclusions. Complex tasks have been designed and continue to be developed for this purpose, but accessible dissemination of these approaches to facilitate implementation by researchers with diverse expertise and interests will require sustained effort. Batteries of relatively simple behavioral tasks can also be used in combination to count out common pitfalls. Together, the field must think carefully about how best to incorporate these

considerations into research funding, experimental execution, and publication to move forward.

Why We Need Standardization

Insisting on purely descriptive reporting of behavioral findings, without inference of underlying mechanisms or implications for human behavior, can easily be perceived as pedantic and overly conservative. While descriptive reporting of behavioral results taken to an extreme can limit the utility of using animals as models of human behavior and for studying neurobiology in general, a lack of standardized frameworks for interpreting results from behavioral assays is not without consequence. Take fear conditioning, for example, a commonly used task that has relatively standardized methodology across laboratories. Despite similar methodology for performing the assay, there are widely disparate conclusions made from nearly identical experimental findings across subfields. Many studies have shown that various manipulations of hippocampal activity result in alterations in freezing behavior when animals are presented with a shock conditioned cue; typically, this result is attributed to changes in memory recall. When manipulations are made in the amygdala, the same experimental result of increased or decreased freezing behavior is often attributed to changes in fear

responses. In other regions, the same experimental result has been used to make conclusions regarding circuit control of valence coding or threat responses. It is possible that none of these conclusions are incorrect, it is reasonable to think that changes in memory recall could affect a fear response, or that threat, fear, and valence coding are inextricably intertwined. Nevertheless, the fact that the exact same behavioral readout can be attributed to disparate latent variables depending on the subfield or hypotheses of the experimenter is problematic.

This issue is not specific to the example above, and similar scenarios can be seen throughout neuroscience research including previous publications from the authors. To give a few more examples, reductions in sucrose preference are often attributed to anhedonia in studies focused on depression, while the same effect may be attributed to appetite in the feeding field, or taste in gustatory studies. Along the same lines, conditioned place preference is used to measure drug reward in the addiction field and reconsolidation in the memory field, while marble burying is used to measure anxiety, compulsive behaviors, and autism-like behaviors across studies. Although many studies have run the appropriate controls and no particular conclusion is necessarily at fault, the behavioral neuroscience literature is becoming increasingly difficult to navigate and reconcile.

For Now, Incremental Steps May Be the Most Impactful

The near infinite combination of underlying processes that influence behavior juxtaposed with the relatively few behavioral outputs that are quantified in a typical experiment creates logical snares which are conceptually attractive and difficult to avoid. Indeed, the ratio of latent variables to measured behaviors produces a scenario whereby any conclusion attributing an underlying cause that cannot be directly measured (e.g., the intent to commit aggression) to a circuit based on the outcome of a single experiment is almost certain to be a “fallacy of the converse.” Fallacy of the converse, or affirming the consequent, describes the error of using a valid if-then statement (if this circuit controls aggression → manipulating its activity will alter aggressive behavior) to support its converse (manipulating the activity of this circuit altered aggressive behavior → this circuit controls aggression). The multiplicity of brain-behavior relationships combined with the robustness with which modern neuroscience tools alter behavior make this fallacy all too easy to commit, and the task of interpreting basic experiments quickly becomes daunting when considering the complexity of these relationships.

While grappling with defining ground-truths of cause-and-effect in neuroscience is no doubt a critical endeavor, we propose that for most behavioral neuroscientists, whose interests lie in specialized subfields, it is important to be aware of these issues but that the immediate goal should be practical, easily applicable mitigation strategies. There seems to be a growing awareness of how often our claims of neural circuit function are incorrect or incomplete, even when supported by evidence that would

be considered iron-clad just a few years ago; it is important to acknowledge that it is not practical to wait for paradigm-shifting technical approaches or conceptual frameworks to correct these issues en masse. In this spirit, although none of the authors have expertise in theoretical neuroscience, or claim to have any ground-breaking concepts to present, we wrote this piece aiming to articulate a few common pitfalls that we have learned the hard way as simple guidelines that can easily be understood and applied across subfields. If relatively minor but widely applicable guidelines are continued to be put forward by researchers with diverse expertise in an open forum it could have a major impact on the field as a whole.

What To Do in Practice

While we are far from the first to bring up interpretational pitfalls introduced by the application of powerful new technologies, much of the literature in this area has focused on creating frameworks for fundamental brain functions, how neural activity allows for complex computation, and constructs to define what is and is not causality. Consensus on these issues is critical for moving neuroscience forward, but debate on this level can quickly become abstract and even philosophical in nature. Practical issues of design and interpretation are more often debated in conference poster sessions and in peer-review. This is in part because of the fact that a universally applicable framework for interpretation of experimental results is almost certainly unachievable and therefore difficult to begin to address in published works: each new question and experimental finding may lead to entirely new conceptual areas or follow-up experiments, and exact methodology will always vary across laboratories. However, we posit that the impossibility of universal rules does not preclude the utility of openly discussing general guidelines for standardizing how conclusions are drawn from commonly used techniques and experimental designs.

We aim to facilitate this discussion by briefly proposing a few practical steps that can easily be incorporated in any behavioral neuroscience lab and in dissemination of findings.

Eyes on the Behavior

Quantitative measures are of utmost importance for reporting data, but there is no replacement for the human eye for drawing valid conclusions from behavioral data. Indeed, many of the pitfalls described above can be easily avoided by simply observing the animals' behavior during the experiment. To give an example, one of the authors conducted a conditioning experiment where an auditory cue was associated with the delivery of electrical foot-shock. Instead of learning that the cue predicted an unavoidable aversive stimulus, some subjects learned to cling to the wall of the conditioning chamber to avoid the electrified floor, and instead used the cue to time their jump and return to the floor once the absence of the cue signaled safety. Because animals were immobile while hanging from the wall, an automated analysis would likely lead the experimenter to conclude that the subject was

freezing in anticipation of the shock and had acquired a conditioned fear response as was intended. Observing a neural signal to the cue in this case would lead to potentially spurious conclusions of fear encoding, although it is just as likely that neural activity would be related to escape/avoidance or climbing.

In addition to avoiding the spurious conclusions described here (Fig. 1), observation can also often lead to new discoveries that may not be captured by automated quantification. Importantly, we are not proposing that every experiment requires expensive cameras and time-consuming analytical approaches to quantify continuous behavioral data; rather simple observation can be achieved with inexpensive webcams which can often be interfaced with existing data acquisition setups. In many cases, these data may not even require reporting in manuscripts if no issues are found.

Results of Any Single Behavioral Effect Should Be Reported Descriptively and Separate from Speculation Regarding Brain-Behavior Relationships

Even the most carefully designed and executed experiments can result in incorrect conclusions, and no number of guidelines and standards will avoid incorrect conclusions from making their way into the literature. However, as authors and reviewers, we can take steps to reduce the impact of potentially spurious or overgeneralized conclusions on the direction of the field. We posit that an underlying and easily correctable issue is using single behavioral effects as evidence to draw conclusions about functional properties of circuits.

For example, instead of reporting that “a real-time place preference task demonstrated that the circuit of interest conveys a positive valence signal” it is more appropriate to first report that “animals spent more time in the circuit manipulation paired chamber in a real-time place preference assay.” That is not to say that speculation is not important. Discussing what an experiment may mean in the context of the greater literature is an important aspect of moving science forward. Drawing more overarching conclusions about the meaning of these data certainly has its place, however, we recommend that these statements should be made separately such that lines between data reporting and speculation are not clouded.

Reduce Emphasis on Specificity, and When Claims of Specified Circuit Functions Are Made, They Should Be Supported by Systematic Testing across Diverse Behavioral Procedures

“The data are the data.” Coming to terms with this fact and embracing it is a rite of passage for all scientists. However, the attraction of concluding highly specialized functions in the cellular control of behavior is understandable and impact of this drive can be seen throughout the literature, the authors’ work included. This tendency is reinforced by publishing and funding structures where bold

claims of particular circuits controlling specific aspects of behavior are often considered to be the most impactful findings. The concern with this approach is that while such discoveries could certainly drive brain understanding forward, the emphasis on the necessity of specificity for widely read journal publication may in fact achieve the opposite by luring investigators to turn a blind eye toward plausible yet less specific explanations for a given behavior. Establishing unified and standardized behavioral controls may circumvent this concern, enabling the reader and reviewer to gain a more holistic understanding of how underlying behavioral processes might hierarchically influence other behaviors. To be clear, we are not prescribing that neuroscientists studying behavior “X” must always perform control experiments “Y” and “Z.” There is simply too much heterogeneity across subfields for this to be practical, and such an approach might even be regressive. Rather, we suggest that the conclusions from specific behavioral tasks should be increasingly standardized with inherent acknowledgment that the lack of evidence for a behavioral confound is not evidence for specificity.

Importantly, when making claims that a circuit’s function is specific to a certain behavior, or controls a behavioral category (e.g., the circuit encodes aggression) that is broader than the dependent variables of the study (e.g., activation of the circuit decreased aggressive behavior in the resident-intruder test), the onus should be on the authors to systematically identify and rule out alternative possibilities. First, clear evidence should be presented as to what underlying processes could potentially alter the dependent behavioral measures used (in most cases these factors have been exhaustively described in the animal behavior and psychology literatures). Once a clear framework for the behavioral category has been established, experimental evidence occluding the contribution of the circuit in question to processes which could also alter the primary dependent behavioral variables should be provided.

Conclusions

Neural circuit techniques have vaulted neuroscience forward by expanding our ability to manipulate precise cells and circuits in the brain in awake and behaving animals. However, with every technique comes caveats to consider. Here, we have given specific examples from our own groups that highlight how the complex factors that combine to influence behavior can lead to inaccurate assumptions about what neural circuit manipulations mean for behavioral execution. We have outlined some simple practices that can help make conclusions more reproducible: watching behavioral assays, reporting data in precise terms that are separate from speculation, reducing the emphasis on defining specificity, and manipulating circuits across a wide range of procedures. Together, these approaches will rule out alternative latent variables and facilitate generalizability of conclusions across fields. As we move forward, we need to have these debates formally in the literature to gain consensus across fields and better support these scientific goals as a community.

References

- Armbruster BN, Li X, Pausch MH, Herlitze S, Roth BL (2007) Evolving the lock to fit the key to create a family of G protein-coupled receptors potently activated by an inert ligand. *Proc Natl Acad Sci USA* 104:5163–5168.
- Chawla MK, Guzowski JF, Ramirez-Amaya V, Lipa P, Hoffman KL, Marriott LK, Worley PF, McNaughton BL, Barnes CA (2005) Sparse, environmentally selective expression of Arc RNA in the upper blade of the rodent fascia dentata by brief spatial experience. *Hippocampus* 15:579–586.
- Koolhaas JM, Coppens CM, de Boer SF, Buwalda B, Meerlo P, Timmermans PJ (2013) The resident-intruder paradigm: a standardized test for aggression, violence and social stress. *J Vis Exp*. Advance online publication. Retrieved July 4, 2013. doi: [10.3791/4367](https://doi.org/10.3791/4367).
- Peng Z, Houser CR (2005) Temporal patterns of fos expression in the dentate gyrus after spontaneous seizures in a mouse model of temporal lobe epilepsy. *J Neurosci* 25:7210–7220.
- Rescorla RA, Wagner AR, Black AH, Prokasy WF (1972) A theory of Pavlovian conditioning: variations in the effectiveness of reinforcement and nonreinforcement. In: *Classical conditioning II: current research and theory* (Black AH, Prokasy WF, eds), pp 64–99. New York: Appleton.
- Roth BL (2016) DREADDs for neuroscientists. *Neuron* 89:683–694.
- Sutton R, Barto A (1987) A temporal-difference model of classical conditioning. *Proceedings of the 9th Annual Conference of the Cognitive Science Society*, pp 355–378 July 16–18, Seattle, Washington.