

Sensory and Motor Systems

# Refractoriness Accounts for Variable Spike Burst Responses in Somatosensory Cortex

Bartosz Teleńczuk,<sup>1</sup>  Richard Kempter,<sup>2</sup> Gabriel Curio,<sup>3</sup> and  Alain Destexhe<sup>1</sup>DOI:<http://dx.doi.org/10.1523/ENEURO.0173-17.2017>

<sup>1</sup>Unité de Neurosciences Information et Complexité, Centre National de la Recherche Scientifique, Gif-sur-Yvette 91198, France, <sup>2</sup>Institute für Theoretische Biologie, Humboldt Universität zu Berlin, Berlin 10115, Germany, and <sup>3</sup>Department of Neurology, Universitätsmedizin Charité, Berlin 12203, Germany

## Abstract

Neurons in the primary somatosensory cortex (S1) respond to peripheral stimulation with synchronized bursts of spikes, which lock to the macroscopic 600-Hz EEG waves. The mechanism of burst generation and synchronization in S1 is not yet understood. Using models of single-neuron responses fitted to unit recordings from macaque monkeys, we show that these synchronized bursts are the consequence of correlated synaptic inputs combined with a refractory mechanism. In the presence of noise these models reproduce also the observed trial-to-trial response variability, where individual bursts represent one of many stereotypical temporal spike patterns. When additional slower and global excitability fluctuations are introduced the single-neuron spike patterns are correlated with the population activity, as demonstrated in experimental data. The underlying biophysical mechanism of S1 responses involves thalamic inputs arriving through depressing synapses to cortical neurons in a high-conductance state. Our findings show that a simple feedforward processing of peripheral inputs could give rise to neuronal responses with nontrivial temporal and population statistics. We conclude that neural systems could use refractoriness to encode variable cortical states into stereotypical short-term spike patterns amenable to processing at neuronal time scales (tens of milliseconds).

**Key words:** burst; EEG; modelling; spike patterns

## Significance Statement

Neurons in the hand area of the primary somatosensory cortex respond to repeated presentation of the same stimulus with variable sequences of spikes, which can be grouped into distinct temporal spike patterns. In a simplified model, we show that such spike patterns are product of synaptic inputs and intrinsic neural properties. This model can reproduce both single-neuron and population responses only when a private variability in each neuron is combined with a multiplicative gain shared over whole population, which fluctuates over trials and might represent the dynamical state of the early stages of sensory processing. This phenomenon exemplifies a general mechanism of transforming the ensemble cortical states into precise temporal spike patterns at the level of single neurons.

## Introduction

Neurons usually generate highly variable responses to repeated presentations of the same stimulus. This vari-

ability might originate from thermal noise in ion channels (Chow and White, 1996; Schneidman et al., 1998), recurrent activity in the network (van Vreeswijk and Sompolin-

Received May 17, 2017; accepted June 28, 2017; First published August 14, 2017.

The authors declare no competing financial interests.

Author contributions: B.T., R.K., G.C., and A.D. designed research; B.T., R.K., G.C., and A.D. performed research; B.T. analyzed data. B.T., R.K., G.C., and A.D. wrote the paper.

This work was partially funded by the Centre de la Recherche Scientifique (CNRS, France), European Community Future and Emerging Technologies program (Human Brain Project FP7-604102, H2020-720270), and Bundesministerium für Bildung und Forschung (Grants BCCN-B1, 01GQ1001A, and 01GQ0972).

Acknowledgements: We thank Jan Antolik and Andreas Herz for critical

sky, 1996; Destexhe et al., 2003) or modulation of neuronal excitability (Destexhe et al., 2001; Faisal et al., 2008; Fontanini and Katz, 2008). Over recent years, many results have shown that a significant fraction of this variability is shared across large populations of neurons. These shared fluctuations were attributed to the variations of incoming stimuli and modulation of excitability (Shadlen and Newsome, 1998; Brody, 1999; Ecker et al., 2014; Goris et al., 2014). However, most of these studies focused on spike-rate variations over long time scales, neglecting millisecond-range spike timing differences. Such short time scales might be especially important for neurons that fire brief bursts of spikes at a frequency reaching several hundred spikes per second separated by much longer intervals of silences (Evarts, 1964; Llinás and Jahnsen, 1982; Krahe and Gabbiani, 2004). Since the transitions between bursting and tonic firing characterized by longer interspike intervals are dynamically controlled (Swadlow and Gusev, 2001) both time scales might be relevant for neuronal processing.

Neurons in somatosensory cortices can encode their sensory inputs in the precise lengths (<10 ms) of interspike intervals (Panzeri et al., 2001; Estebanez et al., 2012; Witham and Baker, 2015), which suggests that high firing precision is important for the reliability of stimulus encoding. In the primary somatosensory cortex (S1) of macaque, single neurons respond to peripheral stimulation with barrages of spikes elicited at sub-millisecond precision (Baker et al., 2003; Fig. 2). However, when presented repetitively, the same stimulus produces variable responses in terms of the number of elicited spikes and the lengths of interspike intervals, which might limit the amount of information they can carry. It is, however, possible that such trial-to-trial variability represents an alternation between several classes of reliable responses, called spike patterns (Toups et al., 2012). Such spike patterns have been indeed observed in S1 (Telenczuk et al., 2011), but neither the mechanism of their generation nor their functional significance has been identified.

Here, we propose a mechanism that explains the precise patterns of single-neuron responses as an interplay between synaptic inputs and intrinsic refractory properties of the neuron (Berry and Meister, 1998; Czanner et al., 2015). To test this hypothesis, we develop simple models capturing the two processes, and we are able to fit the parameters of the models to extracellular recordings of single-unit activity in the somatosensory cortex.

## Methods

### Experimental methods

Neuronal responses were evoked in the hand representation of the S1 of two awake *Maccaca mulatta* female monkeys by electrical median nerve stimulation at the wrist (pulse width: 0.2 ms; repetition rate: 3 Hz; intensity:

150% motor threshold; see also Fig. 1A). Single-unit activity was recorded extracellularly using a 16-channel Eckhorn drive (Thomas Recording GmbH; Eckhorn and Thomas, 1993). Each of the platinum/glass electrodes (electrode impedance: 1 M $\Omega$ ) was advanced into cortex (area 3b) until well-isolated neurons were found with one of the electrodes. The receptive fields of the neurons were tested by means of manual tapping using a stylus.

In addition, we recorded EEG signals from the surface of the dura (epidural EEG) with two electrodes placed in the vicinity of the micro-electrode array. The signals were then high-pass filtered (>400 Hz) to obtain the high-frequency EEG (hf-EEG).

All experimental procedures were performed according to Home Office UK (Scientific Procedures) Act 1986 regulations and institutional ethical guidelines.

### Spike sorting

From the extracellular recording we obtained spike waveforms that were first bandpass filtered (1–10 kHz) and then sampled with a frequency of 20 kHz. Action potentials of neurons surrounding the microelectrode were detected in the extracellular recordings by means of amplitude thresholding; the threshold was chosen manually to detect spikes whose amplitude was significantly above noise level. The wave shapes of the detected action potentials were parameterized by their amplitude, width and projection coefficients on two main principal components. The spike timings of single units were determined based on these shape features using a manual cluster cutting method that allowed for identification of clusters of arbitrary shapes (Lewicki, 1998; Hazan et al., 2006). To ensure correct clustering the procedure was performed by two operators and then checked for consistency.

To validate the spike discrimination, we checked the extracellular action potentials generated by a putative single neuron for the consistency of the wave shape and amplitude. Additionally, we searched for interspike intervals (ISIs) shorter than 1 ms; if such short intervals were found the clustering procedure was repeated. Spike trains with evidence of poor spike sorting (inconsistent wave shapes or ISIs < 1 ms) were excluded from subsequent analyses.

### Spike pattern classification

From 46 neurons identified in the two monkeys, we selected 17 neurons that responded with bursts of spikes. Bursting neurons were defined by responses with more than one spike for at least 4% of stimuli and a mode of the ISI histogram shorter than 1.8 ms (Baker et al., 2003).

Among these 17 neurons we identified neurons that also fired spontaneous bursts by counting the number of ISIs in the poststimulus period (>30 ms after the stimulus) that were shorter than 1.8 ms. In this time window, the initial response dies out and baseline firing rate is re-established. Neurons that fired at least 10% of bursts in this window were labeled as spontaneous bursters.

In each neuron we summed spikes over all trials, and we identified prominent peaks in the obtained poststimulus time histograms (PSTH; bin width 0.2 ms; Fig. 3A). As the within-burst spike composition varied from trial to trial, each trial was described with a binary string whose entries

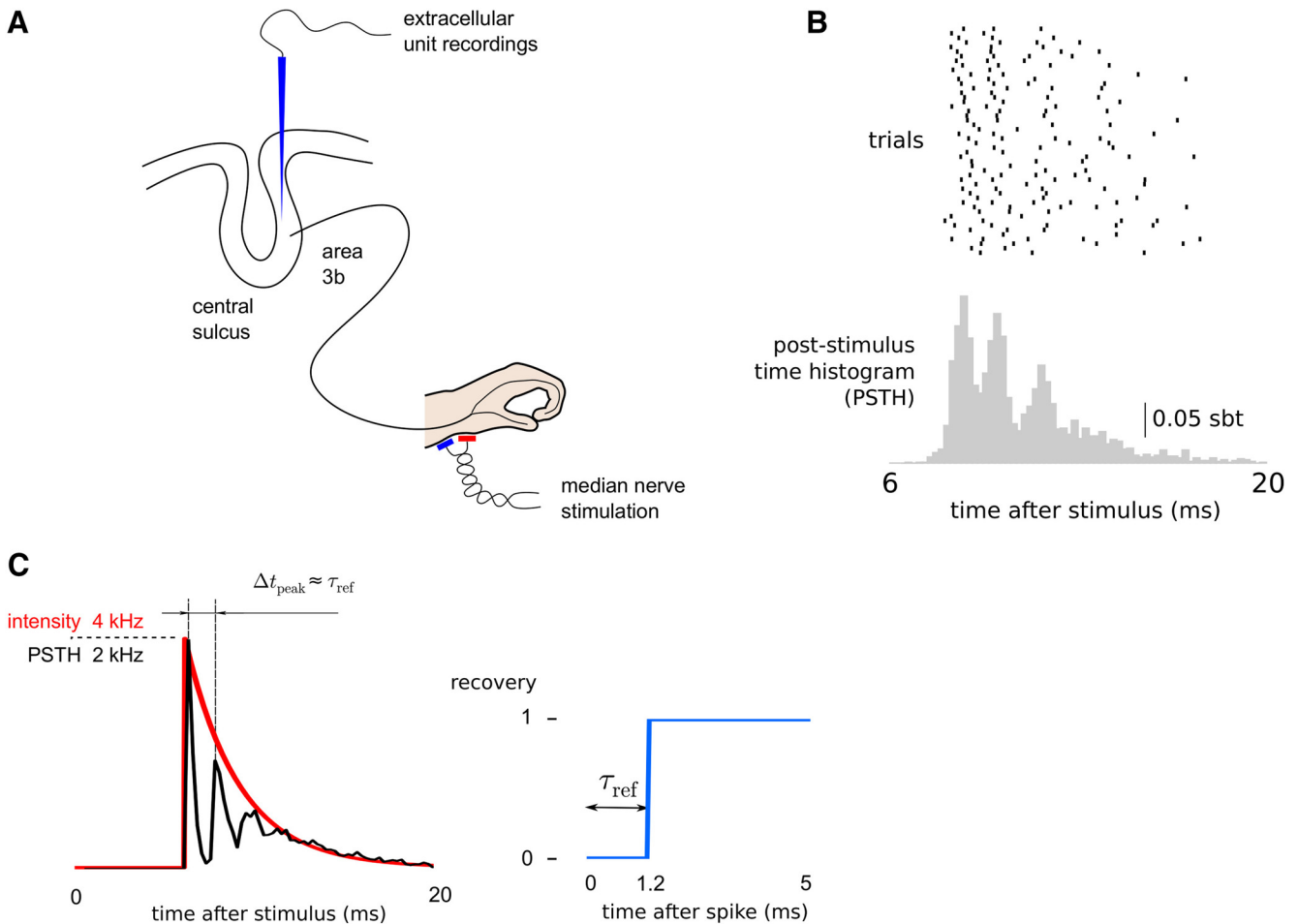
remarks on earlier version of this paper.

Correspondence should be addressed to Bartosz Teleńczuk at the above address, E-mail: telenczuk@unic.cnrs-gif.fr.

DOI:<http://dx.doi.org/10.1523/ENEURO.0173-17.2017>

Copyright © 2017 Teleńczuk et al.

This is an open-access article distributed under the terms of the Creative Commons Attribution 4.0 International license, which permits unrestricted use, distribution and reproduction in any medium provided that the original work is properly attributed.



**Figure 1.** Modeling responses to median nerves stimulation of neurons recorded in S1 of macaque monkeys. **A**, Sketch of the experimental paradigm. **B**, Raster plot of 60-sample responses of a single neuron (top) and the PSTH calculated from all 956 trials (bottom; s/bt, spikes per bin per trial, bin size 0.2 ms). **C**, Simulation of the STPM with sample parameters: exponentially decaying intensity function (left, red line) and recovery function implementing an absolute refractory period of  $\tau_{ref} = 1.2$  ms (right). The simulated PSTH (left, black line) contains characteristic peaks separated by intervals  $\Delta t_{peak}$  approximately equal to  $\tau_{ref}$  (left, thin vertical black lines). Note the similarity to the PSTH calculated from spikes of cortical neurons triggered by the median nerve stimulation (compare with **B**, bottom panel).

(one or zero) represented the occurrence or nonoccurrence of a spike in a sequence of bins bracketing the major peaks of the overall PSTH: the borders between the bins were placed manually in the troughs of the PSTH (Fig. 3A,B, vertical lines). Each binary string corresponded to one spike pattern; the length of the string equalled the total number of peaks in the PSTH.

In addition, we averaged the concomitant hf-EEG responses over trials concurring to each of the identified spike patterns of a single neuron.

**Spike-train probability model (STPM)**

To reproduce the distribution of emitted spikes in a single neuron, we chose a minimal model (STPM) that could replicate the observed high variability in the cortical responses (Softky and Koch, 1993; Destexhe et al., 2001) and manifest refractoriness (decreased probability of spiking for some time after producing a spike).

We assumed that a spike emission is a random point process with the probability

$$p(\text{spike in interval } [t, t + dt] | \{t_j\}) = \lambda(t | \{t_j\})dt, \quad (1)$$

where  $\{t_j\}$  denotes the spiking history earlier than time  $t$ , and  $\lambda(t | \{t_j\})$  is the conditional intensity.

The conditional intensity  $\lambda(t | \{t_j\})$  is assumed to have a Markov property, i.e., it is conditioned only on the time  $t_{last}$  of occurrence of the last spike at time:  $\lambda(t | \{t_j\}) = \lambda(t, t_{last})$ . A further assumption is that the firing-rate modulation and refractory effects are multiplicative, thus reflecting the reduction of spike probability due to, for example, inactivation of sodium channels or hyperpolarization caused by opening of potassium channels (Berry and Meister, 1998):

$$\lambda(t | t_{last}) = q(t)w(\Delta t), \quad (2)$$

where  $q(t)$  is the intensity function,  $w(\Delta t)$  is the recovery function, and  $\Delta t = t - t_{last}$  is the time interval since the last spike.

The parameters of the model, the intensity function  $q(t)$  and the recovery function  $w(\Delta t)$ , are defined on a per-bin basis, and they are fitted to experimental data by means of a maximum likelihood approach. To capture fine temporal details of the neuronal responses (for example, response onset and ISIs) the intensity and recovery functions were defined with a short sampling interval (0.05 ms). The log-likelihood function  $L(q; w | \{t_i\})$  is obtained by log-transforming the probability function of an inhomogeneous Poisson process with the above conditional intensity (2; Johnson and Swami, 1983; Dayan and Abbott, 2001):

$$L(q; w | \{t_i\}) = - \int_0^T q(t)w(t - t_{last})dt + \sum_i \ln [q(t_i)w(t_i - t_{last})]. \tag{3}$$

where  $T$  is the duration of response ( $T = 30$  ms),  $i$  is the spike index, and  $t_i$  denotes the times of occurrence of recorded spikes. The likelihood  $L$  of obtaining the experimental spike train  $t_i$  is maximized with respect to the parameters  $q(t)$  and  $w(\Delta t)$  by means of an iterative expectation-maximization (EM) algorithm, which guarantees that the global maximum is reached (Miller, 1985). In addition, we ensure that after 5 ms the model neuron recovers from refractoriness by setting the recovery function to unity for long intervals, i.e., we require  $w(\Delta t > 5 \text{ ms}) = 1$  (Fig. 2A).

To study the effects of refractoriness on the modeled responses, we compared the results to the STPM without refractory period (nonrefractory STPM,  $w(\Delta t) = 1$  for all  $\Delta t > 0$ ). The model is fully characterized by its intensity function  $q(t)$ , which can be estimated directly from the experimental PSTH (bin width set to 0.05 ms to allow for sufficient temporal precision).

### Generalized linear model (GLM)

One limitation of the STPM is that the history effects are restricted to the last spike only. To evaluate effects evoked beyond the last spike, we considered the GLM (Truccolo et al., 2005; Czanner et al., 2015) with conditional intensity  $\lambda_{GLM}(t | \{t_i\})$  of the form

$$\lambda_{GLM}(t | \{t_i\}) = \exp\left(s(t) + \sum_i h(t - t_i)\right) \tag{4}$$

where  $s(t)$  is the driving force and  $h(\tau)$  is the spike history kernel.

Note that the intensity function  $q(t)$  of the STPM can be identified with  $\exp(s(t))$ , and the recovery function  $w(\Delta t)$  corresponds to  $\exp(\sum_i h(t - t_i))$ . In contrast to the STPM, in the GLM the effects of the previous spikes can extend infinitely back in time. In practice, we reduce the number of free parameters of the GLM by restricting the history horizon above which the spikes cannot contribute to the responses anymore; we thus set  $h(t > t_{max}) = 1$ . The horizon  $t_{max} = 8$  ms was selected to maximize the Akaike Information Criterion (AIC), which balances the goodness

of fit with the number of free parameters of the model (Fig. 2C).

The likelihood of the GLM is defined analogously to the STPM:

$$L(s; h | \{t_i\}) = - \int_0^T \lambda_{GLM}(t | \{t_i < t\})dt + \sum_i \ln \lambda_{GLM}(t_i | \{t_i < t_i\}) \tag{5}$$

$$= - \int_0^T \exp\left(s(t) + \sum_i h(t - t_i)\right)dt + \sum_j \left(s(t_j) + \sum_i h(t_j - t_i)\right) \tag{6}$$

where the sums go over all spikes.

Since the log-likelihood function is a convex function of the parameters, they can be found using standard optimization techniques. In the results presented here we used the conjugate gradient optimization.

We compared the goodness-of-fit of the STPM and the GLM using the time-wrapping method (Brown et al., 2002): The ISIs in the experimental data were rescaled to account for temporal variations in firing probability. If the model perfectly reproduced the data the distribution of the rescaled ISIs would be uniform (Fig. 2E, diagonal).

### Model validation

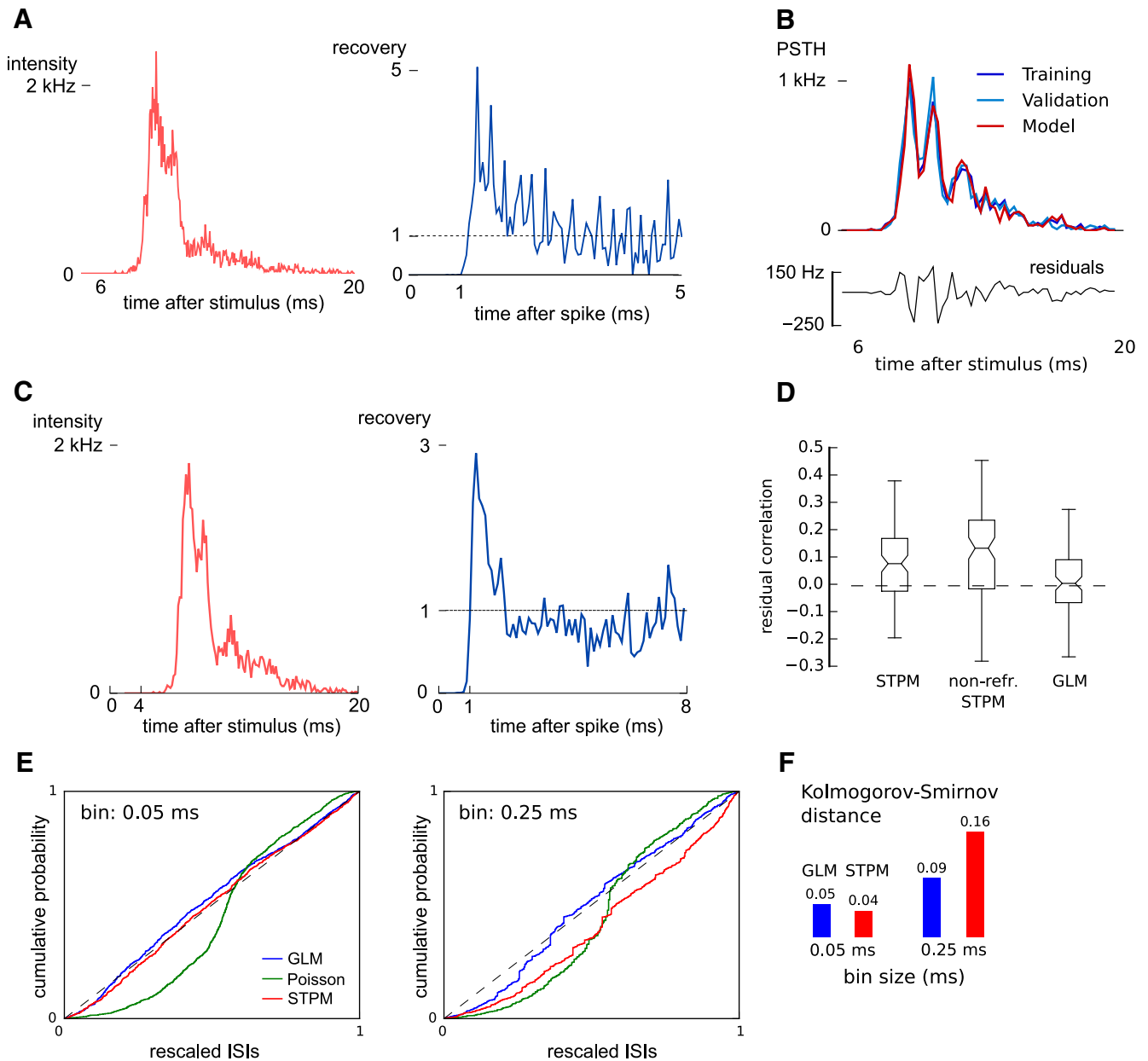
To validate the model, the dataset was divided into two nonoverlapping subsets of equal size: a training and a validation set. The trials for each set were selected randomly from all stimulation repetitions. The parameters of the model were fitted to the training set. Based on these parameters 1000 spike trains were simulated. The goodness-of-fit was evaluated separately for two statistics  $X$ , that is, the PSTH (with bin size 0.2 ms) and the spike pattern distribution. For each of the two statistics, the model error was evaluated as the normalised differences between the simulated  $\mathbf{X}^{\text{model}}$  and validation spike trains  $\mathbf{X}^{\text{validate}}$  (cf. Rauch et al., 2003):

$$Err(\mathbf{X}^{\text{model}}, \mathbf{X}^{\text{validate}}) = \sum_{i=1}^N \frac{(X_i^{\text{model}} - X_i^{\text{validate}})^2}{X_i^{\text{validate}}}, \tag{7}$$

where  $\mathbf{X} = X_{i=1}^N$  is either the PSTH or the spike pattern distribution of model ( $\mathbf{X}^{\text{model}}$ ) or validation ( $\mathbf{X}^{\text{validate}}$ ) set;  $N$  is the size of the vector and equals the number of bins ( $N = 70$  for  $T = 14$  ms and 0.2-ms bins) or the number of identified spike patterns ( $N \leq 16$  for binary words of length less or equal to 4).

The model error  $Err(\mathbf{X}^{\text{model}}, \mathbf{X}^{\text{validate}})$  was compared against the error between the training and validation sets  $Err(\mathbf{X}^{\text{train}}, \mathbf{X}^{\text{validate}})$  (reference error). The significance of the difference between the model and reference errors was quantified by means of the  $F$  test with  $(N-1, N-1)$  degrees of freedom (Barlow, 1989) where

$$F = Err(\mathbf{X}^{\text{model}}, \mathbf{X}^{\text{validate}}) / Err(\mathbf{X}^{\text{train}}, \mathbf{X}^{\text{validate}}). \tag{8}$$



**Figure 2.** Models with refractoriness can reproduce the experimental spike trains. **A**, Intensity function (left) and recovery (right) functions of the STPM fitted to experimental data (an example for a single neuron). **B**, Comparison of PSTHs of the training data (top, dark blue line), validation data (light blue line), and model data (red line). Note the overlap between the lines, which is a sign of the match between the model and both the training and validation sets. The difference between the model PSTH from the validation PSTH (model residuals, bottom) is equivalent to the intrinsic variation between the training and validation set ( $F = 1.02$ ,  $p > 0.01$ , see Methods for definition). **C**, Fitted intensity (left) and recovery functions (right) of the GLM (bin size, 0.25 ms). **D**, Correlation coefficients between the residuals (for the STPM shown in **B**, bottom panel) and the validation PSTH (for the STPM shown light blue in **B**) calculated for three different models: the STPM, the STPM without refractoriness (non-refr. STPM), and the GLM. Box plots represent the distribution of bootstrapped correlation coefficients: boxes - quartiles, notch - median with confidence intervals, whiskers - range. The horizontal dashed line denotes the correlation coefficient between the difference of PSTH of validation and training dataset with the training dataset PSTH. **E**, The empirical cumulative distribution of the ISIs of the experimental spike trains rescaled according to the conditional intensity function of all three fitted models (time-wrapping test). If the model perfectly reproduced the experimental ISIs the cumulative distribution should line up with the diagonal. This procedure was repeated for two different bin sizes (0.05 ms, left; and 0.25 ms, right). **F**, The Kolmogorov-Smirnov (K-S) distance of the model (maximum divergence of the model's cumulative distribution from diagonal in **E**) decreased with an increasing bin size in both STPM and GLM. This dependence on bin size was less pronounced for the GLM.

**Serial correlations**

From the responses of single neurons we identified spike triplets defined as three consecutive spikes sepa-

rated by intervals shorter than 4 ms. In this analysis, to increase the number of intervals, we broadened the analysis window to 50 ms after the stimulus. Next, we calcu-



lated Pearson’s correlation between the ISIs of the first and the second spike and the second and the third spike in the triplet ( $r_{data}$ ). We compared the estimated  $r_{data}$  to the correlation coefficient calculated from surrogate data ( $r_{model}$ ) for the same number of trials, which were generated by the STPM model with parameters fitted to the experimental spike trains. The significance of the differences between correlation coefficients found in simulated and experimental ISIs was evaluated by means of a bootstrap test. To this end, 1000 estimates of  $r_{model}$  were obtained from independently simulated datasets, and the resulting coefficients were compared to  $r_{data}$ . The  $p$  value was taken as the smaller of two values multiplied by 2: (1) the fraction of bootstrap trials for which  $r_{model}$  was greater than  $r_{data}$ ; or (2) the fraction of bootstrap trails for which  $r_{model}$  was smaller than  $r_{data}$  (two-sided bootstrap test).

**Population model**

To model the relation between spike patterns of a single neuron and the response of the population, we extended the STPM to a population of uncoupled neurons receiving common inputs.

The population response was calculated from a simulated ensemble of 5000 identical neurons. The parameters of the STPM were fitted to the responses of the analyzed neuron, and these parameters were shared by all 5000 model neurons. In each trial  $j$  the intensity function of all neurons was modulated by a multiplicative gain factor  $G_j$  that was drawn from a uniform distribution on the interval  $[1 - \gamma, 1 + \gamma]$ , where  $0 \leq \gamma \leq 1$  is the strength of modulation. The intensity function in trial  $j$  was then  $q_j(t) = G_j q(t)$ . From the obtained single-trial single-neuron responses the total population response was calculated by summing the binned spike responses of all neurons (bin size 0.2 ms) and subsequent bandpass filtering (400-1200 Hz) corresponding to the analysis of EEG data.

Next, we randomly selected a single neuron from the population and used its spikes for further analysis. We classified the spike patterns of this neuron in single trials based on the occurrence/omission of spikes in a discrete sequence of spiking “windows”. The bandpass filtered population response was then averaged over trials with respect to the type of concomitant spike pattern. This procedure, when applied to the model, reproduced the analysis that was applied to the experimental data and described above (see below, Spike pattern classification). The root mean square (RMS) amplitude of the pattern-specific average was compared with the experimentally-obtained hf-EEG related to the same spike pattern (Telenczuk et al., 2011). The similarity of the values across different spike patterns was quantified by means of Pearson’s correlation coefficient.

**Biophysical model**

To understand the mechanisms of burst generation, we developed a simplified single-neuron model. The model consists of a linear neuron with a spiking threshold (leaky integrate-and-fire, LIF), which receives conductance-based inputs through depressing synapses (short-term synaptic depression). The membrane potential in the model follows the standard membrane equation:

$$C_m \frac{dV}{dt} = -g_L(V - V_{rest}) - I_{syn} \tag{9}$$

where  $C_m$  is the membrane capacitance,  $g_L$  is the leak conductance,  $V_{rest}$  is the resting potential, and  $I_{syn}$  are the synaptic currents. When the membrane potential reaches the threshold  $V_{thr}$  a spike is generated and the potential is reset to  $V_{reset}$  putting the cell into a hyperpolarized state. The total synaptic current in the leaky integrate-and-fire (LIF) neuron is a sum of intracortical and thalamocortical currents:  $I_{syn}(t) = I_{Cortex}(t) + I_{Th}(t)$ .

The cortical synaptic currents are conductance-based inputs from  $n_{inh}$  inhibitory and  $n_{exc}$  excitatory neurons. The excitatory  $g_{exc}$  and inhibitory  $g_{inh}$  synaptic conductance are a sum of contributions mediated by each spike, such that  $g_{exc/inh}(t) = \sum g(t - t_{exc/inh})$ . The times of the excitatory  $t_{exc}$  and inhibitory  $t_{inh}$  synaptic inputs are drawn from a homogeneous Poisson process with equal rates for excitatory and inhibitory inputs  $f_{exc} = f_{inh}$ . Each spike results in a transient increase of the synaptic conductance with an exponential time course:

$$g(t - t_{sp}) = w \exp\left(\frac{t - t_{sp}}{\tau}\right) \tag{10}$$

for  $t \geq t_{sp}$  and 0 otherwise. Here  $t_{sp}$  is the time of the spike,  $w$  is the synaptic weight and  $\tau$  is the synaptic time constant. The reversal potentials for excitation and inhibition are  $E_{exc}$  and  $E_{inh}$ , respectively. With these definitions the total current of cortical synapses is:

$$I_{Cortex} = g_{exc}(t)(V - E_{exc}) + g_{inh}(t)(V - E_{inh}) \tag{11}$$

In addition to the intracortical inputs, the neuron receives excitation from  $n_{Th}$  thalamocortical excitatory neurons. The thalamocortical neurons are silent in absence of peripheral stimulation and generate Poisson-distributed spikes 7.68 ms after the onset of the median nerve stimulus (the delay takes account of the propagation delays from periphery to the cortex). The strength of thalamocortical excitatory synapses providing the feedforward inputs to the model decays with the presynaptic activity following the short-term synaptic depression mechanism (Tsoodyks and Markram, 1997):

$$I_{Cortex} = g_{exc}(t)(V - E_{exc}) + g_{inh}(t)(V - E_{inh}) \tag{12}$$

$$\frac{dy_i}{dt} = -\frac{y_i}{\tau_1} + U(1 - y_i - z_i)\delta(t - t_{sp}) \tag{13}$$

$$\frac{dz_i}{dt} = \frac{y_i}{\tau_1} - \frac{z_i}{\tau_{rec}} \tag{14}$$

where  $y_i$  and  $z_i$  are fractions of synaptic resources in active and inactive states,  $\tau_1$  is the decay constant of synaptic conductance,  $\tau_{rec}$  is the recovery time from synaptic depression and  $U$  describes the fraction of available resources used by each presynaptic spike.

The postsynaptic current due to the thalamocortical inputs is then:

**Table 1 List of parameters used in the LIF model**

Parameter	Symbol	Units	Value	References
<b>LIF neuron</b>				
Membrane capacitance	$C_m$	nF	0.5	Johnston and Wu (1995)
Leak conductance	$g_L$	$\mu S$	0.025	Johnston and Wu (1995)
Rest potential	$V_{rest}$	mV	-70	Johnston and Wu (1995)
Spike threshold	$V_{thr}$	mV	-40	Johnston and Wu (1995)
Reset potential	$V_{reset}$	mV	-70	Johnston and Wu (1995)
<b>Cortical excitatory inputs</b>				
Synaptic weight	$w_{exc}$	$\mu S$	0.0072 (*)	
Synaptic time constant	$\tau_{exc}$	ms	0.9 (*)	Stern et al. (1992)
Synaptic reversal potential	$E_{exc}$	mV	0	Johnston and Wu (1995)
Number of connections	$n_{exc}$	-	200	Douglas and Martin (2007)
Firing rate	$f_{exc}$	Hz	10 (*)	
<b>Cortical inhibitory inputs</b>				
Synaptic weight	$w_{inh}$	$\mu S$	0.022 (*)	
Synaptic time constant	$\tau_{inh}$	ms	4	Johnston and Wu (1995)
Synaptic reversal potential	$E_{inh}$	mV	-70	Johnston and Wu (1995)
Number of connections	$n_{inh}$	-	$n_{exc}$	Douglas and Martin (2007)
Firing rate	$f_{inh}$	Hz	$f_{exc}$	
<b>Thalamocortical inputs</b>				
Synaptic weight	$w_{Th}$	$\mu S$	0.035 (*)	
Time constant	$\tau_{Th}$	ms	$\tau_{exc}$	
Reversal potential	$E_{Th}$	mV	$E_{exc}$	
Number of connections	$n_{Th}$	-	28 (*)	Douglas and Martin (2007)
Firing rate	$f_{Th}$	Hz	700 (*)	Hanajima et al. (2004)
Use of synaptic resources	$U$	-	0.6-0.9 (*)	Gil et al. (1997, 1999)
Decay of synaptic conductance	$\tau_1$	ms	$\tau_{exc}$	
Recovery time	$\tau_{rec}$	ms	700	Gil et al. (1997)

Value column indicates typical parameter values or ranges found in the literature (where available); \* denotes the parameters which were adjusted to fit the experimental data.

$$I_{Th} = G_{Th}(t)(V - E_{exc}), \tag{15}$$

where the total conductance due to thalamic inputs is given by:

$$G_{Th}(t) = \sum_{i=1}^{n_{Th}} y_i(t)g_{Th,i} \tag{16}$$

$g_{Th,i}$  stands for conductance of a single synapse and  $y_i$  its efficiency.

Eight parameters of the model were adjusted to reproduce the experimental PSTH: weights of excitatory ( $w_{exc}$ ), inhibitory ( $w_{inh}$ ) and thalamocortical ( $w_{Th}$ ) synaptic inputs, excitatory synaptic time constant ( $\tau_{exc}$ ), firing rates of cortical ( $f_{exc}$ ) and thalamocortical ( $f_{Th}$ ) presynaptic neurons, number of thalamocortical synapses ( $n_{Th}$ ), and use of synaptic resources by thalamocortical synapse release ( $U$ ). Other parameters were fixed to values found in the literature. The values of other parameters are given in Table 1.

## Results

Neurons in area 3b of macaque monkeys (S1) show brief (<10 ms) bursts of activity in response to stereotypical electrical stimulation of the median nerve (0.2-ms pulse, 1.5 time motor threshold applied transcutaneously to the median nerve; see also Fig. 1A). In a dataset of 46 neurons recorded extracellularly using movable platinum-glass electrodes (Eckhorn drive, Thomas Recordings) we

found 17 neurons that responded with burst of spikes (defined as trains of two or more spikes with ISIs shorter than 1.8 ms). When averaged over several repetitions of the stimulation the responses gave rise to a poststimulus time histogram (PSTH) with prominent peaks coincident with the within-burst spikes (Fig. 1B). The appearance of such PSTH peaks points to the precision of the burst timing with respect to the onset of the stimulus.

Some of these bursting neurons also elicited spikes in absence of median nerve stimulations (five neurons fired at least 10% of bursts in the window [30, 300] ms after the stimulus). The evoked and spontaneous bursts differed slightly with respect to mode of the within-burst interval distribution [evoked: 1.82 (1.71) ms; spontaneous: 1.32 (0.41) ms, mean (SD) across neurons] and burst length [evoked: 2.76 (1.26) spikes per burst; spontaneous: 2.18 (0.39) spikes per burst], but these differences were not statistically significant ( $t$  test,  $p > 0.01$ ).

To understand the mechanisms underlying bursting of neurons in the S1, we propose a phenomenological model of the single-neuron response to the median nerve stimulation. The model is based on two experimental observations. (1) On presentation of strong sensory stimuli, layer IV cortical neurons are bombarded with intense and coincident synaptic inputs from thalamocortical neurons (Gil et al., 1999; Swadlow and Gusev, 2001; Hanajima et al., 2004; Bruno and Sakmann, 2006; Cruikshank et al., 2007). (2) After emitting a spike, neurons are refractory, which limits their maximum firing rate (Gray, 1967; Berry

and Meister, 1998; Kara et al., 2000). To illustrate the effects of these two phenomena on neuronal responses, we simulated a probabilistic model (the STPM; see Methods) with an exponentially decaying intensity function and an absolute refractory period  $\tau_{\text{ref}} = 1.2$  ms (Fig. 1C). The PSTH of the simulated spike responses qualitatively reproduces main features of the PSTH obtained from experimental data. Specifically, the absolute refractory period leads to an appearance of multiple peaks in the PSTH (three peaks visible in Figure 1C: at 6, 7.8, and 9.5 ms after the stimulus) separated by deep troughs corresponding to periods of quiescence during which the neuron is refractory. The presence of such peaks and troughs in the trial-averaged PSTH is possible because the responses of the neuron are reliable across trials. The first peak of the PSTH reflects the initial spike triggered by the sharp transient of the intensity function (Fig. 1C, red line). This initial response is highly reliable, giving rise to the narrowest and tallest PSTH peak (half-amplitude width: 0.75 ms; peak-to-trough amplitude: 1773 spikes/s in Fig. 1C, black line). The refractory state following the first spike leads to a pronounced decrease of firing probability and gives rise to the deep PSTH trough following the initial PSTH peak. The subsequent PSTH peaks become wider and are of smaller amplitude due to the gradual decay of the intensity function (second peak: 1.25 ms, 1002 spikes/s; third peak: 1.25 ms, 290 spikes/s). The PSTH obtained from this simulation is qualitatively similar to cortical burst responses triggered by peripheral nerve stimulation (compare Figure 1C, left, with B, bottom).

### Refractoriness explains the intraburst intervals

We demonstrated that the STPM with a decaying intensity function and an absolute refractory period can produce a PSTH that agrees qualitatively with the responses of neurons in S1 of macaques. To test whether the STPM can also quantitatively reproduce the fine details of neuronal responses recorded *in vivo*, we inferred the intensity and recovery functions directly from the data. The two functions were defined on per-bin basis and were treated as the free parameters of the model. These parameters were then fitted to the experimental spike trains using a convex optimisation technique guaranteeing the identification of the most optimal model (see Methods; Fig. 2A).

The fitted intensity function peaks shortly after the stimulus onset (<10 ms) and decays back to baseline when the burst is terminated (Fig. 2A, left). The intensity function still contains three distinct peaks, but they are less prominent compared to the peaks in the PSTH (Fig. 1B). This smoothing can be attributed to the decoupling of synaptic inputs, which are represented by the intensity function, from the refractoriness, which is represented by the recovery function (Fig. 2A, right). Although the maximum of the intensity function is much above the rate at which individual neurons can fire spikes, the refractoriness limits the firing rate of the model neuron. In agreement with the properties of biological neurons, the fitted recovery function is equal to 0 for the first 1 ms after emitting a spike (absolute refractory period), but after a few milliseconds fully recovers from the refractoriness returning to the rest

state ( $w(t) \approx 1$ ). Interestingly, immediately after the absolute refractory period the recovery function over-shoots for  $\sim 1$  ms, largely exceeding the rest value. The fast ( $\ll 1$  ms) fluctuations following this over-shoot represent statistical noise due to the finite size of the data set. Altogether, the parameters of the STPM disentangle the synaptic inputs from the refractory effects.

### The STPM provides a parsimonious description of bursting in S1 cortex

The simulated peristimulus time histogram (Fig. 2B, red line) matches closely the one obtained from the experimental data (Fig. 2B, dark blue line). To demonstrate that this good match is not a result of an over-fitting, we performed cross-validation. First, the data set was divided randomly into two subsets: training data and validation data. The model was fitted only to the first subset, and then the results of the simulation were validated on the second (Fig. 2B, light blue line). We found that the difference of the fitted PSTH from the validation set was of the same magnitude as the variation within the dataset (see Methods;  $F$  test,  $p > 0.01$ ). This test indicated that the model optimally captured the features of both training and validation set without considerable over-fitting.

The parameters of the model were fitted to each of the 17 neurons yielding similar results. Importantly, an application of the cross-validation procedure revealed that in 12 out of the 17 neurons the PSTH simulated with the model was not significantly different from the PSTH calculated from the recorded spike trains ( $F = 0.65\text{--}1.59$ ,  $p > 0.01$ ). In the remaining five neurons the modeled PSTH deviated significantly from the validation PSTH ( $F = 2.33\text{--}4.88$ ,  $p < 0.01$ ,  $F$  test). This sub-population of neurons may have differing firing properties that would need more sophisticated models (implementing, for example, bursting mechanisms; see Discussion).

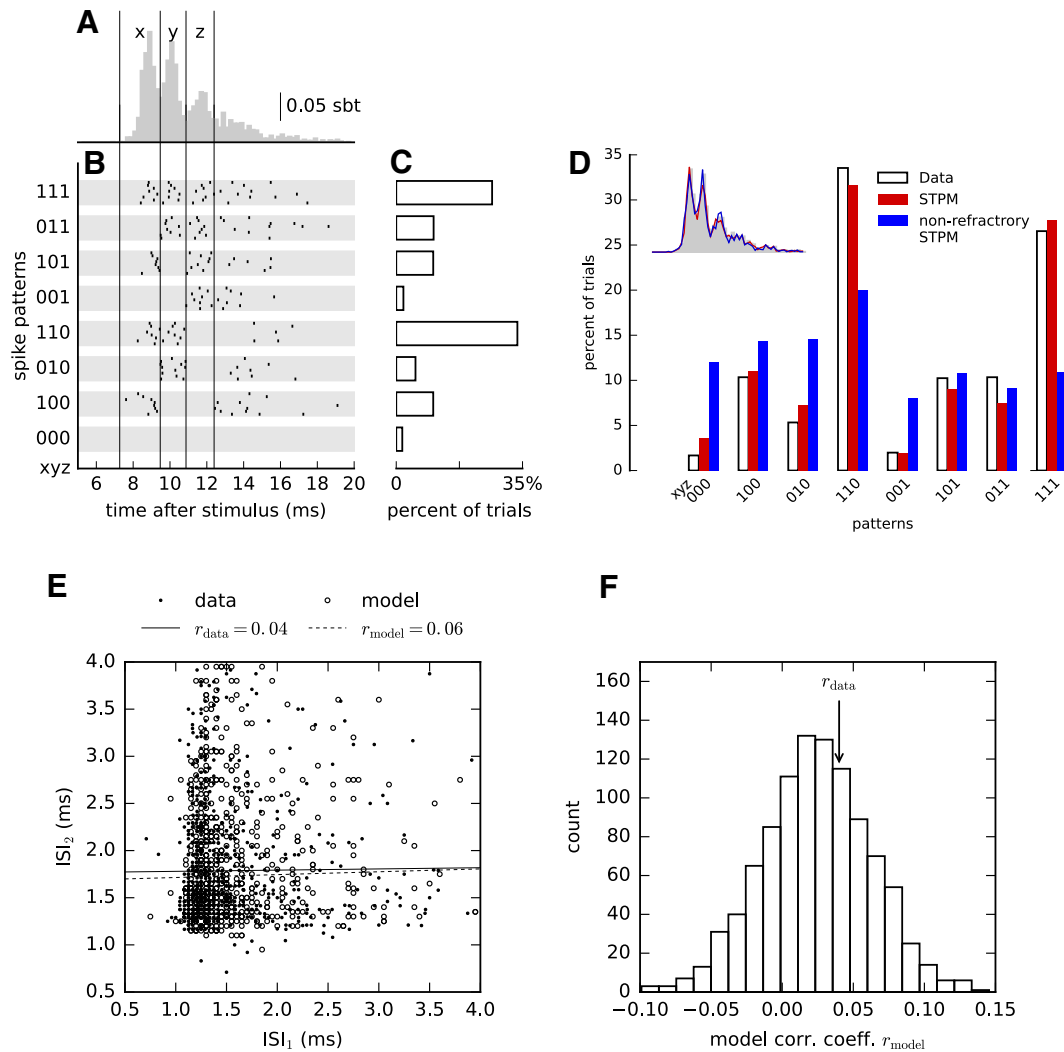
To further analyze the cases in which the simulated spike trains differed from the data, we subtracted the model PSTH from the validation data PSTH (Fig. 2B, bottom). The resulting residuals still contained fluctuations aligned to the peaks of the PSTH. This indicated that the model does not fully capture the shape of the PSTH. Indeed, the correlation coefficient between the residuals and the PSTH of the validation set was significantly positive (bootstrapped 95% confidence intervals; Fig. 2D) meaning that the residuals contain some remnants of the averaged neuron response. Altogether, these results show that the STPM model is sufficient for describing trial-averaged responses in the majority of recorded neurons.

### Poisson-like variability explains the occurrence of temporal spike patterns in repeated trials

Having shown that the interplay between the intensity and recovery functions of the STPM can account for a large part of the trial-averaged response of a single neuron, we tested whether the model can also explain the trial-to-trial variability of the spiking of cortical neurons.

To quantify the trial-to-trial variability of neuronal responses, we sorted single-trial spike trains according to the occurrence of spikes in predefined temporal windows





**Figure 3.** The STPM explains trial-to-trial variability of the data. **A**, Single-neuron responses averaged over all trials (PSTH, same as in Fig. 1B) reveal that spikes occur preferentially at discrete latencies (delimited by vertical lines and indexed by x for the first peak, y for the second peak, and z for the third peak). **B**, In single trials, multiple spikes are elicited in diverse combinations of preferred latencies resulting in significant trial-to-trial response variability. Spike combinations are classified into spike patterns. The time axis was first divided into three windows aligned to the peaks of the PSTH. Each trial was then assigned a binary string (spike pattern xyz, from 000 to 111), where 1 represents the occurrence and 0 the absence of a spike in a window. Spike timings of eight representative sample responses assigned to each pattern are shown as raster plots. **C**, Frequency at which the spike patterns occurred over repeated trials for the neuron in **A**. **D**, Firing pattern distribution obtained from the data (white bars, same as **C**), the STPM (red bars) and the nonrefractory STPM (blue bars). The firing rate of the Poisson model was estimated by a PSTH with bin size 0.05 ms. Inset compares the PSTHs obtained from each model (color-coded like the bars in main panel). **E**, Scatter plot of two consecutive ISIs within spike triplets calculated from the experimental data (filled circles) and responses simulated with STPM (empty circles). Serial correlations (Pearson’s correlation coefficient) found in the experimental intervals ( $r_{data}$ ) differ only slightly from the respective correlations predicted by the STPM ( $r_{model}$ , see values in the legend, solid and dashed lines represent the best linear fit to the experimental and model data, respectively). **F**, Repeated Monte-Carlo simulations ( $n = 1000$ ) of the STPM fitted to experimental data provide the distribution of serial correlations consistent with the STPM (empty bars); the serial correlations estimated directly from experimental data (vertical arrow,  $r_{data}$ ) are likely to be drawn from the same distribution (two-sided bootstrap test,  $p = 0.81$ ).

(Fig. 3A–C). Each spike train was assigned a binary word based on occupancy of preferred firing windows the borders of which were aligned to the troughs of the PSTH (Fig. 3A, windows labeled x, y, and z). As explained above, these troughs reflect the periods of quiescence due to the refractoriness of the neuron. When the single-trial spike trains were re-ordered according to the associated binary word, we could distinguish between several patterns of

activity (spike patterns). In most trials the neuron fired in all three windows (triplet, 111) or only the first two (doublet, 110), where the input was the strongest (compare with Fig. 2A), but also doublets with other combinations of spikes and silences were common (Fig. 3C, spike pattern frequency distribution). For example, the doublet 101 corresponds to trials in which the neuron fired at the onset of the stimulation (Fig. 3A, window x), then remained silent

during the second window ( $y$ ) and fired again in the third window ( $z$ ); the omission of the spike in the window  $y$  is the consequence firing late in the window  $x$  (see the corresponding line in the raster plot; Fig. 3B), so that the neuron is refractory during the window  $y$ . In other neurons the number of discrete firing windows (determined by the number of PSTH peaks) ranged from two to four, and a similar distribution of spike patterns was obtained. The appearance of such spike patterns can be attributed to the chance phenomena (Poisson firing) and their interplay with the structured input and refractoriness.

We found that the distribution of spike patterns in the experimental data were similar to the distribution obtained from the STPM (Fig. 3D). In contrast, when the recovery function was constrained to 1 for all bins and the intensity function estimated from the data (nonrefractory STPM) some spike patterns appeared at frequencies much different from the experimental data (e.g., spike patterns 010, 110, 001, and 111; Fig. 3D), despite the fact that the overall PSTHs were almost identical (Fig. 3D, inset). The differences of spike pattern frequencies can thus be understood as the effect of refractoriness; without it the probabilities of firing in each window are independent of the occurrence of spikes in the previous windows, in which case the frequency of a spike pattern can be directly predicted from the trial-averaged response (PSTH).

To quantify the similarity between the experimental and modeled spike patterns, we used a cross-validated  $\chi^2$  statistics (see Methods, Eq. 7). In 12 of 17 examined neurons the spike-pattern distribution of the STPM was similar to the experimental distribution, and for five cells they were significantly different ( $F$  test,  $p < 0.01$ ); in two of these five neurons the PSTH was not accurately predicted by the STPM precluding the possibility of predicting the trial-to-trial variations. In the remaining three neurons there were substantial differences in the frequency of selected spike patterns, which might reflect the misestimation of the recovery function. Overall, these results show that in most neurons the STPM with time-dependent inputs and refractoriness can account not only for the trial-averaged but also the trial-to-trial variability of responses to somatosensory stimulation.

### Within-burst intervals manifest significant correlations

Next, we investigated whether the correlations between consecutive ISIs (serial correlations) may play a role in the generation of spike patterns. The STPM predicts that the response should be fully determined by the current input and the interval since the last spike. However, the calculation of the serial correlations in the experimental data obtained from S1 showed that two consecutive ISIs are not independent (Fig. 3E). Since significant serial correlations might be induced by the firing-rate variations alone, we compared the experimental serial correlations with the ones obtained with the STPM, which does not assume any correlations between ISIs. In the example shown in Figure 3E the serial correlations are indeed accounted for by the STPM model meaning that the spiking history before the last spike does not affect the response.

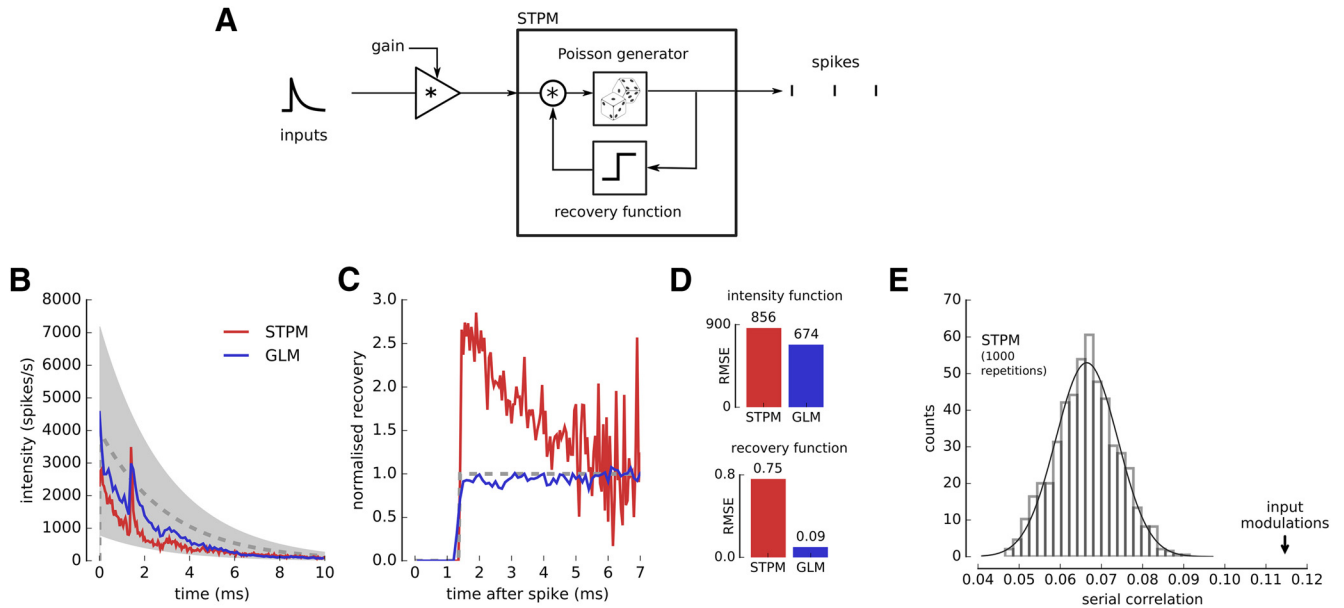
In 12 out of 17 neurons the experimental and model serial correlations were not significantly different (two-sided bootstrap test,  $p > 0.01$ ; Fig. 3F) confirming that for most neurons the spiking memory did not extend over the last spike. In three neurons the coefficient could not be determined because of a low number of triplets identified in responses. In two neurons the correlation coefficients were larger in the data than in the fitted STPM model (bootstrap test,  $p < 0.01$ ).

We also compared the STPM with a GLM (Fig. 2C), which can account for spiking history extending over the last spike. The GLM showed a similar power in explaining both the average PSTH compared to the STPM ( $t$  test,  $p < 0.01$ ; Fig. 2D, right box). However, it allowed for using larger bins without significant loss of goodness-of-fit (Fig. 2E,F). Finally, the introduction of spike history effects extending over multiple preceding spikes did not explain the significant serial correlations in every neuron. The GLM could account for the measured serial correlations in 13 out of 17 neurons. Overall, these results show that refractoriness is sufficient to explain the statistics in the within burst intervals obtained in most recorded neurons.

### Trial-to-trial input variations induce significant serial correlations

The significant serial correlations found in two neurons could result from variability of the inputs that they receive. Although the peripheral stimulation of the median nerve used to evoke the somatosensory responses was well controlled over the duration of the recording, it is possible that the effective input to the cortex was modulated at the early stages of somatosensory pathway (cuneate nucleus, thalamus) and by on-going activity in the cortex. On the other hand, the STPM was fitted under the assumption that the inputs and model parameters do no change in time, i.e., that they are stationary.

To test the effects of trial-to-trial variability on the estimated STPM parameters and the serial correlations, we simulated spike trains from the STPM with a step-like recovery function and an exponentially decaying intensity function (Fig. 4B,C, dashed lines). In addition, in each trial we modulated the amplitude of the intensity function by a multiplicative gain,  $G$ , which was randomly drawn from uniform distribution on the interval [0.2, 1.8] (Fig. 4A). Next, we fitted the simulated surrogate data with an STPM assuming that the intensity function was fixed and that the trial-to-trial variability resulted solely from the probabilistic nature of the model. The fitted intensity function (Fig. 4B, red line) reflected the rapid onset and slower decay of the input after the stimulus, but its trace deviated from the “ground-truth” intensity function used in the simulation (compare the solid red and dashed gray curves; Fig. 4B). Importantly, the intensity function contained small ripples akin to the ones visible in the intensity function fitted to experimental data (Fig. 2A, left). Similarly, the fitted recovery function did not capture the step-like transition from refractoriness to baseline, but it manifested a prominent overshoot following the absolute refractory period and slower decay to baseline (Fig. 4C);



**Figure 4.** Input modulation may explain deviations of spike train statistics from the STPM and GLM. **A**, The STPM was extended by including a multiplicative gain factor, which acts on the input function. The gain factor was randomly selected from a uniform distribution [0.2, 1.8] in each trial. The model was simulated with an exponentially decaying intensity function (**B**, dashed line); maximum amplitude, 4000 spikes/s, time constant, 3 ms; and a step recovery function (**C**, dashed line); refractory period, 1.4 ms. **B**, Intensity function of the STPM (red) and GLM (blue) fitted to the simulated spike trains. The intensity function manifests deviations from the real intensity function used in the simulation (dashed line; gray-shaded area corresponds to the amplitude range of intensity function taking into account the gain factor). **C**, Recovery function of the STPM (red) and GLM (blue) fitted to the simulated spike trains. The STPM-estimated recovery function displays a characteristic overshoot soon after end of the absolute refractory period (1.4 ms; dashed line, real recovery function underlying the spike trains). **D**, RMS error of the intensity and recovery functions estimated with the STPM and GLM. **E**, The serial correlation of the model with gain modulation (bar plot, histogram of 1000 serial correlation coefficient obtained from Monte Carlo simulations of the STPM with the intensity and recovery functions shown in **B**, **C**, red line).

such time-dependence was reminiscent of the shape of recovery function estimated from the data (Fig. 2A, right).

We also studied the effects of the gain modulation on the GLM. The intensity function estimated with this model still contained fluctuations absent in the function used for simulation, but their amplitude was reduced compared to the STPM. A greater improvement was observed in the GLM estimate of the recovery function, which approximated well the real function without a visible overshoot. Overall, both STPM and GLM misestimated some model parameters in presence of trial-to-trial variation, but we found that the GLM was more robust (Fig. 4D).

Finally, we estimated the serial correlation between the ISIs in presence of the input modulation. We found that the serial correlation was significantly larger compared to the spike trains simulated with the STPM with no trial-to-trial variations (Fig. 4E). This result shows that positive serial correlations can be obtained when neuronal responses vary from trial to trial reflecting changing inputs or excitability of the neuron. Since in our analysis in Figure 3E,F we compared experimental serial correlations to the ones obtained from the STPM, which does not account for the input variability, our estimate of serial correlations could reflect input modulation.

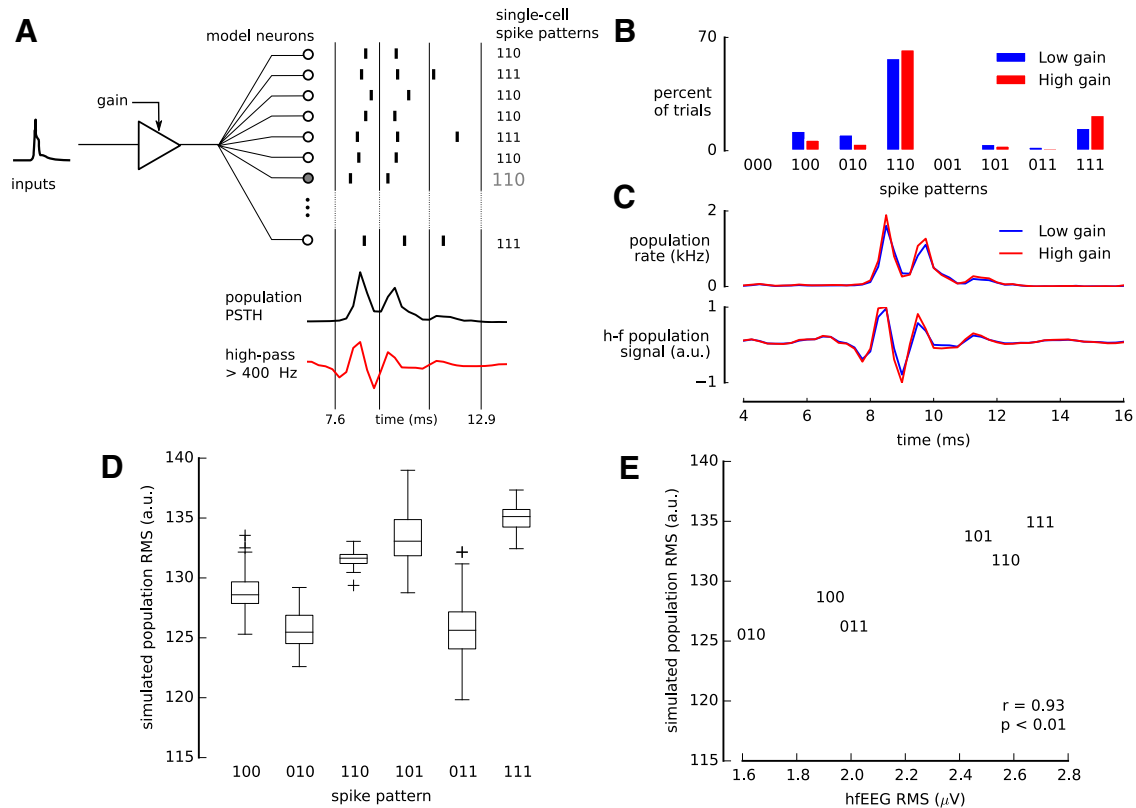
In summary, we show that the trial-to-trial variations of the input can explain several aspects of the STPM fitted to experimental data, in particular the ripples in the fitted

intensity functions, overshoot following the refractoriness in the recovery function, and significant correlations between consecutive ISIs.

### Trial-to-trial input variations induce correlations between single-neuron and population responses

Simultaneous recordings of single-neuron spike patterns and macroscopic EEG signals recorded from the surface of dura (high-frequency, >400 Hz, epidural hf-EEG) have shown that the spike patterns are not private to each neuron but that they are coordinated across a population of neurons responding to peripheral stimulation (Telenczuk et al., 2011). Such a coordination could possibly be achieved with a millisecond range-synchronization of the neurons, but the mechanisms of such a synchronization are not clear. Alternatively, it could be produced by the shared modulation of inputs or excitability. To test the latter hypothesis, we applied our probabilistic single-neuron model, the STPM, to a population of neurons receiving common gain modulation (Fig. 5A).

As before, we assumed that the gain varies from trial to trial due to fluctuations in excitability, synaptic strength, or background activity. To investigate the effect of the gain factor on the population response, we simulated 5000 identical, statistically independent model neurons with the parameters estimated from the experimental data. We found that the frequencies of individual spike patterns



**Figure 5.** Coordination of spike patterns in the population. **A**, Simulation of 5000 identical units described by the STPM (Fig. 2C) with gain modulation of the strength  $\gamma = 0.2$ . From the simulated spike trains of all neurons (short ticks represent sample spike times) the population PSTH was calculated (bottom, black line) and then high-pass filtered to obtain an estimate of the hf-EEG population response (bottom, red line). **B**, Distributions of spike patterns of a single neuron in 1000 repetitions of the simulation with a low (0.8, blue) and a high (1.2, red) gain. **C**, The population PSTH before (top panel) and after high-pass filtering (bottom panel) varies with the gain (blue: 0.8, red: 1.2). **D**, Single-neuron spike pattern and root-mean square (RMS) amplitude of the high-pass filtered population PSTH are correlated because both the spike pattern and the PSTH depend on the gain. Box plots represent distribution of single-trial RMS amplitudes for each spike pattern of a single neuron (boxes - quartiles, horizontal lines - medians, whiskers - range excluding outliers, crosses - outliers). **E**, The simulated population RMS amplitudes correlate with experimental hf-EEG RMS related to the same pattern (hf-EEG RMS; Telenczuk et al., 2011).

depended on the value of the gain factor: Some patterns (for example 100) occur more frequently at low gain ( $G = 0.8$ ), while others (for example 110) tend to occur more often at high gain ( $G = 1.2$ ; Fig. 5B). Concurrently, the amplitude of the binned spike trains averaged across neurons (population PSTH) increased with the gain (Fig. 5C).

The concurrent dependence of population PSTH and single-neuron spike pattern distribution on the gain factor may also explain the correlation between single-neuron responses and macroscopic population activity found in experimental data. Spike patterns that are more frequent at low gain coincide predominately with a low-amplitude population PSTH whereas spike patterns elicited more frequently at high input gain, on average, coincide more often with a high-amplitude population PSTH. Consequently, the amplitude of the population PSTH might co-vary with single-neuron spike patterns. In particular, we found that the RMS amplitude of the high-pass filtered PSTH ( $>400$  Hz) depends on the spike pattern used for grouping the trials (Fig. 5D).

To test whether gain modulation could explain the experimental results, we simulated the STPM model with

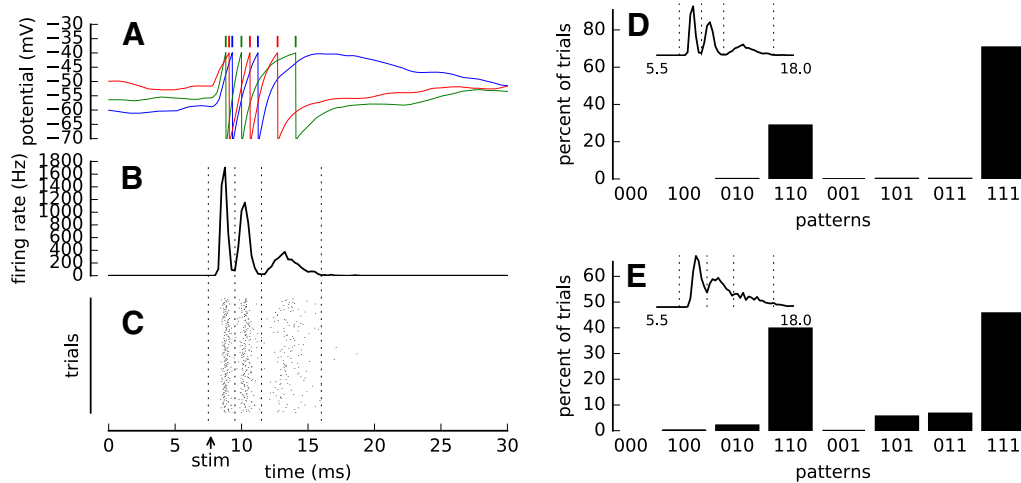
trial-varying gain factor (see Methods) and compared the spike-pattern-specific hf-EEG amplitude calculated from experimental data with the simulated population response. We found that already for a modest level of the gain modulation (modulation strength  $\gamma = 0.2$ ) the RMS amplitudes of the experimental hf-EEG and high-pass-filtered population PSTH of the model were strongly correlated (an example for one neuron, Pearson's  $r = 0.93$ ; Fig. 5E).

We found a positive correlation coefficient in 12 of 16 neurons that produced at least three different patterns. This fraction is significantly above the chance level expected from uncorrelated quantities (two-sided binomial test,  $p < 0.05$ ). Thus, we conclude that gain modulation can introduce correlations between the single-neuron spike patterns and macroscopic population responses.

### Spike patterns emerge as input-driven phenomena in a simplified biophysical model of a cortical neuron

The probabilistic models presented so far are abstract, and their parameters (intensity and recovery functions) cannot be linked directly to biophysical properties of a





**Figure 6.** A LIF model produces variable spike patterns. **A**, Sample traces of the membrane potential  $V_m(t)$  of a LIF model (see Methods for details) for three repetitions of the simulation. The ticks mark the threshold crossings, which lead to spike emission (color matched to the color of  $V_m$  trace). **B**, Poststimulus time histogram (firing rate) of spike trains obtained from 500 repetitions of the simulation. Vertical dashed lines delineate the events used for spike pattern analysis in **D**. **C**, Spike raster from all repetitions of the simulation. The “stim” arrow denotes the onset of the simulated thalamic inputs. **D**, Distribution of spike patterns obtained in the simulation of a LIF neuron (inset, PSTH). **E**, Distribution of spike patterns and PSTH (inset) for a model with modified parameters. Increasing the presynaptic firing rates of intracortical connections leads to higher coincidence of 101 and 011 patterns. In **A–D** the following parameters were used:  $w_{exc} = 0.0072 \mu s$ ,  $\tau_{exc} = 0.9$  ms,  $f_{exc} = 10$  Hz,  $w_{inh} = 0.02252 \mu s$ ,  $w_{Th} = 0.035 \mu s$ ,  $n_{Th} = 28$ ,  $f_{Th} = 700$  Hz,  $U = 0.65$ . **E**, Four parameters were modified from this baseline:  $f_{exc} = 30$  Hz,  $w_{Th} = 0.05 \mu s$ ,  $f_{Th} = 300$  Hz,  $U = 0.7$ . All definitions and values of the remaining parameters are listed in Table 1.

neuron. To interpret the generation of spike patterns mechanistically, we developed a simplified biophysical model of a cortical neuron based on the LIF model. Although this model does not reproduce faithfully all biological properties of realistic neurons, it captures their integration and spike generation properties, which are essential to the responses analyzed here. We simulated the neuron with two types of synaptic inputs, tonic excitatory and inhibitory inputs, and phasic thalamic excitatory inputs representing the barrage of action potentials triggered by peripheral stimulation.

In absence of thalamic inputs the model neuron elicits only few spikes due to spontaneous threshold crossings. However, in the model the median nerve stimulation is assumed to activate the thalamocortical fibers (28 synapses per cortical neuron), which then fire randomly according to a Poisson distribution with the rate of 700 spikes per second. These massive inputs trigger excitatory postsynaptic currents bringing the membrane quickly to the threshold. This results in a series of spike emissions accompanied by rapid successions of membrane de- and repolarizations (Fig. 6A).

We calculated the PSTH of the model by summing spike responses of  $n = 500$  repetitions of the simulation. In each repetition the intracortical excitatory and inhibitory inputs, as well as the thalamocortical inputs, were drawn randomly from the Poisson distribution. Despite this randomness, the model PSTH is composed of discrete peaks well separated by short valleys showing that the neuron fired precisely at preferred latencies (Fig. 6B). Although the LIF model does not contain an explicit refractoriness, the intervals between the PSTH peaks correspond to the time required to depolarize the membrane from the reset

potential ( $V_{reset} = -70$  mV) to the spiking threshold ( $V_{thr} = -40$  mV). In Figure 6A, this time is seen as the slow rise time following the rapid downstrokes (reset) of the membrane potential triggered by spikes. Such a hyperpolarized period acts effectively as the refractory period as seen in the STPM and GLM.

The characteristic decay of the response in the somatosensory cortex observed in the experimental data (Fig. 1B) could be driven by the adaptation of the neuron to the intense stimulation either at synaptic (Markram and Tsodyks, 1996) or neuronal level (Benda and Herz, 2003). Here, we model this process by means of short-term synaptic depression, which reflects the depression of thalamocortical synapses due to prolonged activity (Gil et al., 1997). The gradual decrease of synaptic drive makes the subsequent peaks smaller, broader, and separated by longer intervals (Fig. 6B) as observed also in the experimental PSTH (Fig. 1B). After 10 ms of stimulation, the thalamocortical synapses deplete, abolishing further discharges.

In practice, the inputs to somatosensory cortex can also decay after a brief median nerve stimulation (0.2 ms) applied to the median nerve invalidating our assumption of sustained synaptic drive. However, it has been found that the thalamocortical projections can respond with prolonged firing to brief presentation of the stimulus (Swadlow and Gusev, 2001). Interestingly, such responses also formed bursts of action potentials. If the axonal delays of multiple thalamocortical neurons are matched at the submillisecond level, such bursts could provide oscillatory inputs cortical level. The effects of such input patterns on the cortical responses should be investigated in the future.

The responses of the LIF model neuron vary from trial to trial (Fig. 6C,D). This variability results from random cortical and thalamocortical inputs, which provide Poisson-distributed input spikes. Increasing the rate of inhibitory and excitatory inputs in a balanced fashion puts the neuron in a so-called noise-driven regime in which spikes are evoked by the random fluctuations over the threshold rather than by the mean depolarization (Destexhe et al., 2003; Zerlaut et al., 2016). In this regime, the responses of the neuron are more variable such that a broader range of different spike patterns is obtained across the trials. In particular, we found that the patterns with long latencies (such as, 011) or spike omissions (101) became more frequent at higher intracortical firing rates (Fig. 6E).

In summary, the LIF model indicates that bursts in the somatosensory cortex can be driven by the input and do not always require intrinsic bursting mechanisms (reviewed by Krahe and Gabbiani, 2004). The number of spikes per burst and the within-burst intervals can be mechanistically explained by the integrating properties of single neurons that are equipped with an intrinsic adaptation process or driven by synapses that show short-term depression. Strong thalamic inputs can produce precise population responses at preferred latencies, which can overcome the variability. At the single-trial level the variability of the thalamic input is expressed in the form of stereotyped spike patterns.

## Discussion

By means of simplified phenomenological models and a biophysical point-neuron model, we showed that within-burst variability of cortical S1 neurons can be decomposed into the private variability of each neuron and multiplicative input modulation that is shared by the entire population. The private variability explains most of the differences between responses elicited in single trials and underlies the re-appearance of the same spike patterns over multiple repetitions of the stimulus. The shared gain modulation coordinates the responses of many responding neurons and explains the puzzling co-variability between single-neuron and macroscopic population responses demonstrated in experimental recordings (Telenczuk et al., 2011). The models shed also light on the mechanism of S1 burst generation, their synchronization across neurons, and suggest that spike patterns may encode time-varying cortical state at fast temporal scales.

## Mechanism of bursting

By means of a simple phenomenological model, the STPM, we showed that bursting in the S1 results from the combination of intense synaptic bombardment and a refractory period. Such fast bursting triggered and sustained by an intense synaptic input has been termed “forced bursting” (Izhikevich, 2006).

The shape of a fitted recovery function in both models agrees well with the contribution of an after-hyperpolarization (AHP)-mediated potassium current and an after-depolarization (ADP) due to either persistent (Bal and McCormick, 1996; Brumberg et al., 2000) sodium or low-threshold calcium current (Jahnsen and Llinás, 1984): The initial dip, which we interpret as refractoriness, might

reflect the AHP and the inactivation of sodium channels, whereas the subsequent over-shoot might correspond to the ADP. We note, however, that the over-shoot might be an artifact due to trial-to-trial variability (Fig. 4C). We also demonstrated in a toy model that the over-shoot is not critical for bursting responses, the absolute refractory period combined with intense but transient inputs is sufficient to produce bursts with similar (but not identical) statistics (Fig. 1C).

The STPM could also account for the correlations between ISIs (serial correlations). However, in a few neurons we found serial correlations differing from the ones it predicted. Since in these neurons processes occurring at long time scales could shape the spike patterns, we fitted them with the GLM, which considers spike-history effects extending to multiple ISIs. We found that the GLM with a horizon of 8 ms provided an optimal fit to these data in agreement with the time scales of short-term synaptic plasticity (Tsodyks and Markram, 1997) and firing-rate adaptation (Benda and Herz, 2003). The latter is often mediated by the slow AHP currents providing another link between a biophysical process and the recovery function of our phenomenological model.

The significant serial correlations could be also explained by a model which includes trial-to-trial variations of the input intensity (gain modulation). We found that introducing such variations in the model results in the over-estimation of the serial correlations estimated from the simulated data. In addition, these variations may lead to the over-estimation of the recovery function in form of the overshoot appearing briefly after the absolute refractory period. Although such an overshoot is also present in the recovery function estimated from the data, we believe that it is not an artifact of the estimation method. First, the modulation must be strong ( $\gamma = 0.8$ ) to produce a visible overshoot, whereas we found that modest modulation ( $\gamma = 0.2$ ) is consistent with the serial correlation and EEG correlation estimated in the data. Secondly, we found that GLM is robust with respect to such modulation introduced in the simulated model, but still it uncovers an overshoot in the experimental data. Nevertheless, in the future it would be instructive to extend the spike-train models (STPM and GLM) with the fluctuating gain factor and fit it directly to the data.

We were able to reproduce qualitatively both the average and single-trial features of the burst responses in a more realistic LIF neuron. Although such models are a gross simplification of the real neurons both in terms of spiking mechanism and morphologic features, it has been suggested that the LIF may faithfully reproduce some features of spike generation (Brette, 2015). In the model, the within-burst interval was controlled by the time required to reach the threshold from the hyperpolarized state (membrane time constant), and the gradual decay of the amplitude of PSTH peaks was due to the short-term synaptic depression. The latter mechanism can be related to the depletion of the available vesicles in the presynaptic terminal (Markram and Tsodyks, 1996). However, it would be possible to replace it with some other form of adaptation (Brette and Gerstner, 2005). Both mechanisms lead to

extinction of the initial synaptic drive, which explains the burst-like transient response to the step-like thalamic inputs. We note, however, that without recordings from thalamocortical projection neurons we cannot infer the inputs of the cortical neurons. Our models are still compatible with temporally structured inputs.

The trial-to-trial variability of the model was due to variable arrival times of the thalamic inputs, but also due to the intracortical inputs. The latter were configured such that the neuron was in the “high-conductance state” reproducing the property of cortical neurons receiving constant bombardment of inhibitory and excitatory inputs (Destexhe et al., 2003). Apart from decreasing the membrane time constant thus allowing for rapid repeated discharges, these intracortical inputs introduced substantial trial-to-trial variability that could explain the observed spike pattern distribution.

Previous studies have shown that most of the bursting neurons in the S1 macaque cortex are characterized by broad spikes, which suggests that they are pyramidal neurons or spiny stellate neurons (Baker et al., 2003). This is confirmed by intracellular recordings in barrel cortex showing that regular spiking neurons but not intrinsic bursting neurons followed the phase of high-frequency oscillations in surface recordings (Jones et al., 2000). Our results are consistent with these findings and strengthen the evidence that a subclass of S1 neurons activated by median nerve stimulation belongs to the regular spiking neurons. However, a subset of neurons analyzed here (5 of 17 neurons) did also fire bursts that were not locked to the median nerve stimulation showing that at least some of them may belong to the intrinsic bursting class.

### Burst synchronization

A striking feature of the S1 bursting is that the signature of the burst also appears in macroscopic signals such as the EEG. The visibility of the burst in the surface recordings was interpreted as a sign of strong synchronization between the neurons (Jones et al., 2000), which could be mediated, for example, by fast synaptic potentials or gap junctions (Draguhn et al., 1998). By extending our model to a population of uncoupled neurons, we demonstrated that the sub-millisecond synchronization between multiple neurons does not require a fast coupling mechanisms, but results from shared synaptic inputs arriving through thalamocortical fibers. Provided that the biophysical properties of the receiving population and axonal conduction times vary in a narrow range, these inputs will elicit synchronous bursts of spikes. The required precision in the arrivals of afferent spikes could be achieved by means of a plasticity rule that selects inputs arriving synchronously at the cortical synapses (Gerstner et al., 1996).

### Role of spike patterns

Trial-to-trial variations in S1 responses can be classified into a set of spike patterns defined by the occurrences of spikes within 10-ms-long bursts (Telenczuk et al., 2011). Such temporal patterns of neuronal responses were first identified in cat striate cortex and crayfish claw (Dayhoff and Gerstein, 1983), and later in the temporal cortex of monkeys, cat lateral geniculate nucleus (Fellous et al.,

2004) and in the rat hippocampus (Diba and Buzsáki, 2007; Schmidt et al., 2009).

Here, we proposed a model in which the occurrence of spike patterns is regulated by the input intensity, that is the rate of incoming spikes; in contrast precise timing of the input was not necessary. The temporal information stored in the spike patterns is complementary to the output rate (spike count) in the sense that the spike patterns with identical number of spikes (and therefore the same output rate) could still provide extra information concerning its inputs. For example, the early (110) doublet is more common for high input intensity; the opposite is true for the late (011) doublet (Fig. 5B). This mechanism could be especially useful for encoding inputs that would normally exceed the maximum firing rate set by the refractory period.

In one study the stimulus intensity was related to the within-burst intervals of spike responses recorded in the dorsal lateral geniculate nucleus (Funke and Kerscher, 2000). Our results are consistent with this hypothesis. In the STPM, the within-burst intervals are constrained by the refractory period, but their length can also vary as a function of the synaptic drive (intensity function). In addition, the length of refractory period may not be fixed but it might be modulated by the firing rate. It has been shown that models allowing for this modulation may better describe the spike times in response to the time-varying stimulation (Koyama and Kass, 2008).

Short trains of spikes are also well suited to evoke specific synaptic response or trigger synaptic plasticity (Lisman, 1997; Tsodyks and Markram, 1997; Maass and Zador, 1999; Song et al., 2000; Swadlow and Gusev, 2001), they are optimally placed to represent neuronal variables in a form that is easily processed, stored and transmitted (Leibold et al., 2008; Tiesinga et al., 2008). In this spike-timing-based view, neural systems take advantage of the temporal information encoded into spike patterns to represent slowly-changing cortical states (such as attention or waking). Alternatively, spike patterns could also allow for more reliable representation of neuronal inputs (Toups et al., 2012). These rate-based and spike-timing-based interpretations of spike patterns are not contradictory and could even act as independent communication channels (Tiesinga et al., 2008).

We showed that the distribution of spike patterns over neurons and the amplitude of the averaged population signal are regulated by input magnitude, which could reflect gating of neuronal signals through attention, expectation, sleep and waking (Steriade et al., 2001; Shu et al., 2003; Fontanini and Katz, 2008). Similar gain control mechanisms were implemented in realistic neural models through, for example, concurrent modulation of excitation and inhibition (Hô and Destexhe, 2000; Chance et al., 2002; Vogels and Abbott, 2009) or short-term synaptic depression (Rothman et al., 2009). More generally, multiplicative noise can account for the variability and co-variability of neuronal responses in the thalamus and many cortical areas, including the lateral geniculate nucleus, V1, V2, and MT (Goris et al., 2014).



## Population correlates of spike patterns

Macroscopic signatures of the bursts were shown to match the somatosensory-evoked potentials in monkey epidural EEG and human scalp EEG, so the high-frequency EEG burst might link the noninvasive macroscopic recordings and microscopic neuronal activity (Curio, 2000; Telenczuk et al., 2011). We could reproduce this puzzling relation between the single-neuron spike patterns and the macroscopic EEG signals by means of the STPM with the gain modulation. To model the high-frequency EEG signals, we used the high-pass filtered average response of the population (population PSTH). This choice was motivated by previous studies on the origins of the high-frequency EEG signals: while the low-frequency field potentials are known to correlate mostly with the synaptic currents (Buzsáki et al., 2012; Mazzoni et al., 2015), it has been recently demonstrated that the population spike rate is a better predictor of high-frequency >400-Hz EEG power (Teleńczuk et al., 2011; Teleńczuk et al., 2015). Based on these results we conclude that the link between the microscopic and macroscopic activity could be partially explained by the neuronal correlations mediated by the common gain modulation.

To sum up, our modeling shows how the characteristic features of the spike burst, i.e., its frequency and amplitude, can be related to the biophysical properties of neurons, such as refractory period and short-term synaptic depression, whereas the internal burst composition is controlled by the background activity and gain modulation. As a conclusion we argue that the brain could use small within-burst timing differences to encode the dynamical cortical state into precise spike patterns amenable to neuronal processing.

## References

- Baker S, Curio G, Lemon R (2003) EEG oscillations at 600 Hz are macroscopic markers for cortical spike bursts. *J Physiol* 550:529–534. [CrossRef](#)
- Bal T, McCormick DA (1996) What stops synchronized thalamocortical oscillations? *Neuron* 17:297–308. [CrossRef](#)
- Barlow RJ (1989). *Statistics: a guide to the use of statistical methods in the physical sciences*. Chichester: Wiley-Blackwell.
- Benda J, Herz AVM (2003) A universal model for spike-frequency adaptation. *Neural Comput* 15:2523–2564. [CrossRef](#) [Medline](#)
- Berry M, Meister M (1998) Refractoriness and neural precision. *J Neurosci* 18:2200. [Medline](#)
- Brette R (2015) What is the most realistic single-compartment model of spike initiation? *PLoS Comput Biol* 11:1–13. [CrossRef](#)
- Brette R, Gerstner W (2005) Adaptive exponential integrate-and-fire model as an effective description of neuronal activity. *J Neurophysiol* 94:3637–3642. [CrossRef](#)
- Brody CD (1999) Correlations without synchrony. *Neural Comput* 11:1537–1551. [Medline](#)
- Brown EN, Barbieri R, Ventura V, Kass RE, Frank LM (2002) The time-rescaling theorem and its application to neural spike train data analysis. *Neural Comput* 14:325–346. [CrossRef](#) [Medline](#)
- Brumberg JC, Nowak LG, McCormick DA (2000) Ionic mechanisms underlying repetitive high-frequency burst firing in supragranular cortical neurons. *J Neurosci* 20:4829–4843.
- Bruno RM, Sakmann B (2006) Cortex is driven by weak but synchronously active thalamocortical synapses. *Science* 312:1622–1627. [CrossRef](#)
- Buzsáki G, Anastassiou CA, Koch C (2012) The origin of extracellular fields and currents—EEG, ECoG, LFP and spikes. *Nat Rev Neurosci* 13:407–420. [CrossRef](#) [Medline](#)
- Chance F, Abbott L, Reyes A (2002) Gain modulation from background synaptic input. *Neuron* 35:773–782. [Medline](#)
- Chow CC, White JA (1996) Spontaneous action potentials due to channel fluctuations. *Biophys J* 71:3013–3021. [CrossRef](#)
- Cruikshank SJ, Lewis TJ, Connors BW (2007) Synaptic basis for intense thalamocortical activation of feedforward inhibitory cells in neocortex. *Nat Neurosci* 10:462–468.
- Curio G (2000) Linking 600-Hz “spike-like” EEG/MEG wavelets (“sigma-bursts”) to cellular substrates: concepts and caveats. *J Clin Neurophysiol* 17:377–396. [Medline](#)
- Czanner G, Sarma SV, Ba D, Eden UT, Wu W, Eskandar E, Lim HH, Temereanca S, Suzuki WA, Brown EN (2015) Measuring the signal-to-noise ratio of a neuron. *Proc Natl Acad Sci USA* 112:7141–7146. [CrossRef](#)
- Dayan P, Abbott L (2001). *Theoretical neuroscience: computational and mathematical modeling of neural systems*. Cambridge: MIT Press.
- Dayhoff JE, Gerstein GL (1983) Favored patterns in spike trains. I. Detection. *J Neurophysiol* 49:1334–1348.
- Destexhe A, Rudolph M, Fellous JM, Sejnowski TJ (2001) Fluctuating synaptic conductances recreate in vivo-like activity in neocortical neurons. *Neuroscience* 107:13–24. [CrossRef](#)
- Destexhe A, Rudolph M, Paré D (2003) The high-conductance state of neocortical neurons in vivo. *Nat Rev Neurosci* 4:739–751. [CrossRef](#) [Medline](#)
- Diba K, Buzsáki G (2007) Forward and reverse hippocampal place-cell sequences during ripples. *Nat Neurosci* 10:1241–1242. [CrossRef](#) [Medline](#)
- Douglas RJ, Martin KAC (2007) Mapping the matrix: the ways of neocortex. *Neuron* 56:226–238. [CrossRef](#) [Medline](#)
- Draguhn A, Traub RD, Schmitz D, Jefferys JGR (1998) Electrical coupling underlies high-frequency oscillations in the hippocampus in vitro. *Nature* 394:189–192. [CrossRef](#) [Medline](#)
- Ecker AS, Berens P, Cotton RJ, Subramaniyan M, Denfield GH, Cadwell CR, Smirnakis SM, Bethge M, Tolias AS (2014) State dependence of noise correlations in macaque primary visual cortex. *Neuron* 82:235–248. [CrossRef](#)
- Eckhorn R, Thomas U (1993) A new method for the insertion of multiple microprobes into neural and muscular tissue, including fiber electrodes, fine wires, needles and microsensors. *J Neurosci Methods* 49:175–179. [CrossRef](#)
- Estebanez L, Boustani SE, Destexhe A, Shulz DE (2012) Correlated input reveals coexisting coding schemes in a sensory cortex. *Nat Neurosci* 15:1691–1699. [CrossRef](#) [Medline](#)
- Evarts EV (1964) Temporal patterns of discharge of pyramidal tract neurons during sleep and waking in the monkey. *J Neurophysiol* 27:152–171.
- Faisal AA, Selen LPJ, Wolpert DM (2008) Noise in the nervous system. *Nat Rev Neurosci* 9:292–303. [CrossRef](#) [Medline](#)
- Fellous J-M, Tiesinga P, Thomas P, Sejnowski T (2004) Discovering spike patterns in neuronal responses. *J Neurosci* 24:2989–3001. [CrossRef](#) [Medline](#)
- Fontanini A, Katz DB (2008) Behavioral states, network states, and sensory response variability. *J Neurophysiol* 100:1160–1168. [CrossRef](#) [Medline](#)
- Funke K, Kerscher N (2000) High-frequency (300–800 Hz) components in cat geniculate (dLGN) early visual responses. *J Physiol* 94:411–425. [Medline](#)
- Gerstner W, Kempter R, van Hemmen JL, Wagner H (1996) A neuronal learning rule for sub-millisecond temporal coding. *Nature* 383:76–78. [CrossRef](#) [Medline](#)
- Gil Z, Connors B, Amitai Y (1997) Differential regulation of neocortical synapses by neuromodulators and activity. *Neuron* 19:679–686. [Medline](#)
- Gil Z, Connors B, Amitai Y (1999) Efficacy of thalamocortical and intracortical synaptic connections: quanta, innervation, and reliability. *Neuron* 23:385–397. [Medline](#)



- Goris RLT, Movshon JA, Simoncelli EP (2014) Partitioning neuronal variability. *Nat Neurosci* 17:858–865. [CrossRef](#) [Medline](#)
- Gray PR (1967) Conditional probability analyses of the spike activity of single neurons. *Biophys J* 7:759–777. [CrossRef](#)
- Hanajima R, Chen R, Ashby P, Lozano AM, Hutchison WD, Davis KD, Dostrovsky JO (2004) Very fast oscillations evoked by median nerve stimulation in the human thalamus and subthalamic nucleus. *J Neurophysiol* 92:3171–3182. [CrossRef](#)
- Hazan L, Zugaro M, Buzsáki G (2006) Klusters, NeuroScope, NDManager: a free software suite for neurophysiological data processing and visualization. *J Neurosci Methods* 155:207–216. [CrossRef](#)
- Hô N, Destexhe A (2000) Synaptic background activity enhances the responsiveness of neocortical pyramidal neurons. *J Neurophysiol* 84:1488–1496.
- Izhikevich E (2006) Bursting. *Scholarpedia* 1:1300. [CrossRef](#)
- Jahnsen H, Llinás R (1984) Electrophysiological properties of guinea-pig thalamic neurones: an in vitro study. *J Physiol* 349:205–226. [Medline](#)
- Johnson DH, Swami A (1983) The transmission of signals by auditory-nerve fiber discharge patterns. *J Acoust Soc Am* 74:493–501. [Medline](#)
- Johnston D, Wu S (1995). *Foundations of cellular neurophysiology*. Cambridge: MIT Press.
- Jones M, MacDonald K, Choi B, Dudek F, Barth D (2000) Intracellular correlates of fast (>200 Hz) electrical oscillations in rat somatosensory cortex. *J Neurophysiol* 84:1505–1518.
- Kara P, Reinagel P, Reid RC (2000) Low response variability in simultaneously recorded retinal, thalamic, and cortical neurons. *Neuron* 27:635–646. [CrossRef](#)
- Koyama S, Kass R (2008) Spike train probability models for stimulus-driven leaky integrate-and-fire neurons. *Neural Comput* 20:1776–1795. [CrossRef](#)
- Krahe R, Gabbiani F (2004) Burst firing in sensory systems. *Nat Rev Neurosci* 5:13–23. [CrossRef](#) [Medline](#)
- Leibold C, Gundlfinger A, Schmidt R, Thurley K, Schmitz D, Kempter R (2008) Temporal compression mediated by short-term synaptic plasticity. *Proc Natl Acad Sci USA* 105:4417–4422. [CrossRef](#)
- Lewicki MS (1998) A review of methods for spike sorting: the detection and classification of neural action potentials. *Network* 9:53. [CrossRef](#)
- Lisman J (1997) Bursts as a unit of neural information: making unreliable synapses reliable. *Trends Neurosci* 20:38–43. [CrossRef](#)
- Llinás R, Jahnsen H (1982) Electrophysiology of mammalian thalamic neurones in vitro. *Nature* 297:406–408. [Medline](#)
- Maass W, Zador AM (1999) Dynamic stochastic synapses as computational units. *Neural Comput* 11:903–917. [Medline](#)
- Markram H, Tsodyks M (1996) Redistribution of synaptic efficacy between neocortical pyramidal neurons. *Nature* 382:807–810. [CrossRef](#)
- Mazzoni A, Linddè H, Cuntz H, Lansner A, Panzeri S, Einevoll GT (2015) Computing the local field potential (LFP) from integrate-and-fire network models. *PLoS Comput Biol* 11:e1004584. [CrossRef](#)
- Miller MI (1985) Algorithms for removing recovery-related distortion from auditory-nerve discharge patterns. *J Acoust Soc Am* 77:1452–1464. [Medline](#)
- Panzeri S, Petersen RS, Schultz SR, Lebedev M, Diamond ME (2001) The role of spike timing in the coding of stimulus location in rat somatosensory cortex. *Neuron* 29:769–777. [CrossRef](#)
- Rauch A, Camera GL, Luscher H, Senn W, Fusi S (2003) Neocortical pyramidal cells respond as integrate-and-fire neurons to in vivo-like input currents. *J Neurophysiol* 90:1598–1612. [CrossRef](#) [Medline](#)
- Rothman JS, Cathala L, Steuber V, Silver RA (2009) Synaptic depression enables neuronal gain control. *Nature* 457:1015–1018. [CrossRef](#) [Medline](#)
- Schmidt R, Diba K, Leibold C, Schmitz D, Buzsáki G, Kempter R (2009) Single-trial phase precession in the hippocampus. *J Neurosci* 29:13232–13241. [CrossRef](#) [Medline](#)
- Schneidman E, Freedman B, Segev I (1998) Ion channel stochasticity may be critical in determining the reliability and precision of spike timing. *Neural Comput* 10:1679–1703. [CrossRef](#)
- Shadlen M, Newsome W (1998) The variable discharge of cortical neurons: implications for connectivity, computation, and information coding. *J Neurosci* 18:3870–3896. [Medline](#)
- Shu Y, Hasenstaub A, McCormick D (2003) Turning on and off recurrent balanced cortical activity. *Nature* 423:288–293. [CrossRef](#) [Medline](#)
- Softky WR, Koch C (1993) The highly irregular firing of cortical cells is inconsistent with temporal integration of random EPSPs. *J Neurosci* 13:334–350.
- Song S, Miller KD, Abbott LF (2000) Competitive Hebbian learning through spike-timing-dependent synaptic plasticity. *Nat Neurosci* 3:919–926.
- Steriade M, Timofeev I, Grenier F (2001) Natural waking and sleep states: a view from inside neocortical neurons. *J Neurophysiol* 85:1969–1985. [Medline](#)
- Stern P, Edwards FA, Sakmann B (1992) Fast and slow components of unitary EPSCs on stellate cells elicited by focal stimulation in slices of rat visual cortex. *J Physiol* 449:247–278. [CrossRef](#)
- Swadlow HA, Gusev AG (2001) The impact of 'bursting' thalamic impulses at a neocortical synapse. *Nat Neurosci* 4:402–408. [CrossRef](#)
- Telenczuk B, Baker SN, Herz AV, Curio G (2011) High-frequency EEG co-varies with spike burst patterns detected in cortical neurons. *J Neurophysiol* 105:2951–2959. [CrossRef](#)
- Teleńczuk B, Baker SN, Kempter R, Curio G (2015) Correlates of a single cortical action potential in the epidural EEG. *Neuroimage* 109:357–367. [CrossRef](#) [Medline](#)
- Tiesinga P, Fellous J, Sejnowski TJ (2008) Regulation of spike timing in visual cortical circuits. *Nat Rev Neurosci* 9:97–107. [CrossRef](#) [Medline](#)
- Toups JV, Fellous J-M, Thomas PJ, Sejnowski TJ, Tiesinga PH (2012) Multiple spike time patterns occur at bifurcation points of membrane potential dynamics. *PLoS Comput Biol* 8:e1002615. [CrossRef](#)
- Truccolo W, Eden UT, Fellous MR, Donoghue JP, Brown EN (2005) A point process framework for relating neural spiking activity to spiking history, neural ensemble, and extrinsic covariate effects. *J Neurophysiol* 93:1074–1089.
- Tsodyks M, Markram H (1997) The neural code between neocortical pyramidal neurons depends on neurotransmitter release probability. *Proc Natl Acad Sci USA* 94:719–723. [CrossRef](#)
- van Vreeswijk C, Sompolinsky H (1996) Chaos in neuronal networks with balanced excitatory and inhibitory activity. *Science* 274:1724–1726. [CrossRef](#)
- Vogels TP, Abbott LF (2009) Gating multiple signals through detailed balance of excitation and inhibition in spiking networks. *Nat Neurosci* 12:483–491. [CrossRef](#)
- Witham CL, Baker SN (2015) Information theoretic analysis of proprioceptive encoding during finger flexion in the monkey sensorimotor system. *J Neurophysiol* 113:295–306. [CrossRef](#)
- Zerlaut Y, Teleńczuk B, Deleuze C, Bal T, Ouanounou G, Destexhe A (2016) Heterogeneous firing rate response of mouse layer V pyramidal neurons in the fluctuation-driven regime. *J Physiol* 594:3791–3808. [CrossRef](#) [Medline](#)